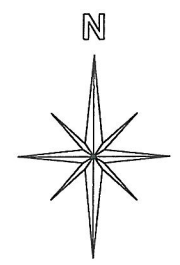


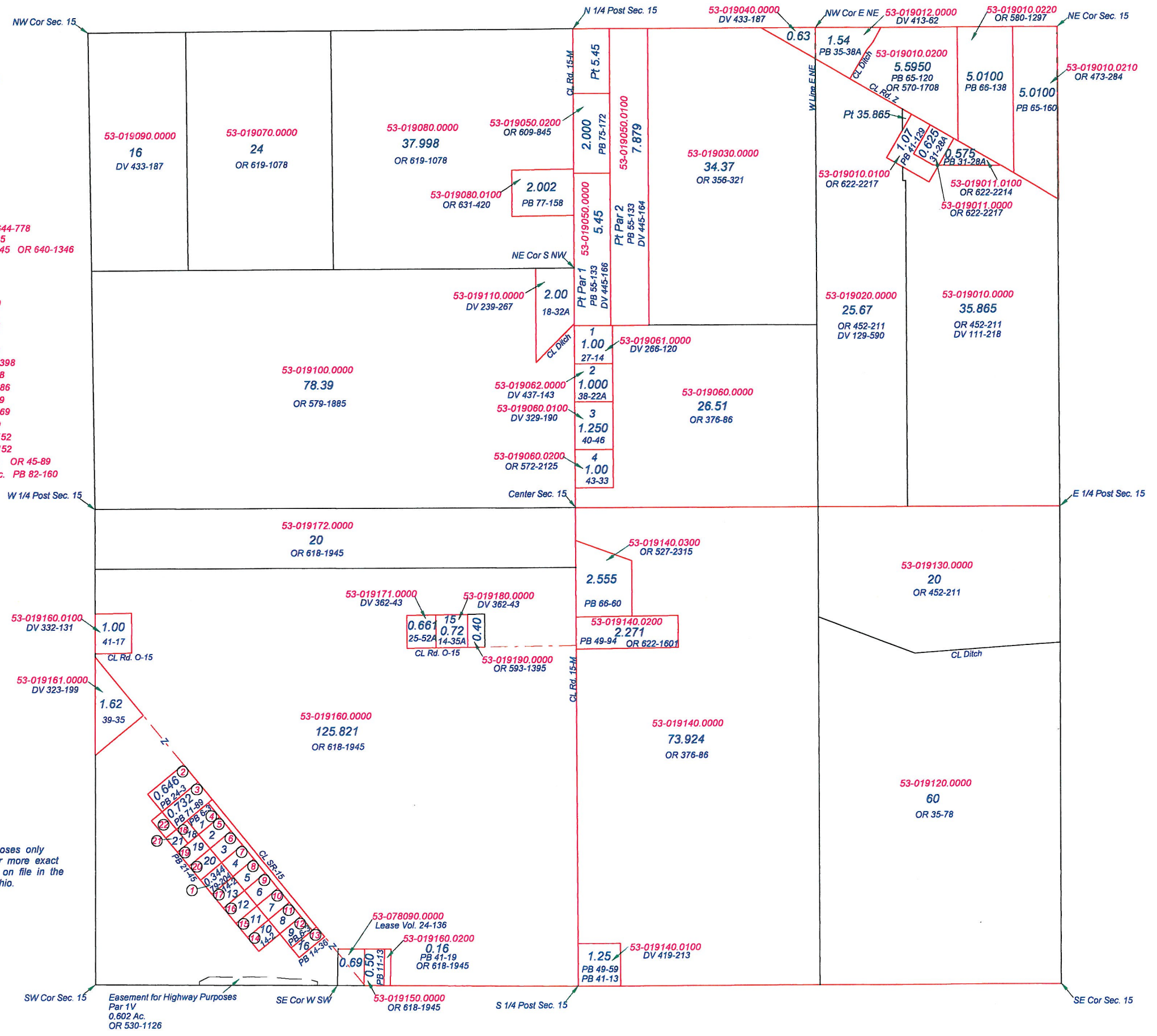
UNION TOWNSHIP
T 1 S R 6 E
SECTION 15

- ① 53-019160.0300 0.344 Ac. PB 79-204 OR 644-778
- ② 53-019170.0000 0.646 Ac. PB 24-3 DV 269-85
- ③ 53-019200.0000 0.732 Ac. PB 71-89 PB 21-45 OR 640-1346
- ④ 53-020010.0000 Lot 1 PB 6-3 OR 45-89
- ⑤ 53-020020.0000 Lot 2 PB 6-3 OR 101-152
- ⑥ 53-020030.0000 Lot 3 PB 6-3 OR 101-152
- ⑦ 53-020040.0000 Lot 4 PB 6-3 OR 644-778
- ⑧ 53-020050.0000 Lot 5 PB 6-3 OR 544-2069
- ⑨ 53-020060.0000 Lot 6 PB 6-3 OR 644-749
- ⑩ 53-020070.0000 Lot 7 PB 6-3 OR 649-1786
- ⑪ 53-020080.0000 Lot 8 PB 6-3 OR 644-378
- ⑫ 53-020090.0000 Lot 9 PB 6-3 OR 614-2398
- ⑬ 53-020090.0000 Lot 16 PB 14-36 OR 614-2398
- ⑭ 53-020100.0000 Lot 10 PB 14-2 OR 644-378
- ⑮ 53-020110.0000 Lot 11 PB 14-2 OR 649-1786
- ⑯ 53-020120.0000 Lot 12 PB 14-2 OR 644-749
- ⑰ 53-020130.0000 Lot 13 PB 14-2 OR 544-2069
- ⑱ 53-020160.0000 Par 18 PB 21-45 OR 45-89
- ⑲ 53-020170.0000 Par 19 PB 21-45 OR 101-152
- ⑳ 53-020180.0000 Par 20 PB 21-45 OR 101-152
- ㉑ 53-020181.0000 Lot 21 0.17 Ac. PB 39-55A OR 45-89
- ㉒ 53-019160.0400 PT SW 1/4 Sec 15 0.215 Ac. PB 82-160



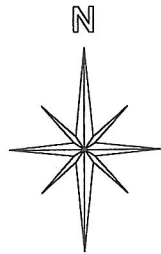
This is a worksheet and is for location purposes only and cannot be guaranteed for accuracy. For more exact information, please CHECK deeds and plats on file in the Putnam County Recorders Office, Ottawa, Ohio.

Revised 2014



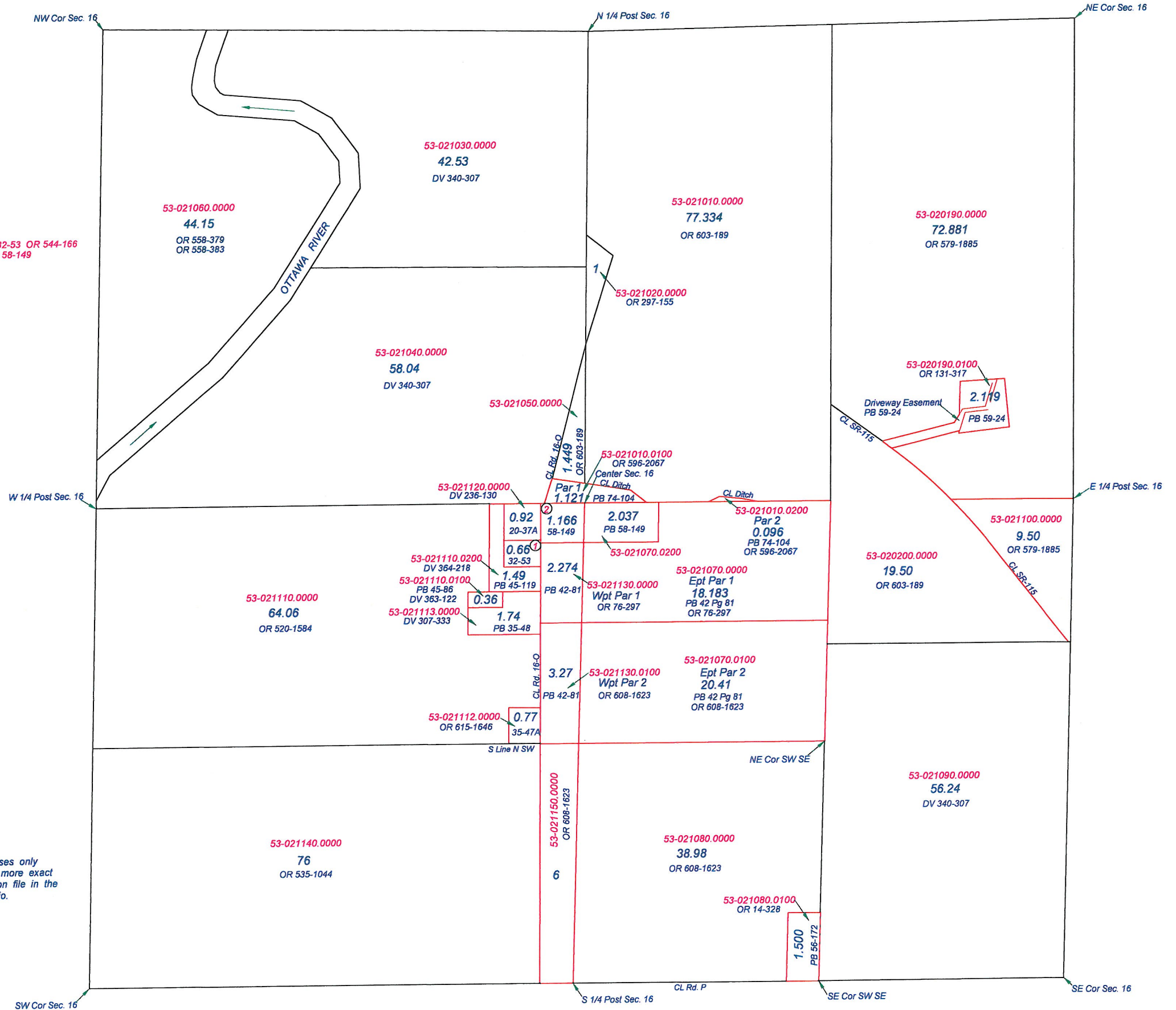
UNION TOWNSHIP
T1S R6E
SECTION 16

- ① 53-021111.0000 0.66 Ac. PB 32-53 OR 544-166
- ② 53-021130.0200 1.166 Ac. PB 58-149



This is a worksheet and is for location purposes only and cannot be guaranteed for accuracy. For more exact information, please CHECK deeds and plats on file in the Putnam County Recorders Office, Ottawa, Ohio.

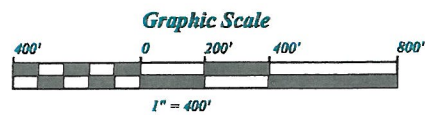
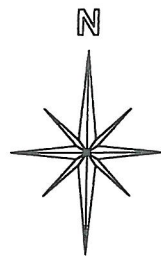
Revised 2013



UNION TOWNSHIP

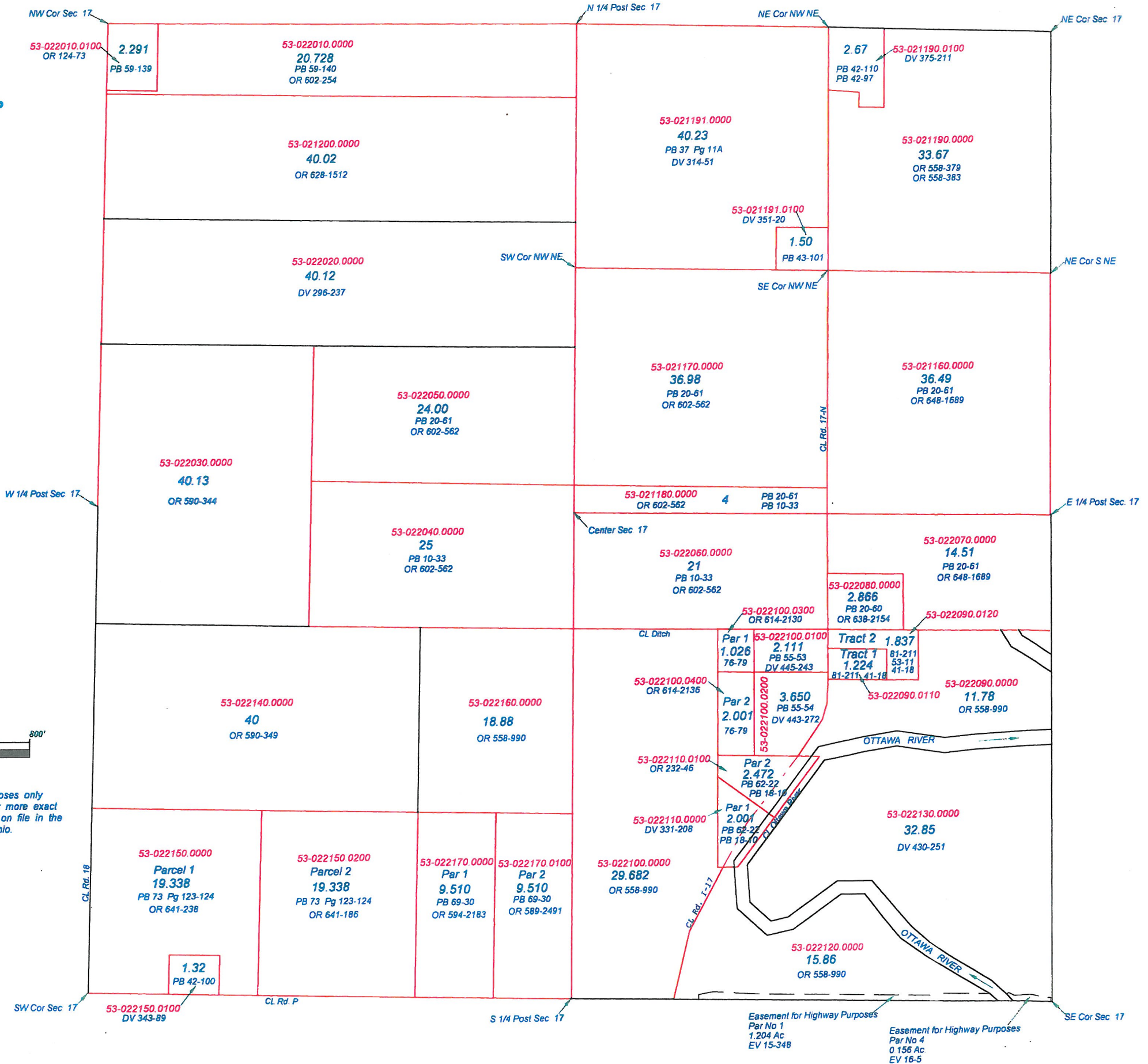
T1S R6E

SECTION 17

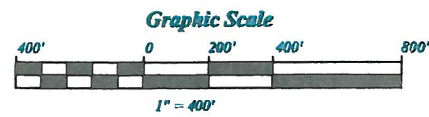
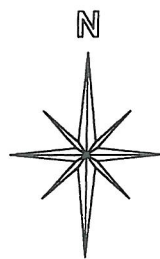


This is a worksheet and is for location purposes only and cannot be guaranteed for accuracy. For more exact information, please CHECK deeds and plats on file in the Putnam County Recorders Office, Ottawa, Ohio.

Revised 2014

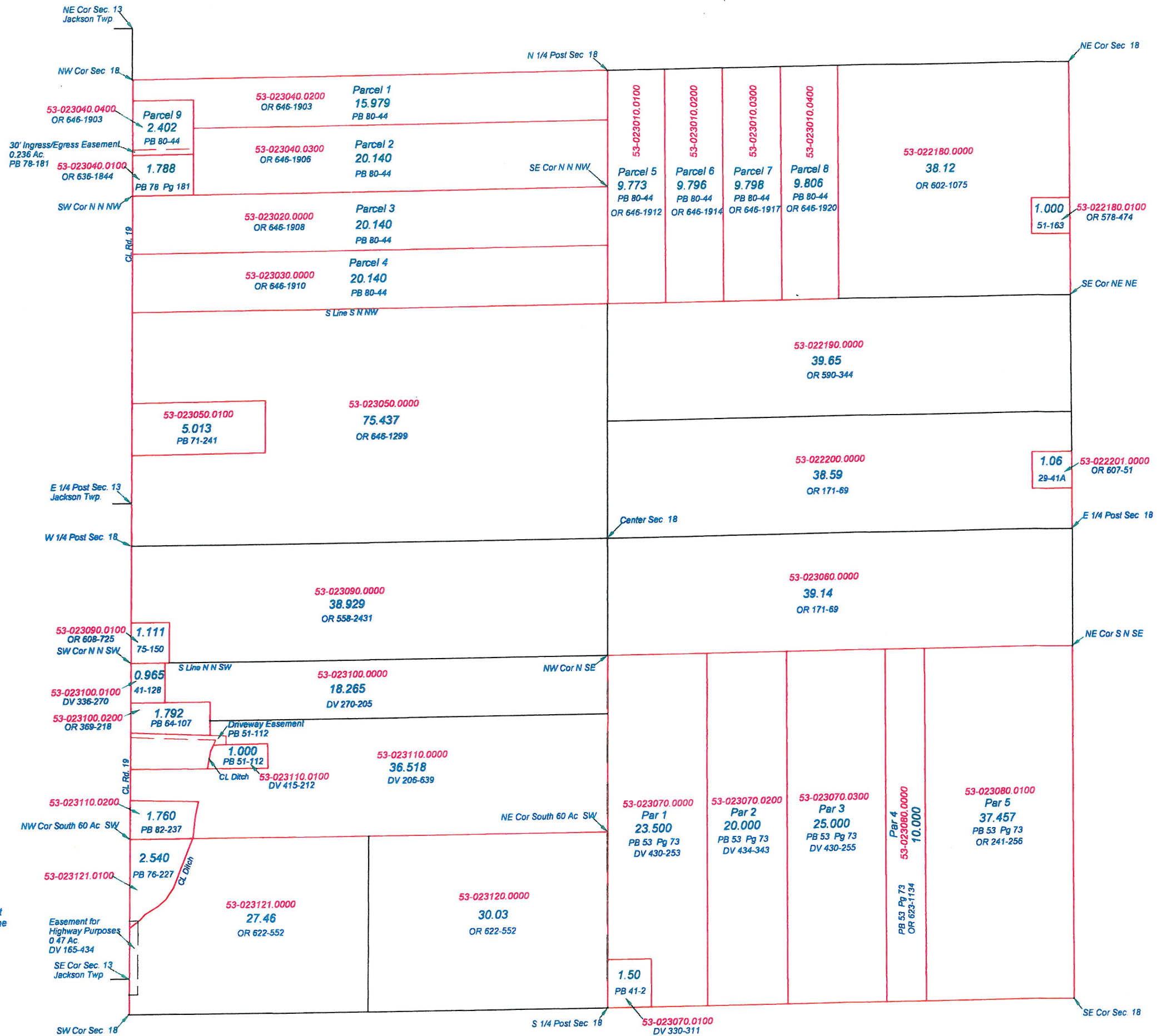


UNION TOWNSHIP
T1S R6E
SECTION 18

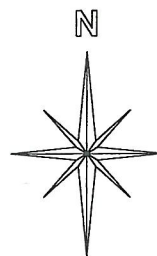


This is a worksheet and is for location purposes only and cannot be guaranteed for accuracy. For more exact information, please CHECK deeds and plats on file in the Putnam County Recorders Office, Ottawa, Ohio.

Revised 2015

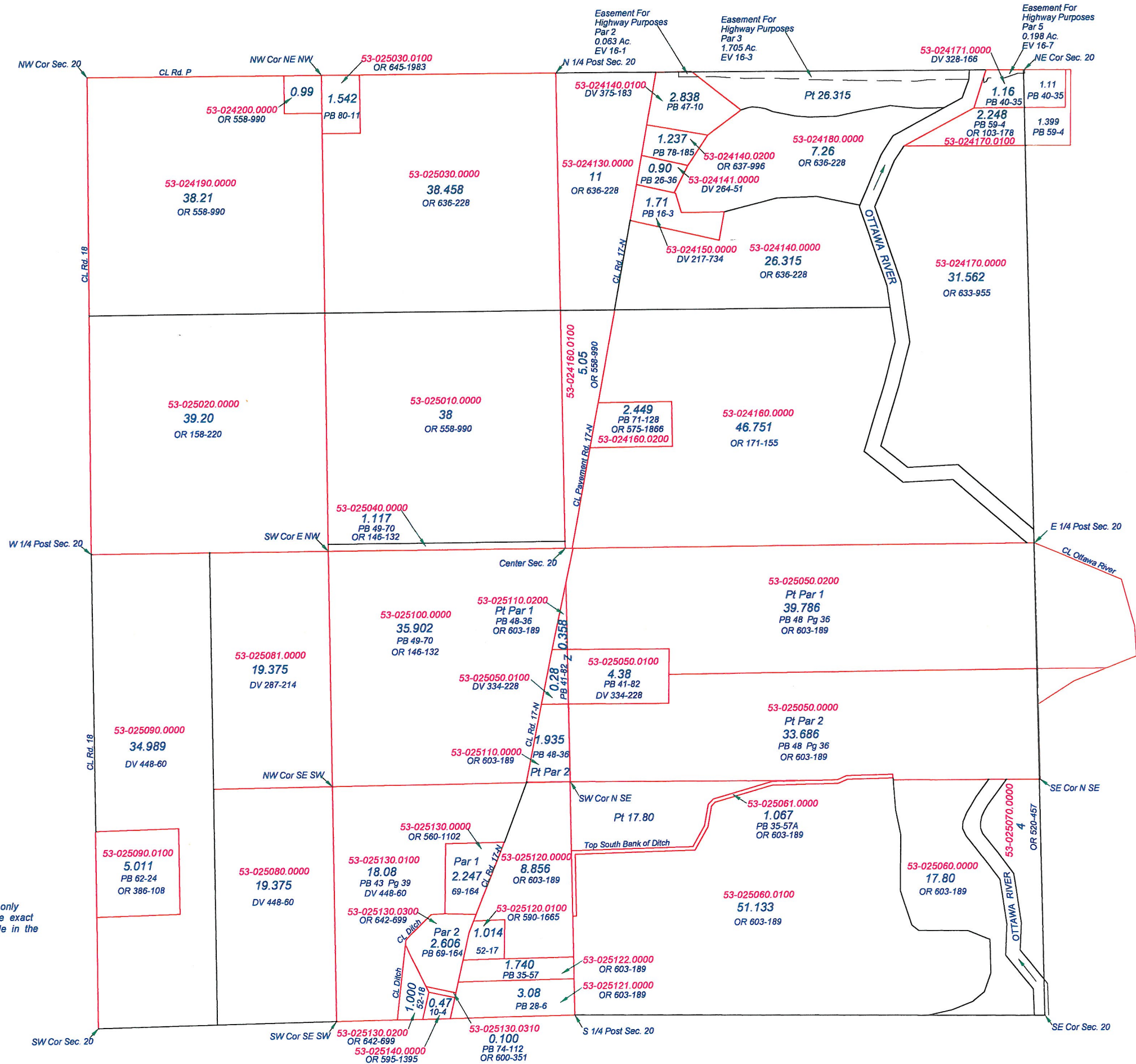


UNION TOWNSHIP
T1S R6E
SECTION 20



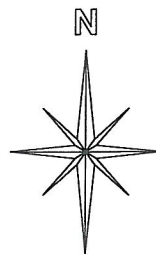
This is a worksheet and is for location purposes only and cannot be guaranteed for accuracy. For more exact information, please CHECK deeds and plats on file in the Putnam County Recorders Office, Ottawa, Ohio.

Revised 2013



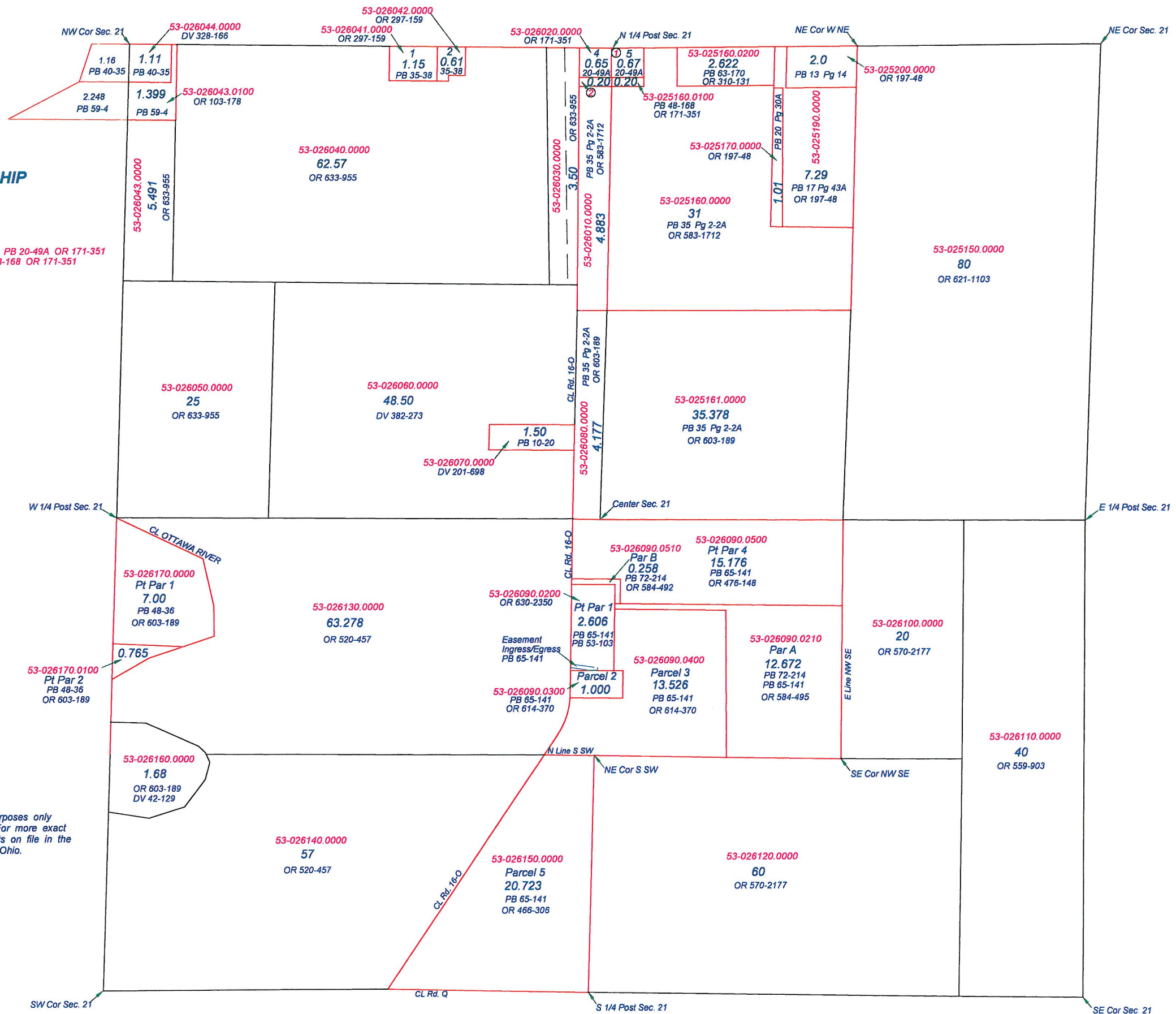
UNION TOWNSHIP
T1S R6E
SECTION 21

- ① 53-025180.0000 Par 5 0.67 Ac. PB 20-49A OR 171-351
- ② 53-026010.0100 0.20 Ac. PB 48-168 OR 171-351

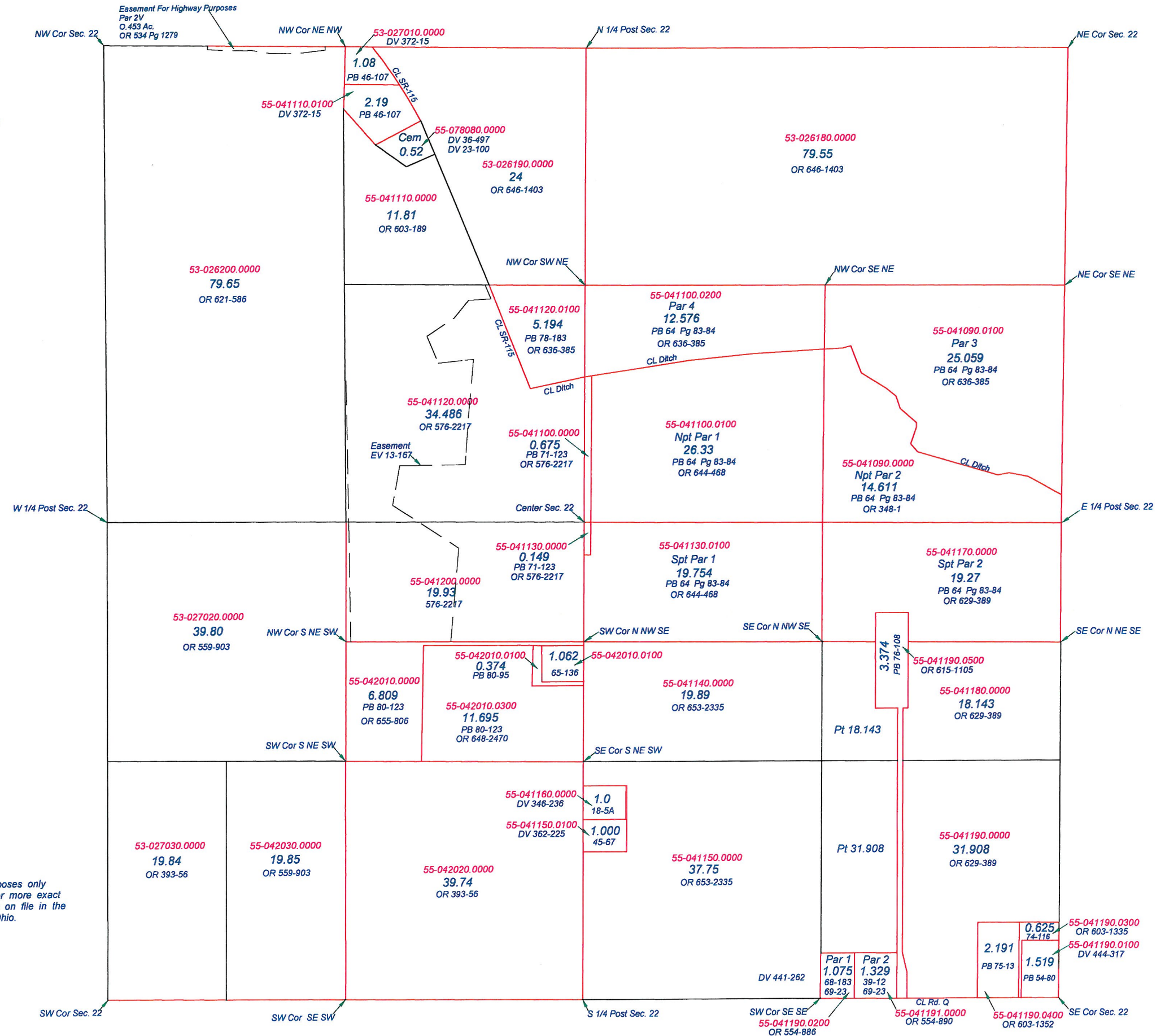


This is a worksheet and is for location purposes only and cannot be guaranteed for accuracy. For more exact information, please CHECK deeds and plats on file in the Putnam County Recorders Office, Ottawa, Ohio.

Revised 2013



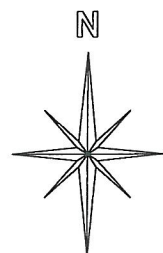
UNION TOWNSHIP
T1S R6E
SECTION 22



This is a worksheet and is for location purposes only and cannot be guaranteed for accuracy. For more exact information, please CHECK deeds and plats on file in the Putnam County Recorders Office, Ottawa, Ohio.

Revised 2013

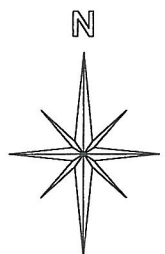
UNION TOWNSHIP
 T 1 S R 6 E
 SECTION 23



This is a worksheet and is for location purposes only and cannot be guaranteed for accuracy. For more exact information, please CHECK deeds and plats on file in the Putnam County Recorders Office, Ottawa, Ohio.

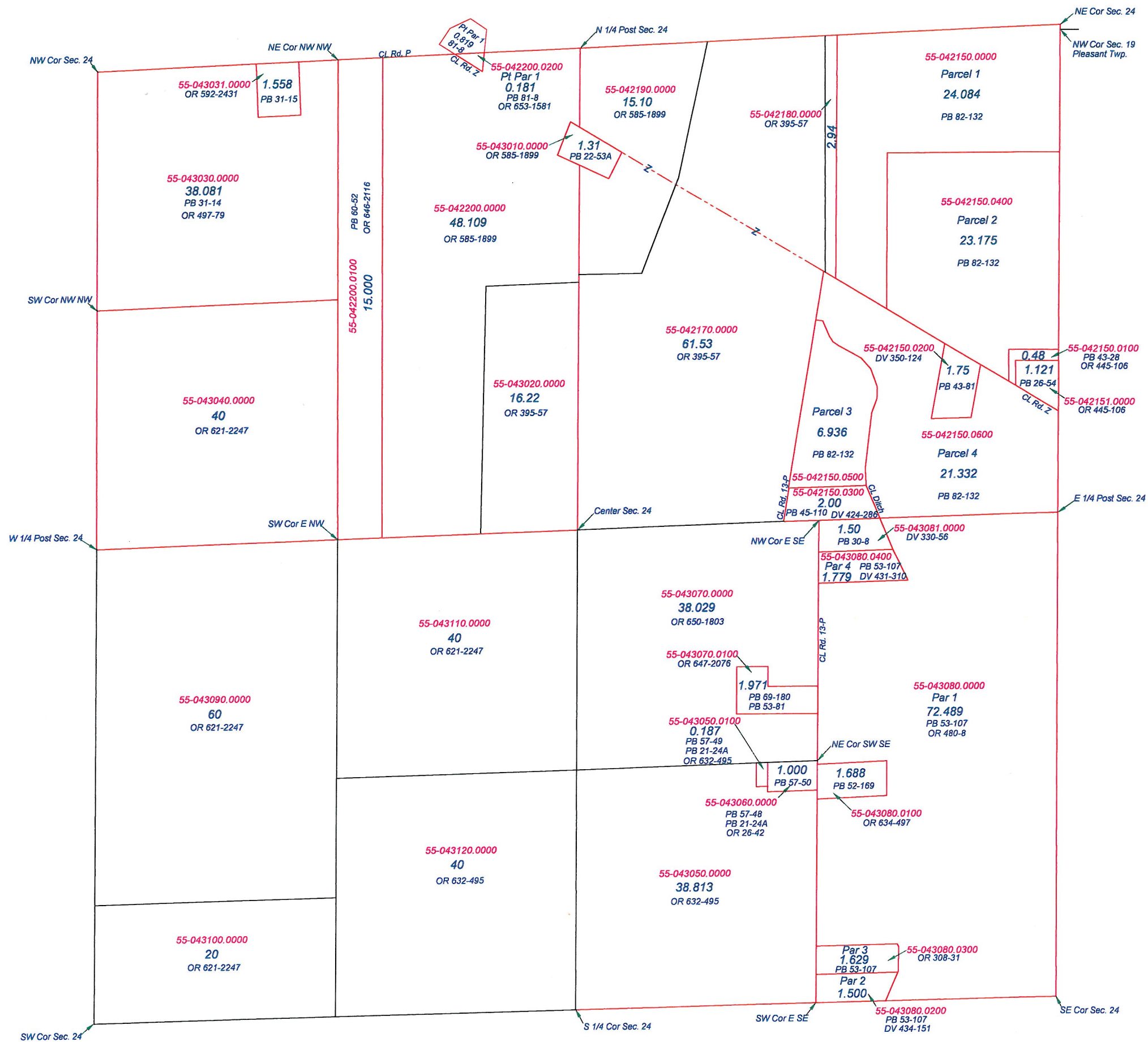
Revised 2013

UNION TOWNSHIP
 T1S R6E
 SECTION 24



This is a worksheet and is for location purposes only and cannot be guaranteed for accuracy. For more exact information, please CHECK deeds and plats on file in the Putnam County Recorders Office, Ottawa, Ohio.

Revised 2014

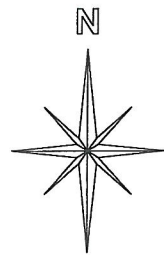


UNION TOWNSHIP

T1N R6E

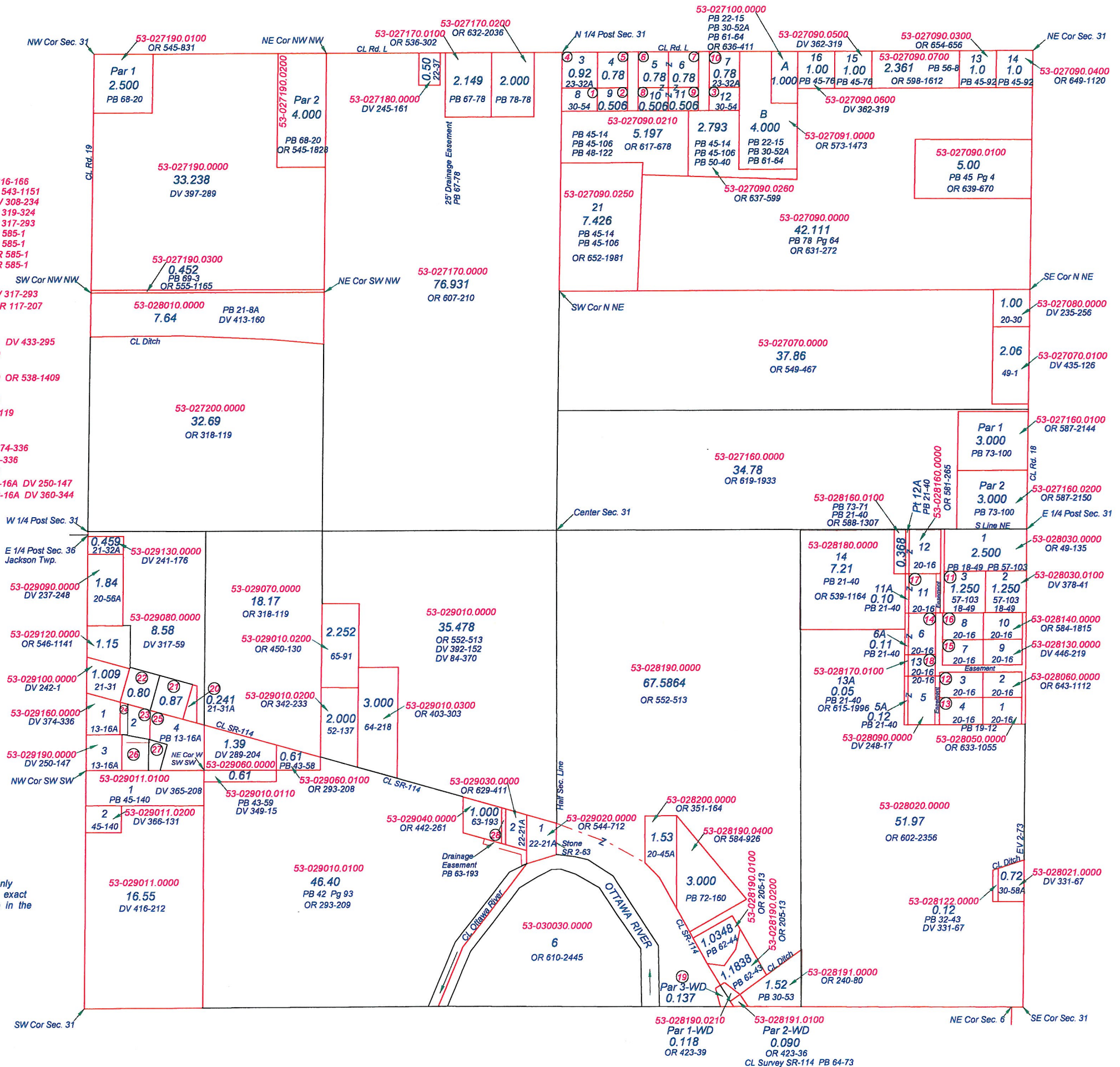
SECTION 31

- ① 53-027092.0000 Par 8 0.60 Ac. PB 30-54 DV 316-166
- ② 53-027093.0000 Par 9 0.506 Ac. PB 30-54 OR 543-1151
- ③ 53-027096.0000 Par 12 0.506 Ac. PB 30-54 DV 308-234
- ④ 53-027110.0000 Par 3 0.92 Ac. PB 23-32A DV 319-324
- ⑤ 53-027120.0000 Par 4 0.78 Ac. PB 23-32A DV 317-293
- ⑥ 53-027140.0000 Par 5 0.78 Ac. PB 23-32A OR 585-1
- ⑦ 53-027140.0000 Par 6 0.78 Ac. PB 23-32A OR 585-1
- ⑧ 53-027140.0000 Par 10 0.506 Ac. PB 30-54 OR 585-1
- ⑨ 53-027140.0000 Par 11 0.506 Ac. PB 30-54 OR 585-1
- ⑩ 53-027150.0000 Par 7 0.78 Ac. PB 23-32A DV 317-293
- ⑪ 53-028030.0200 Par 3 1.250 Ac. PB 57-103 OR 117-207
- ⑫ 53-028070.0000 Lot 3 PB 20-16 DV 408-138
- ⑬ 53-028080.0000 Lot 4 PB 20-16 DV 408-138
- ⑭ 53-028100.0000 Lots 6-8A PB 20-16 PB 21-40 DV 433-295
- ⑮ 53-028110.0000 Lot 7 PB 20-16 OR 549-1579
- ⑯ 53-028120.0000 Lot 8 PB 20-16 DV 329-285
- ⑰ 53-028150.0000 Lots 11-11A PB 20-16 PB 21-40 OR 538-1409
- ⑱ 53-028170.0000 Lot 13 PB 20-16 OR 615-2000
- ⑲ 53-028190.0300 Par 3-WD 0.137 Ac. OR 423-33
- ⑳ 53-029110.0000 0.241 Ac. PB 21-31A DV 241-119
- ㉑ 53-029140.0000 0.87 Ac. DV 220-550
- ㉒ 53-029150.0000 0.80 Ac. OR 614-557
- ㉓ 53-029170.0000 Par 2 Ex Pts PB 13-16A DV 374-336
- ㉔ 53-029180.0000 Par 2 Wpt PB 13-16A DV 374-336
- ㉕ 53-029200.0000 Par 4 PB 13-16A OR 547-331
- ㉖ 53-030010.0000 Par 2 SWpt & Par 4 SWcor PB 13-16A DV 250-147
- ㉗ 53-030020.0000 Par 2 SEcor & Par 4 Smdpt PB 13-16A DV 360-344
- ㉘ 53-029040.0100 0.104 Ac. PB 81-170

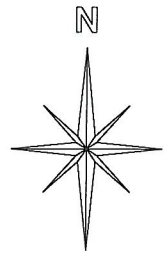


This is a worksheet and is for location purposes only and cannot be guaranteed for accuracy. For more exact information, please CHECK deeds and plats on file in the Putnam County Recorders Office, Ottawa, Ohio.

Revised 2014



UNION TOWNSHIP
T1N R6E
SECTION 35



This is a worksheet and is for location purposes only and cannot be guaranteed for accuracy. For more exact information, please CHECK deeds and plats on file in the Putnam County Recorders Office, Ottawa, Ohio.
Revised 2015

