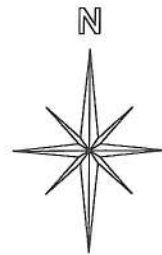


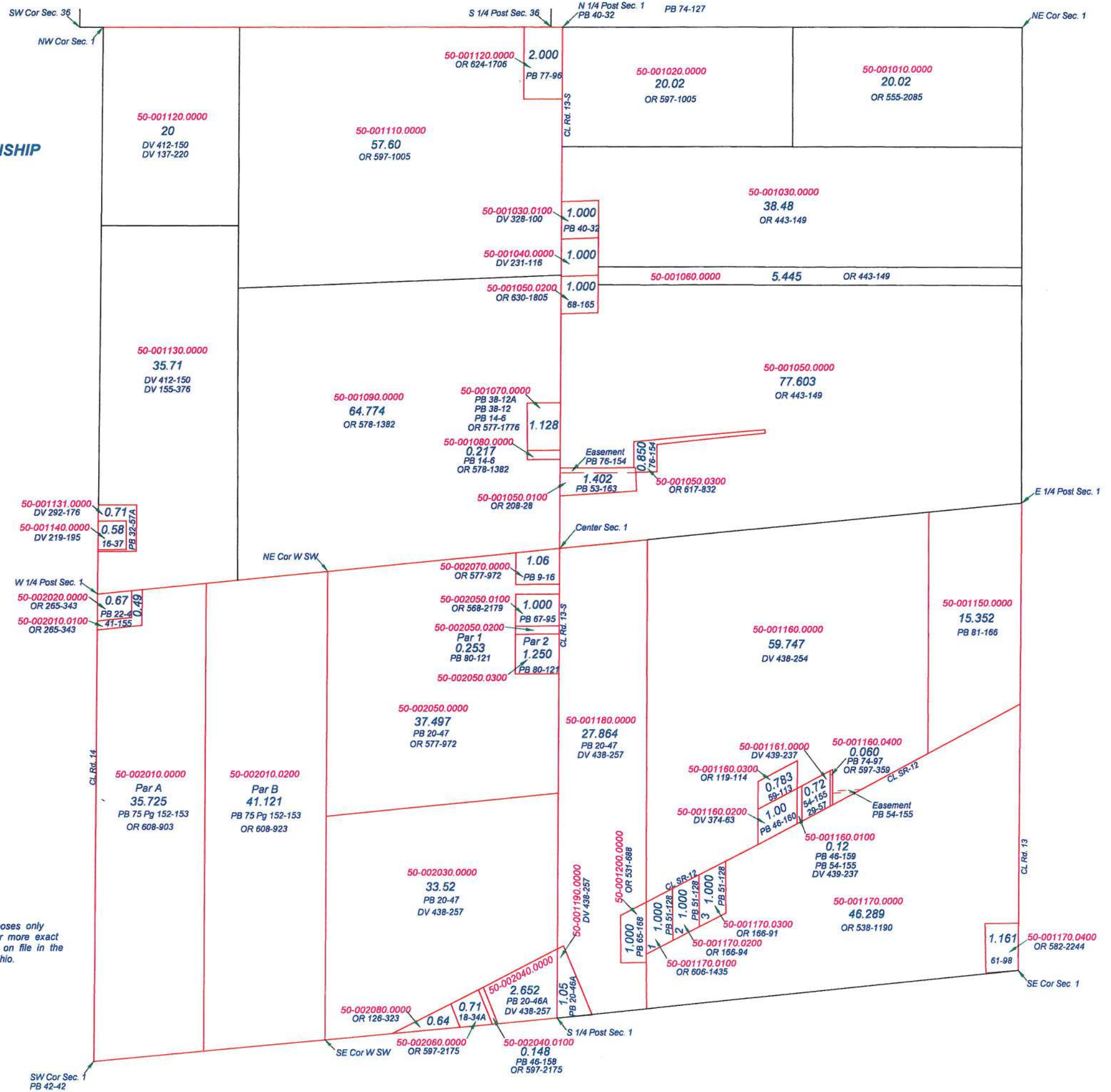
# SUGAR CREEK TOWNSHIP

T2S R6E  
SECTION 1



This is a worksheet and is for location purposes only and cannot be guaranteed for accuracy. For more exact information, please CHECK deeds and plats on file in the Putnam County Recorders Office, Ottawa, Ohio.

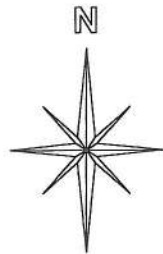
Revised 2014



**SUGAR CREEK TOWNSHIP**

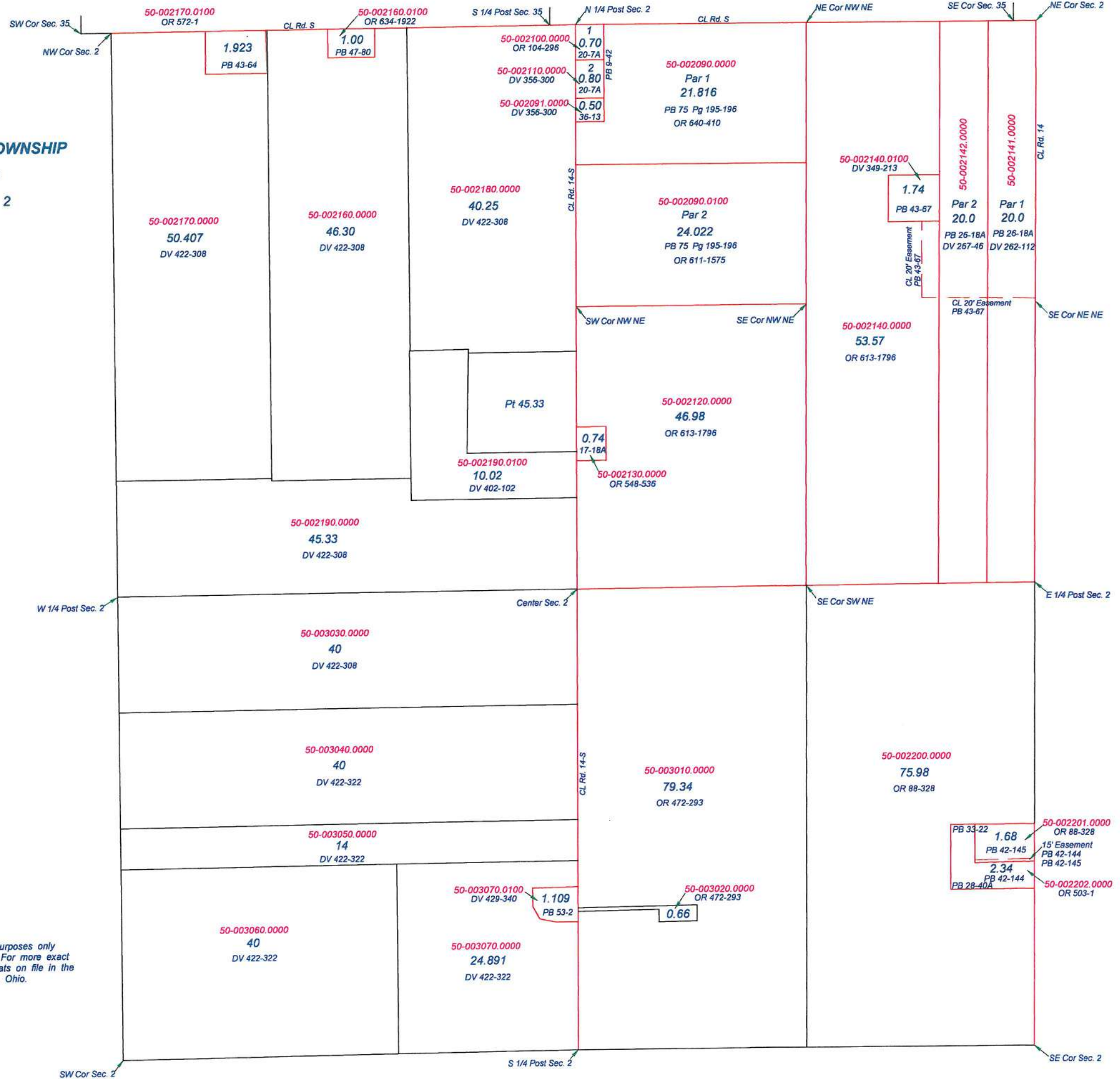
T2S R6E

SECTION 2



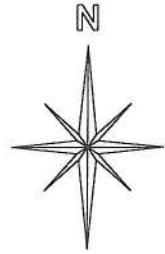
This is a worksheet and is for location purposes only and cannot be guaranteed for accuracy. For more exact information, please CHECK deeds and plats on file in the Putnam County Recorders Office, Ottawa, Ohio.

Revised 2013



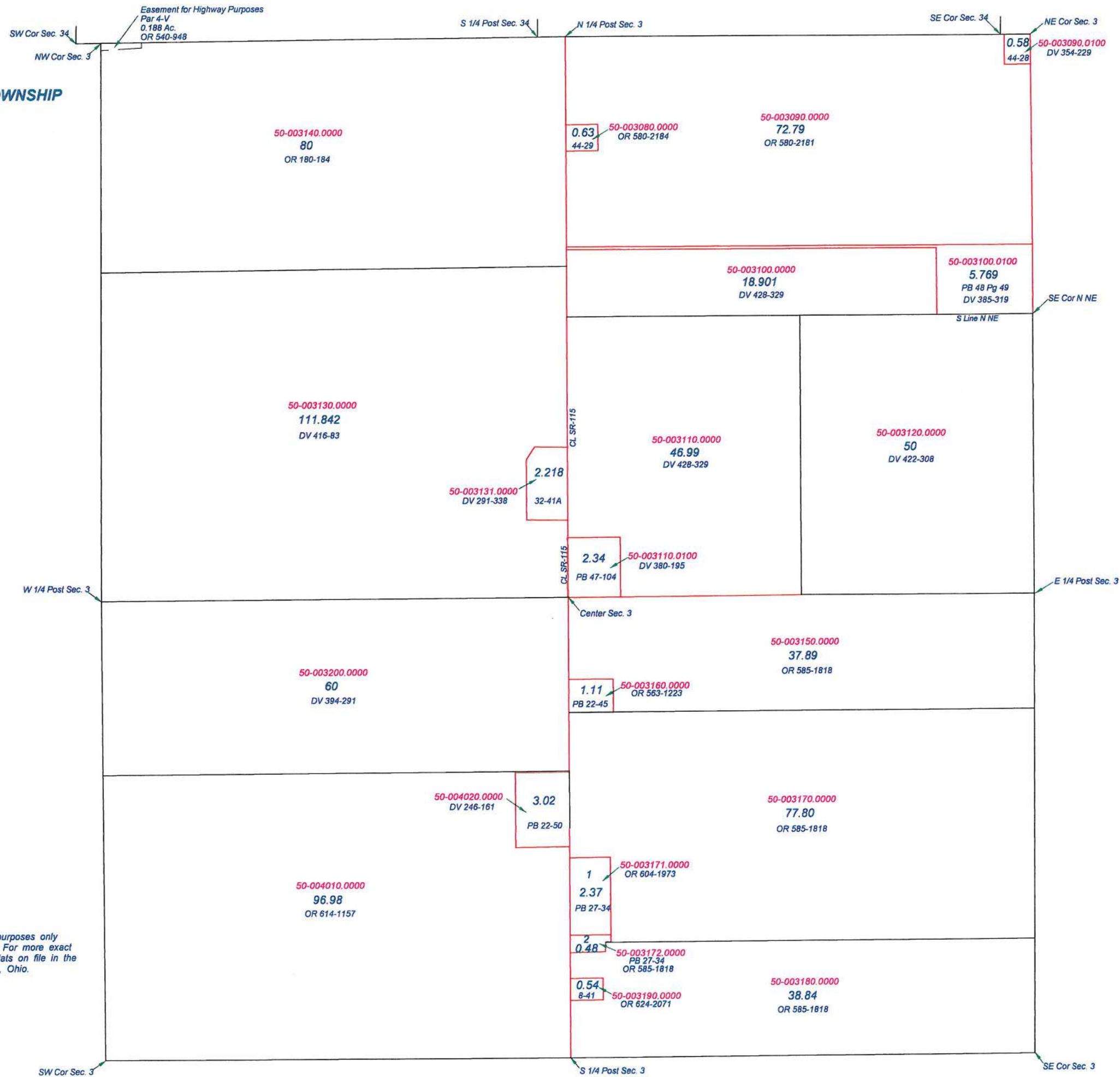
**SUGAR CREEK TOWNSHIP**

T 2 S R 6 E  
SECTION 3



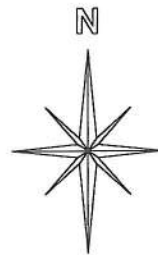
This is a worksheet and is for location purposes only and cannot be guaranteed for accuracy. For more exact information, please CHECK deeds and plats on file in the Putnam County Recorders Office, Ottawa, Ohio.

Revised 2013



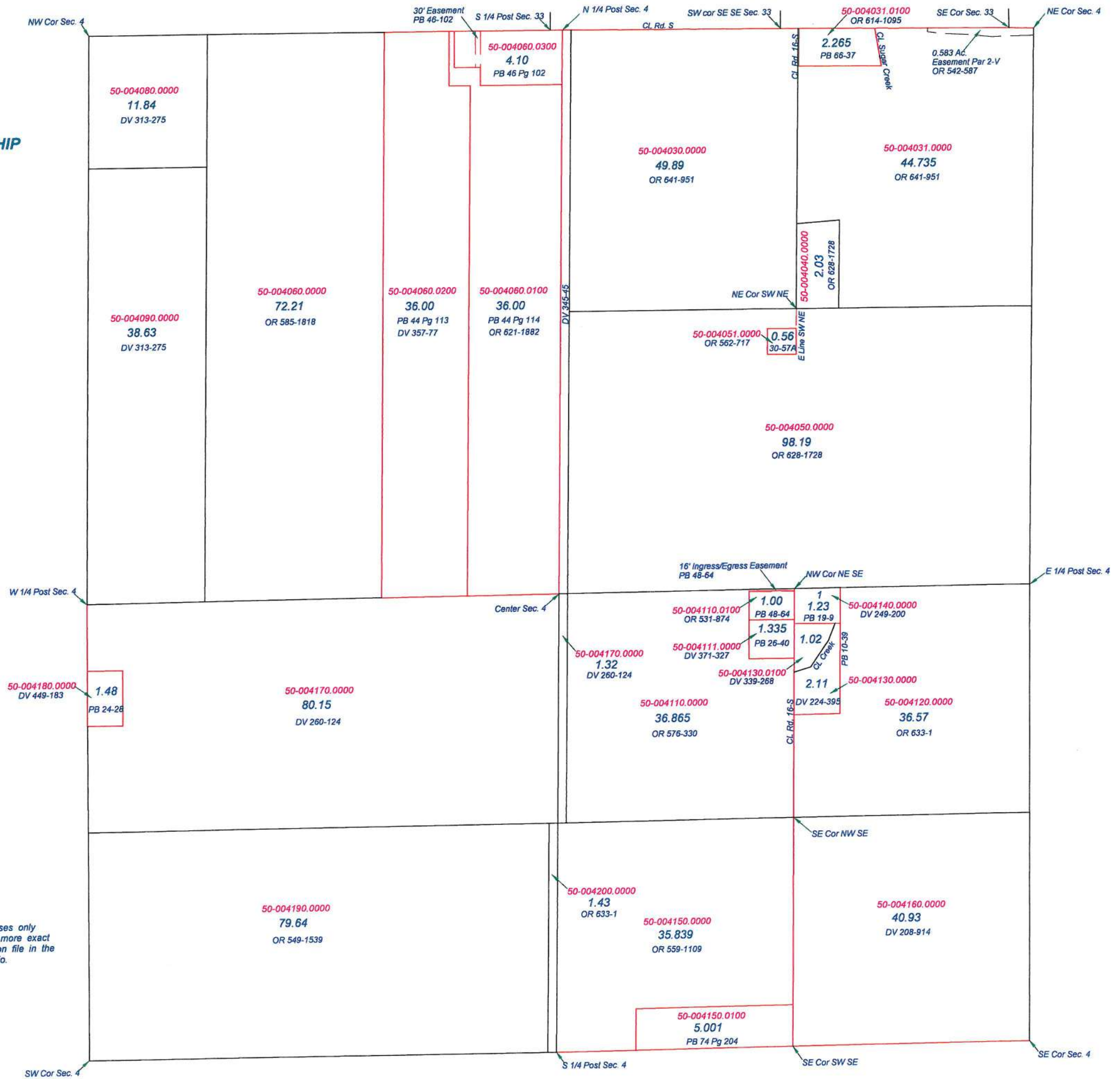
**SUGAR CREEK TOWNSHIP**

T2S R6E  
SECTION 4

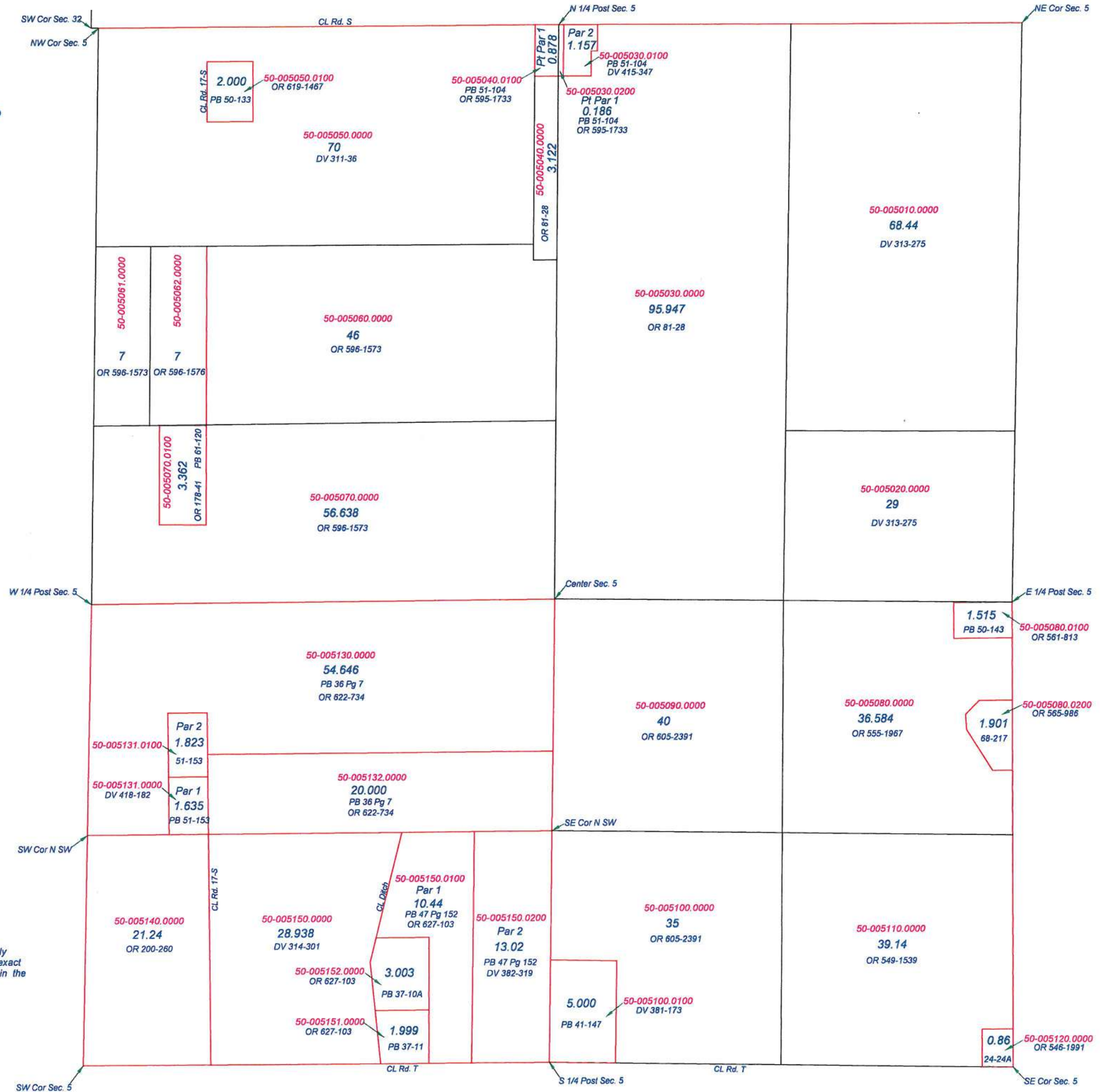


This is a worksheet and is for location purposes only and cannot be guaranteed for accuracy. For more exact information, please CHECK deeds and plats on file in the Putnam County Recorders Office, Ottawa, Ohio.

Revised 2013



**SUGAR CREEK TOWNSHIP**  
T2S R6E  
SECTION 5



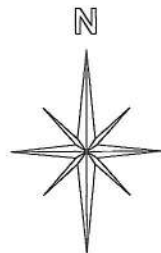
This is a worksheet and is for location purposes only and cannot be guaranteed for accuracy. For more exact information, please CHECK deeds and plats on file in the Putnam County Recorders Office, Ottawa, Ohio.

Revised 2013

**SUGAR CREEK TOWNSHIP**

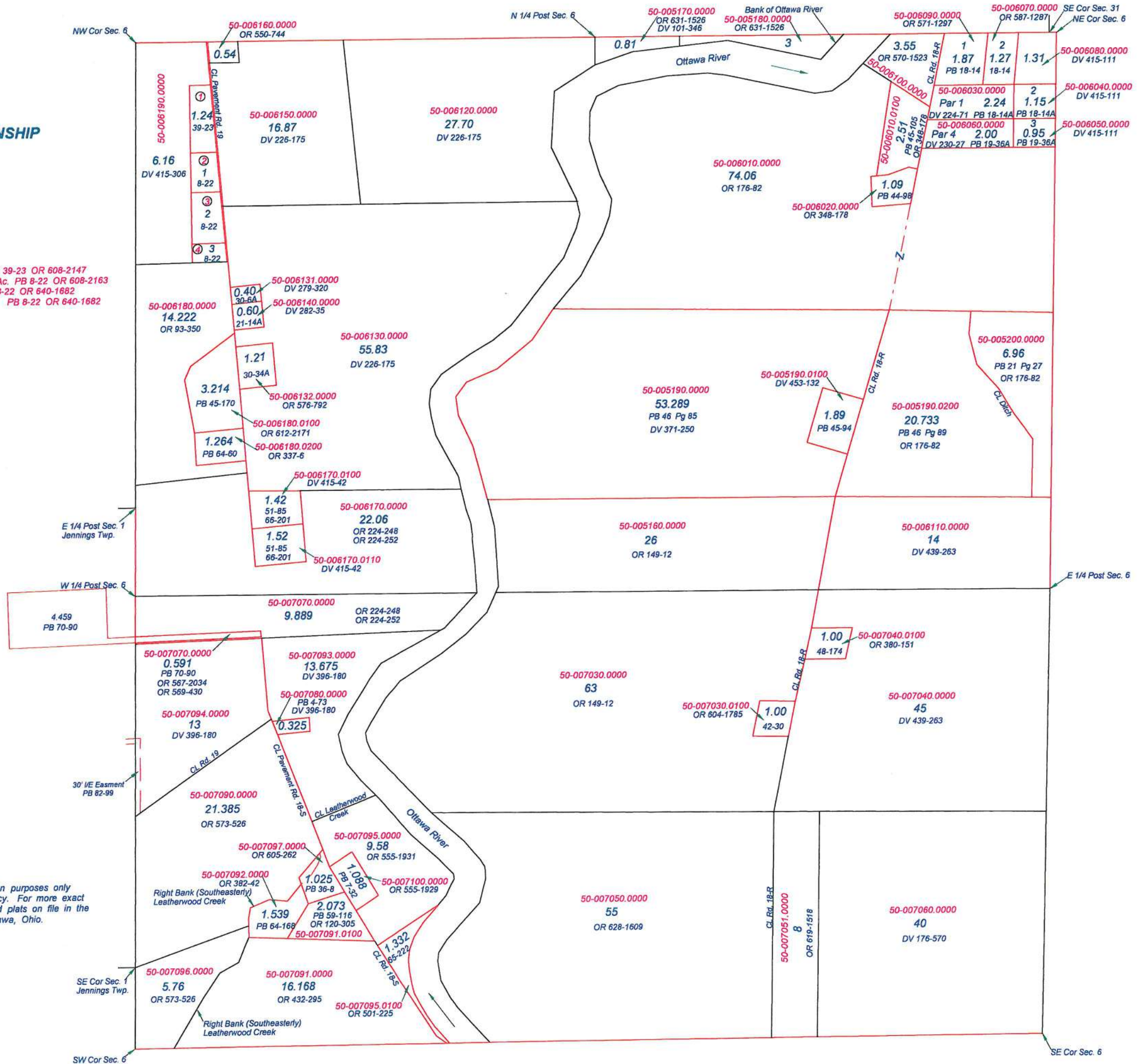
T2S R6E  
SECTION 6

- ① 50-006191.0000 1.24 Ac. PB 39-23 OR 608-2147
- ② 50-006200.0000 Par 1 0.86 Ac. PB 8-22 OR 608-2163
- ③ 50-007010.0000 Par 2 PB 8-22 OR 640-1682
- ④ 50-007020.0000 Par 3 0.50 PB 8-22 OR 640-1682



This is a worksheet and is for location purposes only and cannot be guaranteed for accuracy. For more exact information, please CHECK deeds and plats on file in the Putnam County Recorders Office, Ottawa, Ohio.

Revised 2014

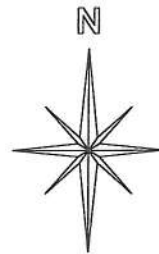


**SUGAR CREEK TOWNSHIP**

T 2 S R 6 E

SECTION 7

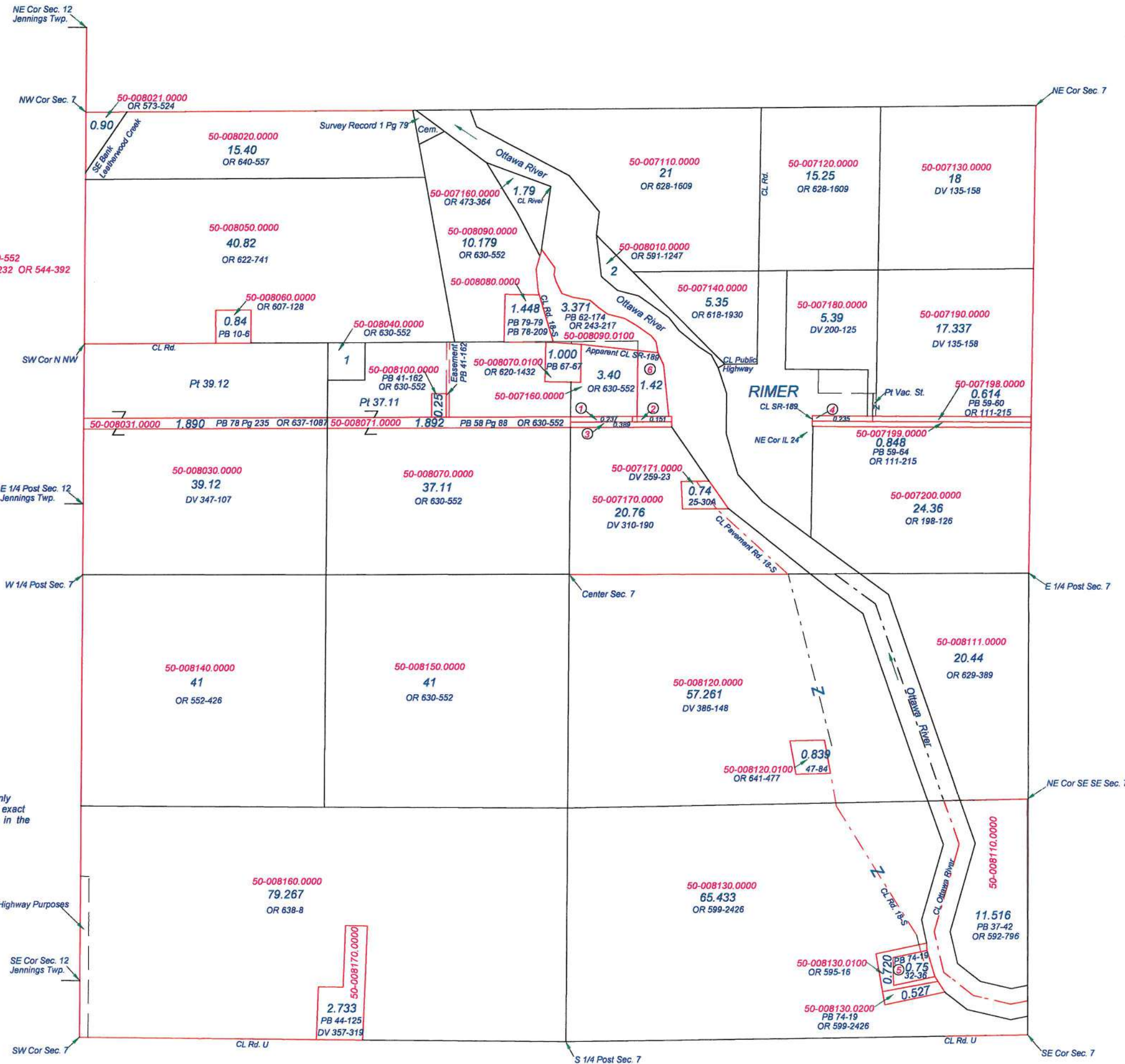
- ① 50-007161.0000 0.237 Ac. PB 58-90 PB 58-91 OR 630-552
- ② 50-007162.0000 0.151 Ac. PB 58-90 PB 58-91 PB 67-232 OR 544-392
- ③ 50-007163.0000 0.389 Ac. PB 58-89 OR 630-552
- ④ 50-007197.0000 0.235 Ac. PB 59-63 OR 111-215
- ⑤ 50-008131.0000 0.75 Ac. PB 32-36 OR 540-2311
- ⑥ 50-045021.0000 1.42 Ac. PB 67-240



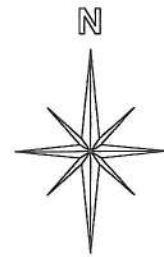
This is a worksheet and is for location purposes only and cannot be guaranteed for accuracy. For more exact information, please CHECK deeds and plats on file in the Putnam County Recorders Office, Ottawa, Ohio.

Revised 2013

Easement for Highway Purposes  
1.033 Ac.  
OR 628-810

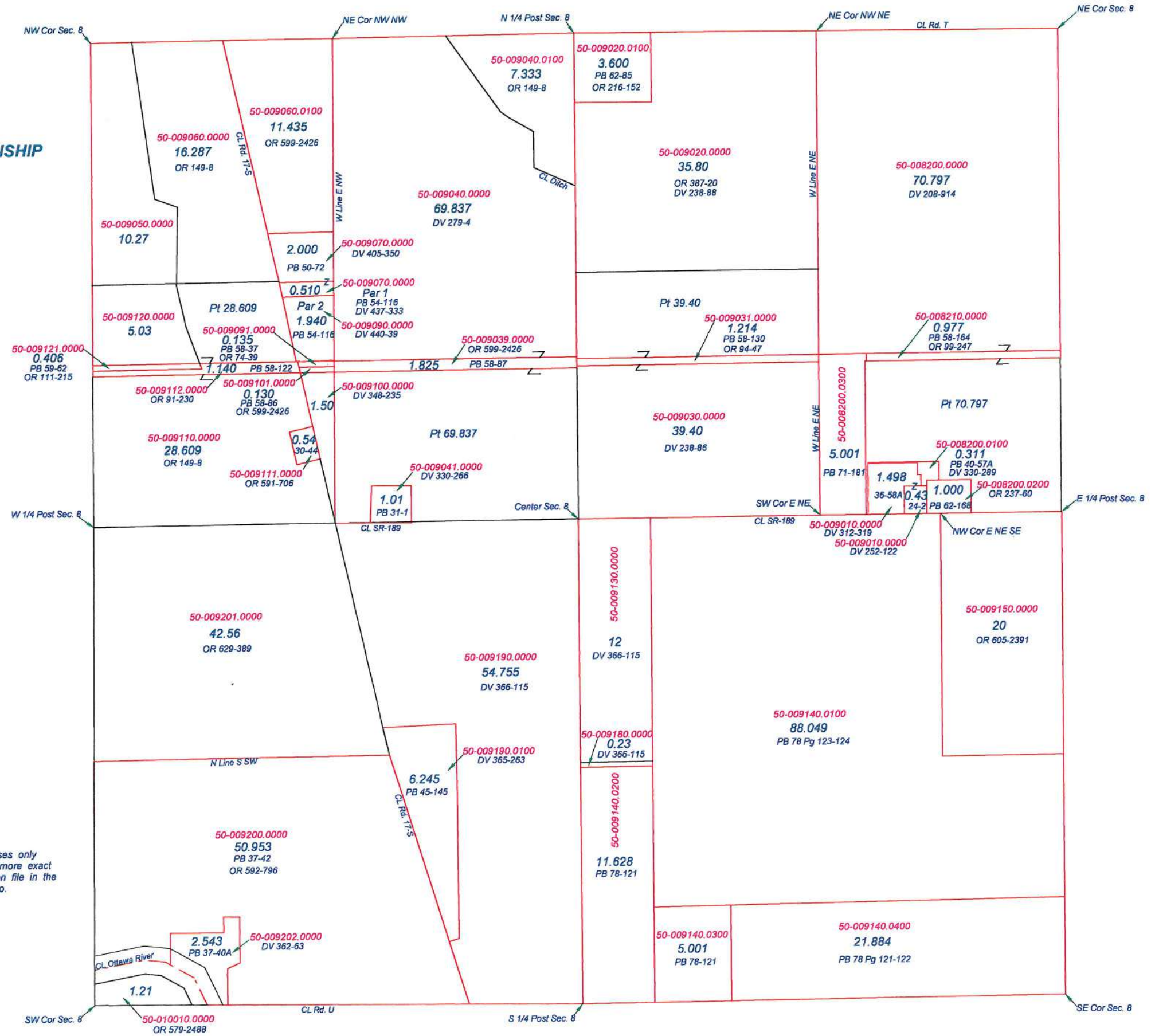


**SUGAR CREEK TOWNSHIP**  
T2S R6E  
SECTION 8



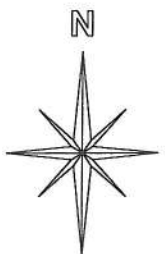
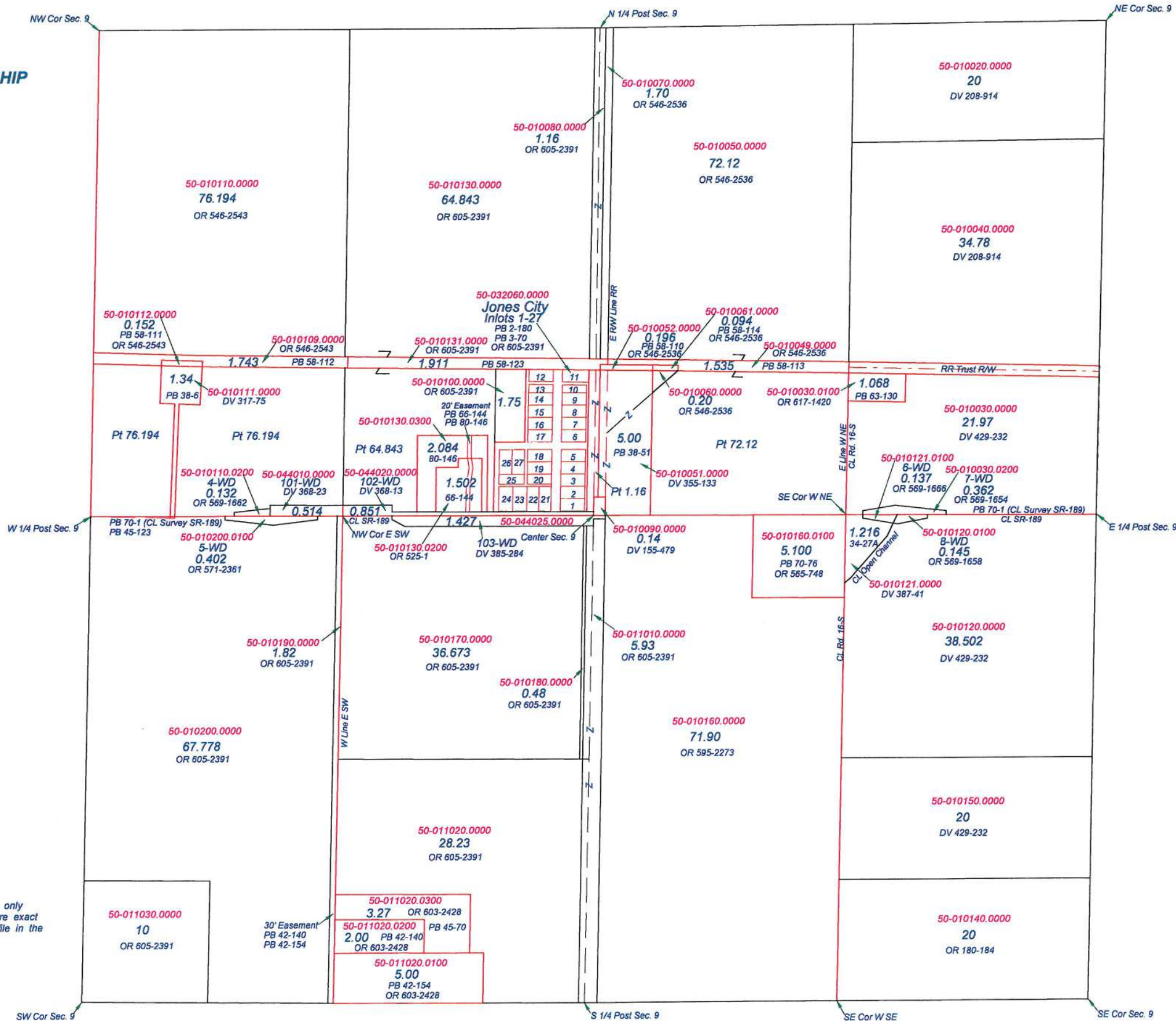
This is a worksheet and is for location purposes only and cannot be guaranteed for accuracy. For more exact information, please CHECK deeds and plats on file in the Putnam County Recorders Office, Ottawa, Ohio.

Revised 2013





**SUGAR CREEK TOWNSHIP**  
T2S R6E  
SECTION 9



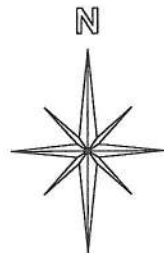
This is a worksheet and is for location purposes only and cannot be guaranteed for accuracy. For more exact information, please CHECK deeds and plats on file in the Putnam County Recorders Office, Ottawa, Ohio.

Revised 2013

**SUGAR CREEK TOWNSHIP**

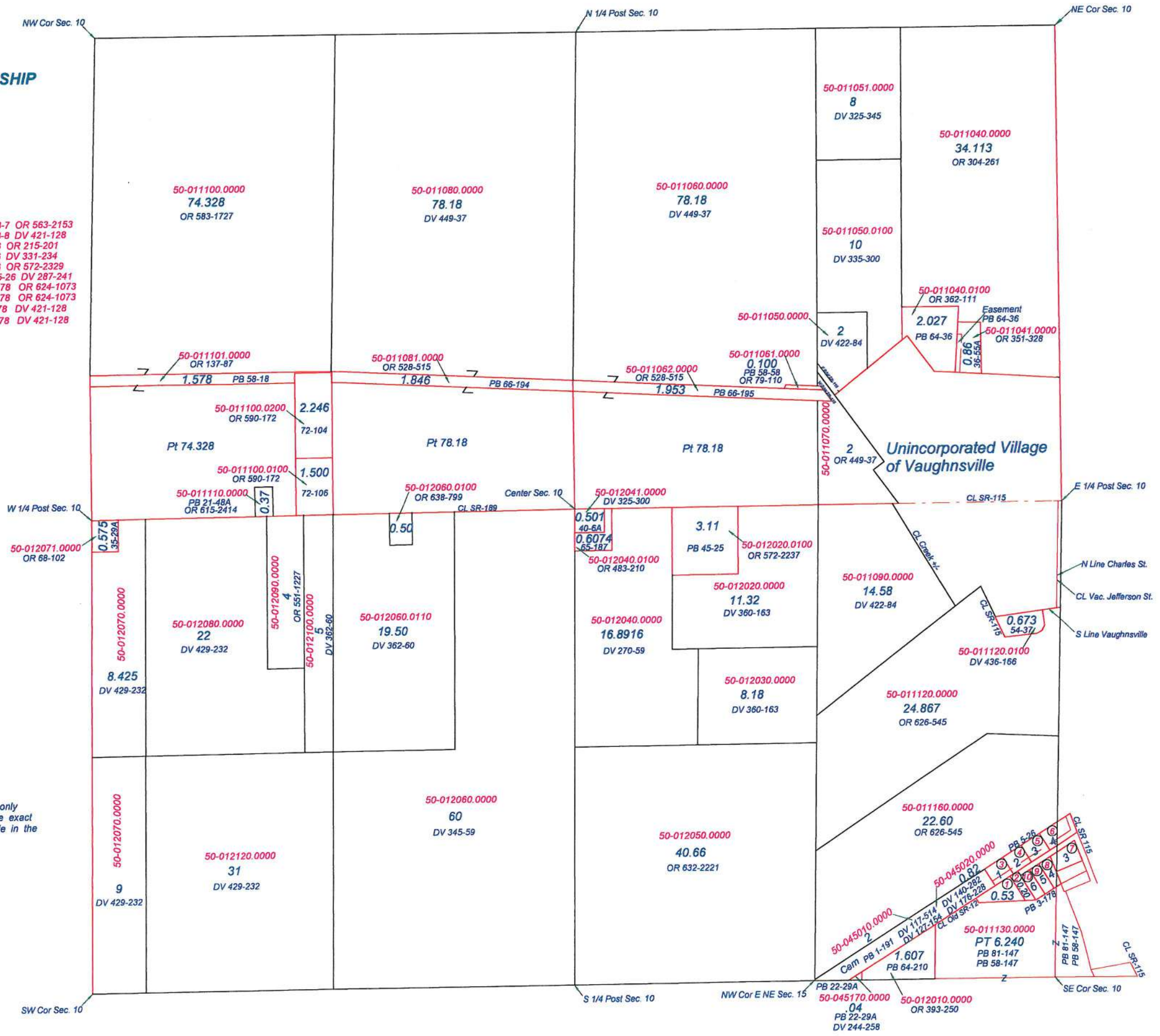
T2S R6E  
SECTION 10

- ① 50-011140.0000 0.53 Ac. PB 8-7 OR 563-2153
- ② 50-011150.0000 0.20 Ac. PB 8-8 DV 421-128
- ③ 50-011170.0000 Lot 1 PB 5-26 OR 215-201
- ④ 50-011180.0000 Lot 2 PB 5-26 DV 331-234
- ⑤ 50-011190.0000 Lot 3 PB 5-26 OR 572-2329
- ⑥ 50-011200.0000 Lot 4 Pt PB 5-26 DV 287-241
- ⑦ 50-014180.0000 Par 3 PB 3-178 OR 624-1073
- ⑧ 50-014190.0000 Par 4 PB 3-178 OR 624-1073
- ⑨ 50-014200.0000 Par 5 PB 3-178 DV 421-128
- ⑩ 50-015010.0000 Par 6 PB 3-178 DV 421-128



This is a worksheet and is for location purposes only and cannot be guaranteed for accuracy. For more exact information, please CHECK deeds and plats on file in the Putnam County Recorders Office, Ottawa, Ohio.

Revised 2014



**SUGAR CREEK TOWNSHIP**

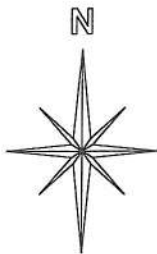
T2S R6E

SECTION 11

- 1 50-012200.0100 Ept SWcor E NW 1.986 Ac. OR 549-2117
- 2 50-012201.0000 Former RR R/W 0.306 Ac. PB 58-61 OR 549-2117
- 3 50-013010.0000 Npt Smdpt E NW 1.014 Ac. DV 402-60
- 4 50-013011.0000 Former RR R/W 0.312 Ac. PB 58-62 OR 549-2117
- 5 50-013020.0000 Ept NEpt Spt Smdpt E NW 0.45 Ac. DV 249-154
- 6 50-013030.0000 Wpt NEpt Spt Smdpt E NW 0.58 Ac. DV 411-182
- 7 50-013051.0000 NWCor SECor NW 0.725 Ac. PB 33-34A DV 370-217
- 8 50-013052.0000 NE Cor SE Cor NW 0.696 Ac. PB 35-31 OR 370-275
- 9 50-013100.0000 Lot 1 0.25 Ac. OR 630-404
- 10 50-013110.0000 Lot 2 0.25 Ac. DV 403-124
- 11 50-013120.0000 Lot 3 0.25 Ac. DV 393-324
- 12 50-013130.0000 Lot 4 0.25 Ac. DV 258-232
- 13 50-013140.0000 Wpt Lot 1 SW 0.17 Ac. DV 451-210
- 14 50-013150.0000 Ept Lot 1 SW 0.33 Ac. OR 574-1908
- 15 50-013160.0000 Ept Lot 2 0.30 Ac. DV 451-210
- 16 50-013170.0000 Mdpt Mdpt Npt W SW 0.30 Ac. DV 365-251
- 17 50-013180.0000 Ept Mdpt Mdpt Npt W SW 0.44 Ac. OR 624-2122 DV 163-567
- 18 50-013190.0000 Pt Nmdpt W SW 0.36 Ac. DV 421-244
- 19 50-013200.0000 Pt Nmdpt W SW 0.35 Ac. OR 591-2320
- 20 50-014011.0000 Pt Nmdpt SW 0.008 Ac. PB 32-35 OR 591-2320
- 21 50-014012.0000 Pt NW & SW 1.05 Ac. PB 35-41A DV 305-345
- 22 50-014020.0000 Nmdpt SW 0.092 Ac. DV 421-244

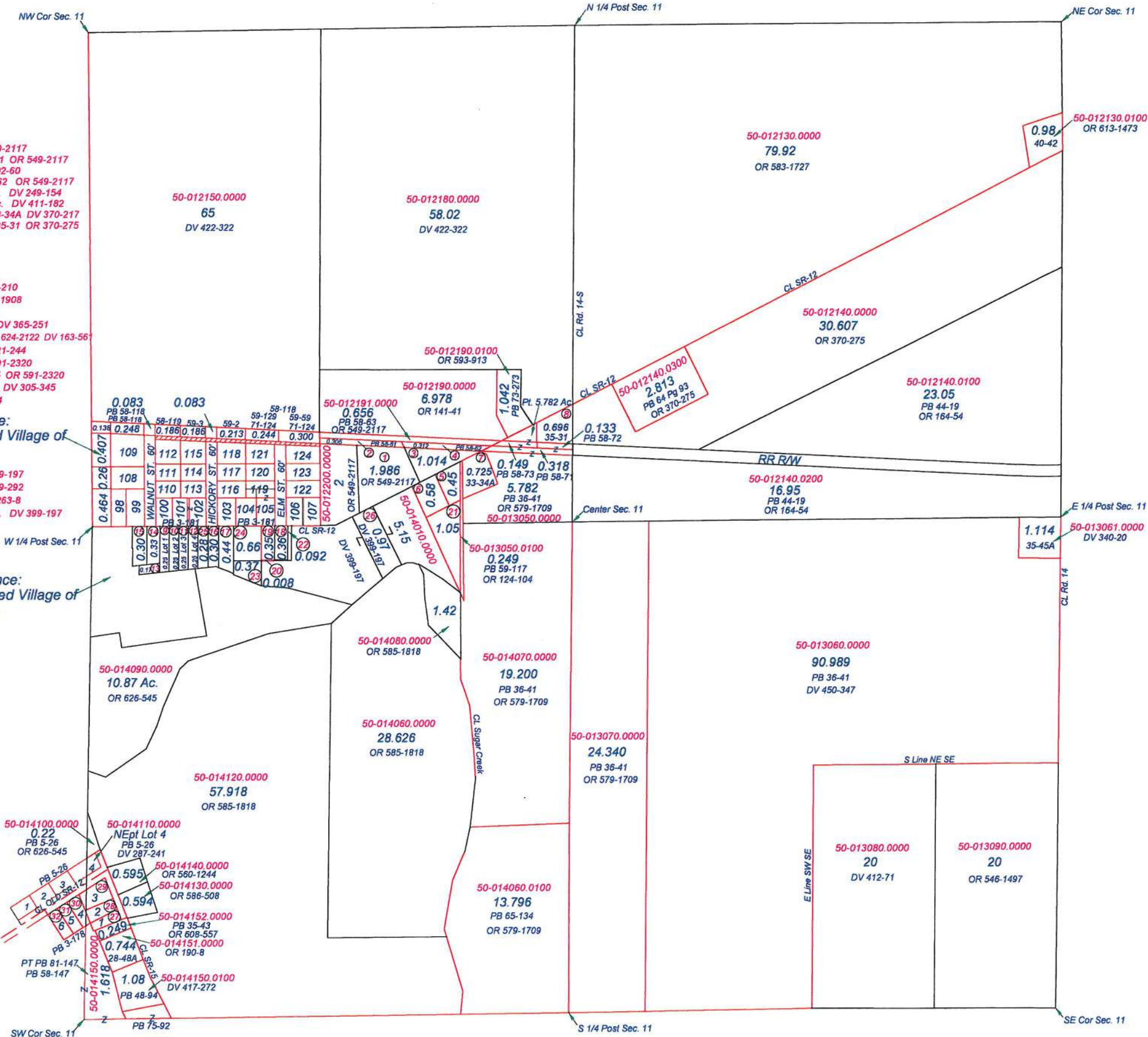
- 23 50-014030.0000 Nmdpt SW Ex Pt 0.37 Ac. DV 399-197
- 24 50-014040.0000 Nmdpt SW Ex Pt 0.66 Ac. DV 449-292
- 25 50-014050.0000 Wpt Mdpt N W SW 0.28 Ac. DV 263-8
- 26 50-013040.0000 Spt Smdpt E NW Ex NEpt 0.97 Ac. DV 399-197
- 27 50-014160.0000 Lot 1 PB 3-178 OR 608-557
- 28 50-014170.0000 Lot 2 PB 3-178 OR 608-557
- 29 50-014180.0000 Par 3 PB 3-178 OR 624-1073
- 30 50-014190.0000 Par 4 PB 3-178 OR 624-1073

- 31 50-014200.0000 Par 5 PB 3-178 DV 421-128
- 32 50-015010.0000 Par 6 PB 3-178 DV 421-128



This is a worksheet and is for location purposes only and cannot be guaranteed for accuracy. For more exact information, please CHECK deeds and plats on file in the Putnam County Recorders Office, Ottawa, Ohio.

Revised 2014

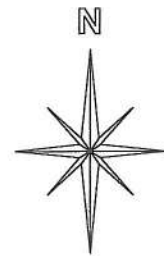


### SUGAR CREEK TOWNSHIP

T 2 S R 6 E

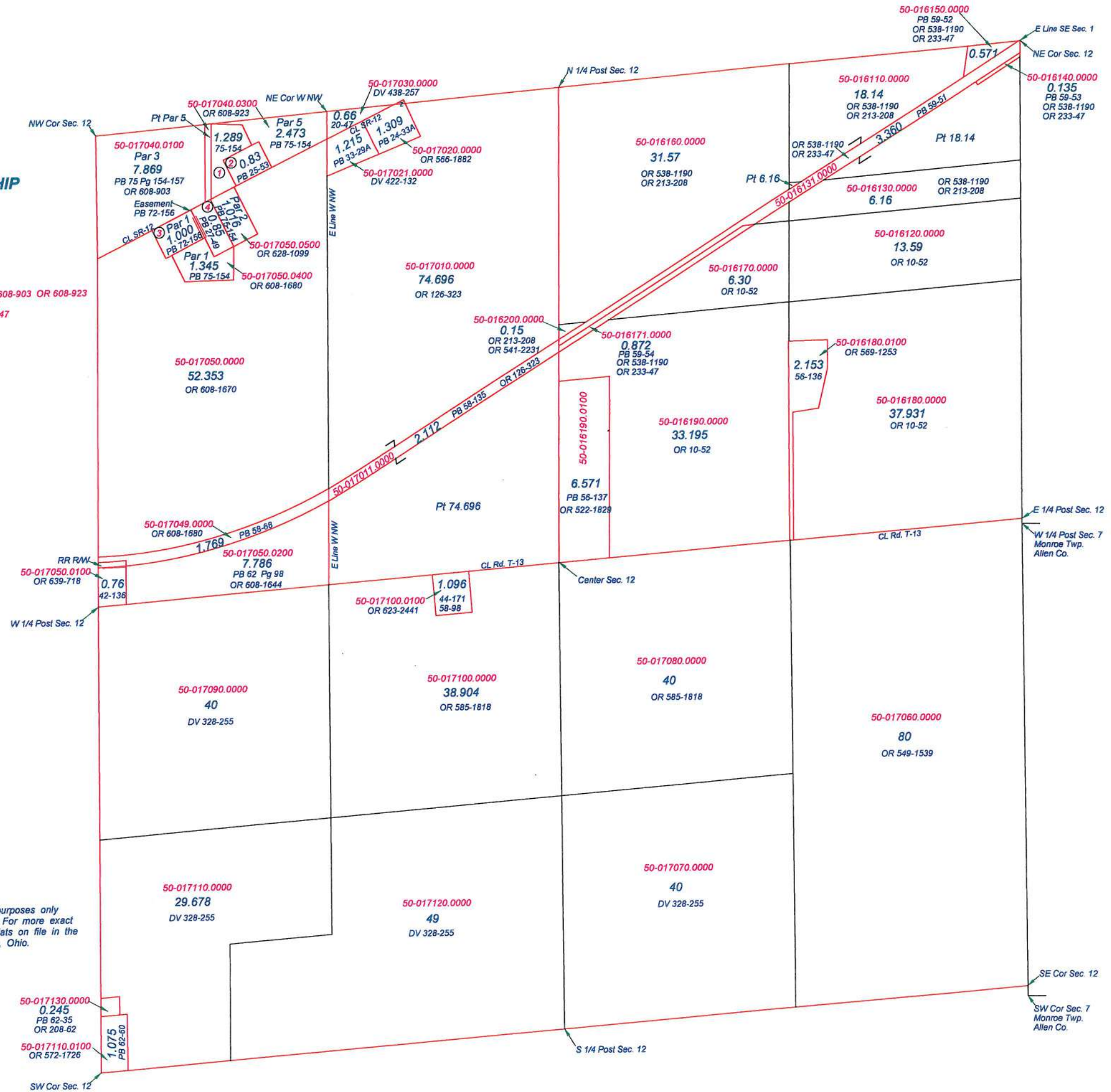
### SECTION 12

- ① 50-017040.0200 Par 4 1.289 Ac. PB 75-154 OR 608-903 OR 608-923
- ② 50-017041.0000 0.83 Ac. PB 25-53 OR 575-2217
- ③ 50-017050.0300 1.000 Ac. PB 72-156 OR 608-1647
- ④ 50-017051.0000 0.85 Ac. PB 27-49 OR 153-17



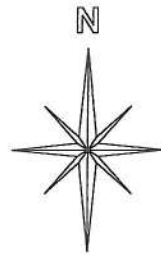
This is a worksheet and is for location purposes only and cannot be guaranteed for accuracy. For more exact information, please CHECK deeds and plats on file in the Putnam County Recorders Office, Ottawa, Ohio.

Revised 2013



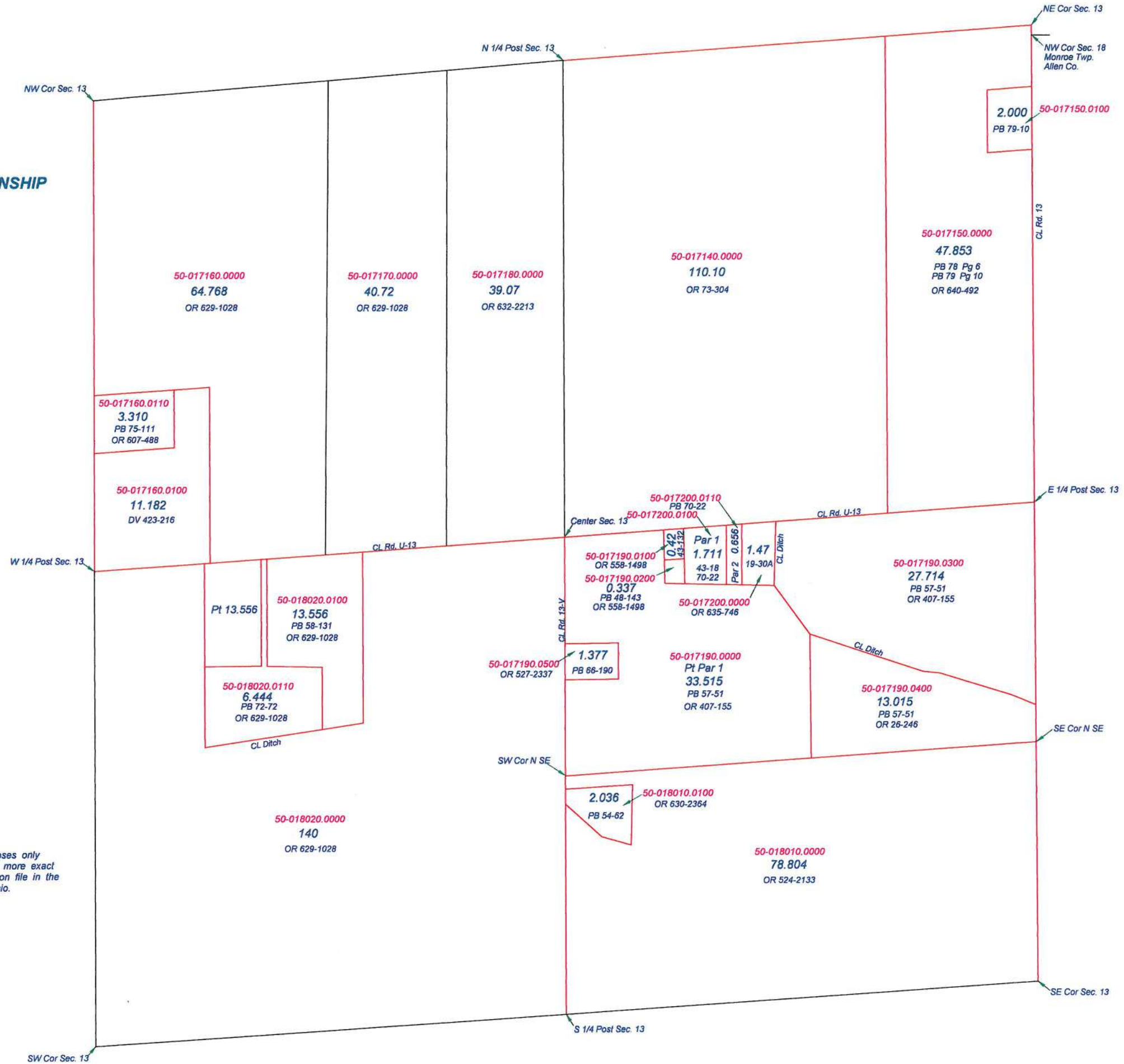
**SUGAR CREEK TOWNSHIP**

T2S R6E  
SECTION 13



This is a worksheet and is for location purposes only and cannot be guaranteed for accuracy. For more exact information, please CHECK deeds and plats on file in the Putnam County Recorders Office, Ottawa, Ohio.

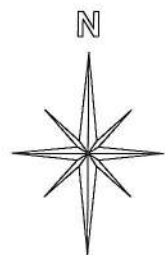
Revised 2013



**SUGAR CREEK TOWNSHIP**

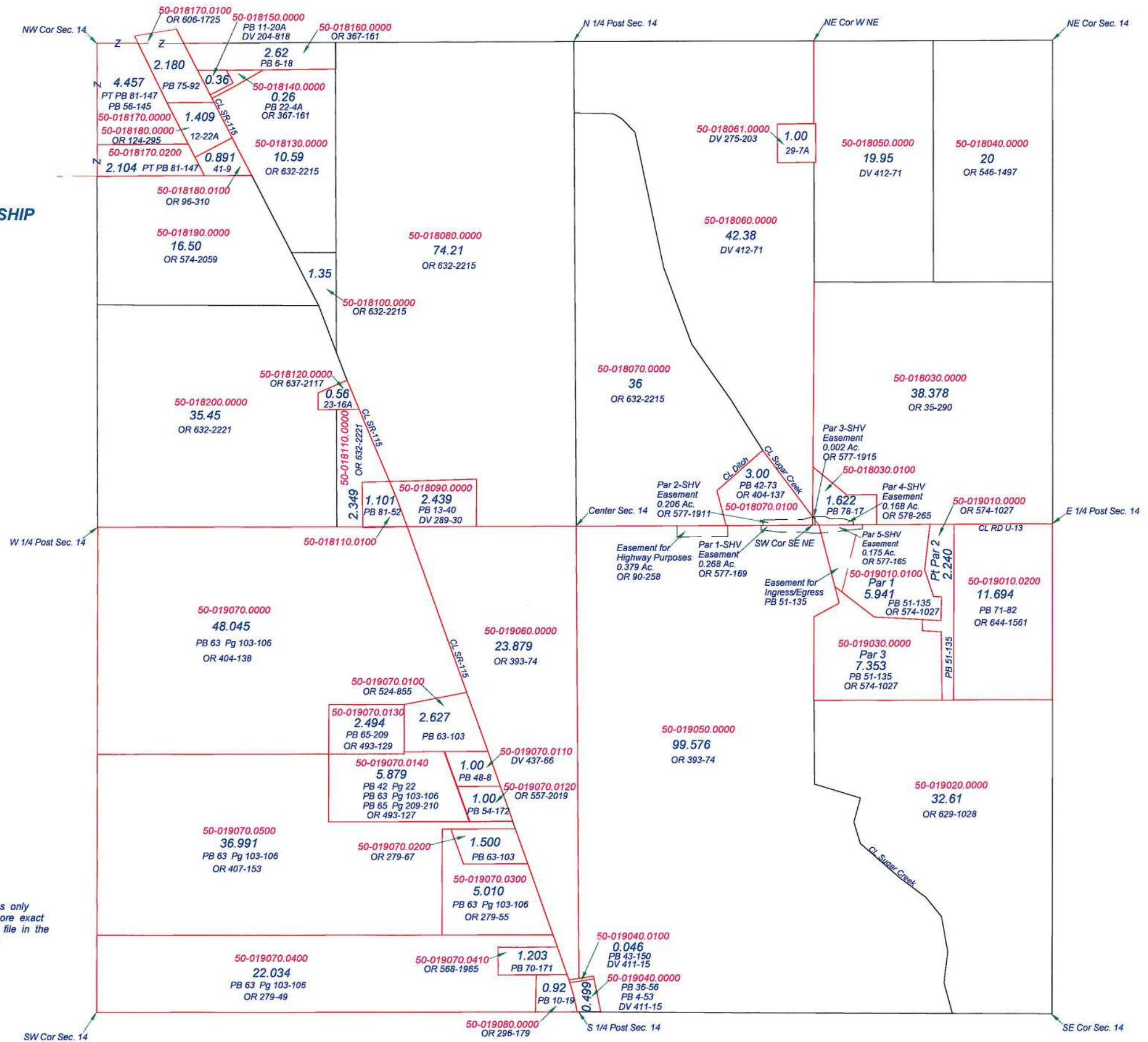
T2S R6E

SECTION 14



This is a worksheet and is for location purposes only and cannot be guaranteed for accuracy. For more exact information, please CHECK deeds and plats on file in the Putnam County Recorders Office, Ottawa, Ohio.

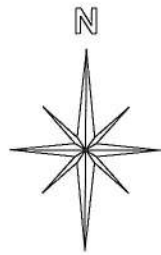
Revised 2014



**SUGAR CREEK TOWNSHIP**

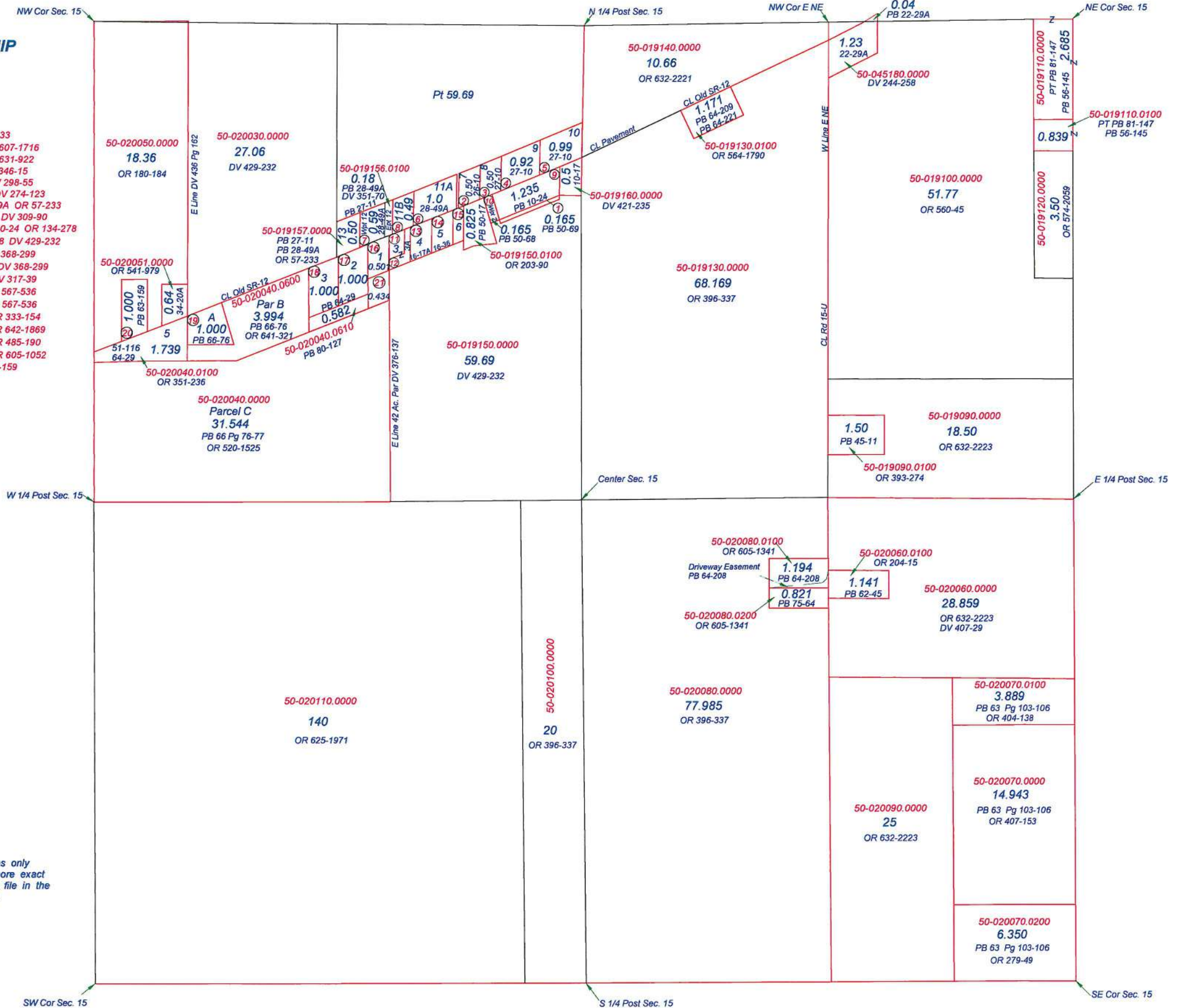
**T2S R6E  
SECTION 15**

- ① 50-019150.0200 0.165 Ac. PB 50-69 DV 406-133
- ② 50-019151.0000 Par 7 0.50 Ac. PB 26-10 OR 607-1716
- ③ 50-019152.0000 Par 8 0.50 Ac. PB 27-10 OR 631-922
- ④ 50-019153.0000 Par 9 0.92 Ac. PB 27-10 DV 346-15
- ⑤ 50-019154.0000 Par 10 0.99 Ac. PB 27-10 DV 298-55
- ⑥ 50-019155.0000 Par 11A 1.0 Ac. PB 28-49A DV 274-123
- ⑦ 50-019156.0000 Wpt Par 12 0.59 Ac. PB 28-49A OR 57-233
- ⑧ 50-019158.0000 Par 11B 0.49 Ac. PB 28-49A DV 309-90
- ⑨ 50-019170.0000 Par 2 Ex Wpt 1.235 Ac. PB 10-24 OR 134-278
- ⑩ 50-019170.0100 Par 2 Wpt 0.165 Ac. PB 50-68 DV 429-232
- ⑪ 50-019190.0000 Par 3 0.25 Ac. PB 15-29 DV 368-299
- ⑫ 50-019190.0000 Par 3A 0.22 Ac. PB 16-17A DV 368-299
- ⑬ 50-019200.0000 Par 4 0.53 Ac. PB 16-17A DV 317-39
- ⑭ 50-020010.0000 Par 5 0.50 Ac. PB 16-36 OR 567-536
- ⑮ 50-020020.0000 Par 6 0.25 Ac. PB 17-42 OR 567-536
- ⑯ 50-020040.0200 Par 1 0.501 Ac. PB 64-29 OR 333-154
- ⑰ 50-020040.0300 Par 2 1.000 Ac. PB 64-29 OR 642-1869
- ⑱ 50-020040.0400 Par 3 1.000 Ac. PB 64-29 OR 485-190
- ⑲ 50-020040.0700 Par A 1.000 Ac. PB 66-76 OR 605-1052
- ⑳ 50-020050.0100 1.000 Ac. PB 63-159 OR 293-159
- ㉑ 50-020040.0611 0.434 Ac. PB 83-76

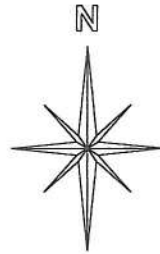


*This is a worksheet and is for location purposes only and cannot be guaranteed for accuracy. For more exact information, please CHECK deeds and plats on file in the Putnam County Recorders Office, Ottawa, Ohio.*

Revised 2015

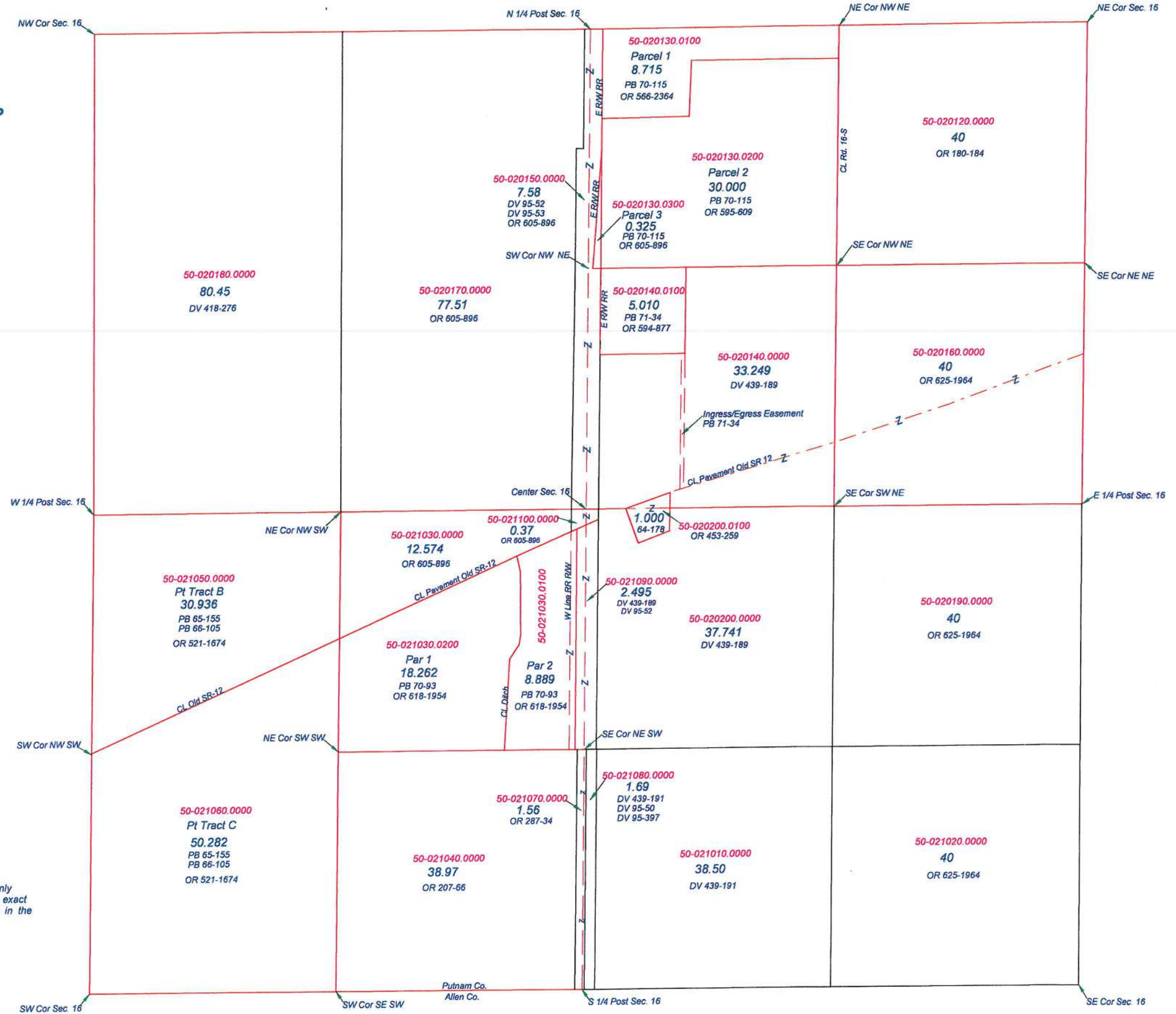


**SUGAR CREEK TOWNSHIP**  
T2S R6E  
SECTION 16



This is a worksheet and is for location purposes only and cannot be guaranteed for accuracy. For more exact information, please CHECK deeds and plats on file in the Putnam County Recorders Office, Ottawa, Ohio.

Revised 2013

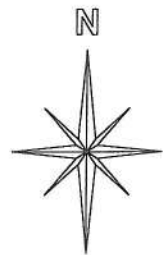




**SUGAR CREEK TOWNSHIP**

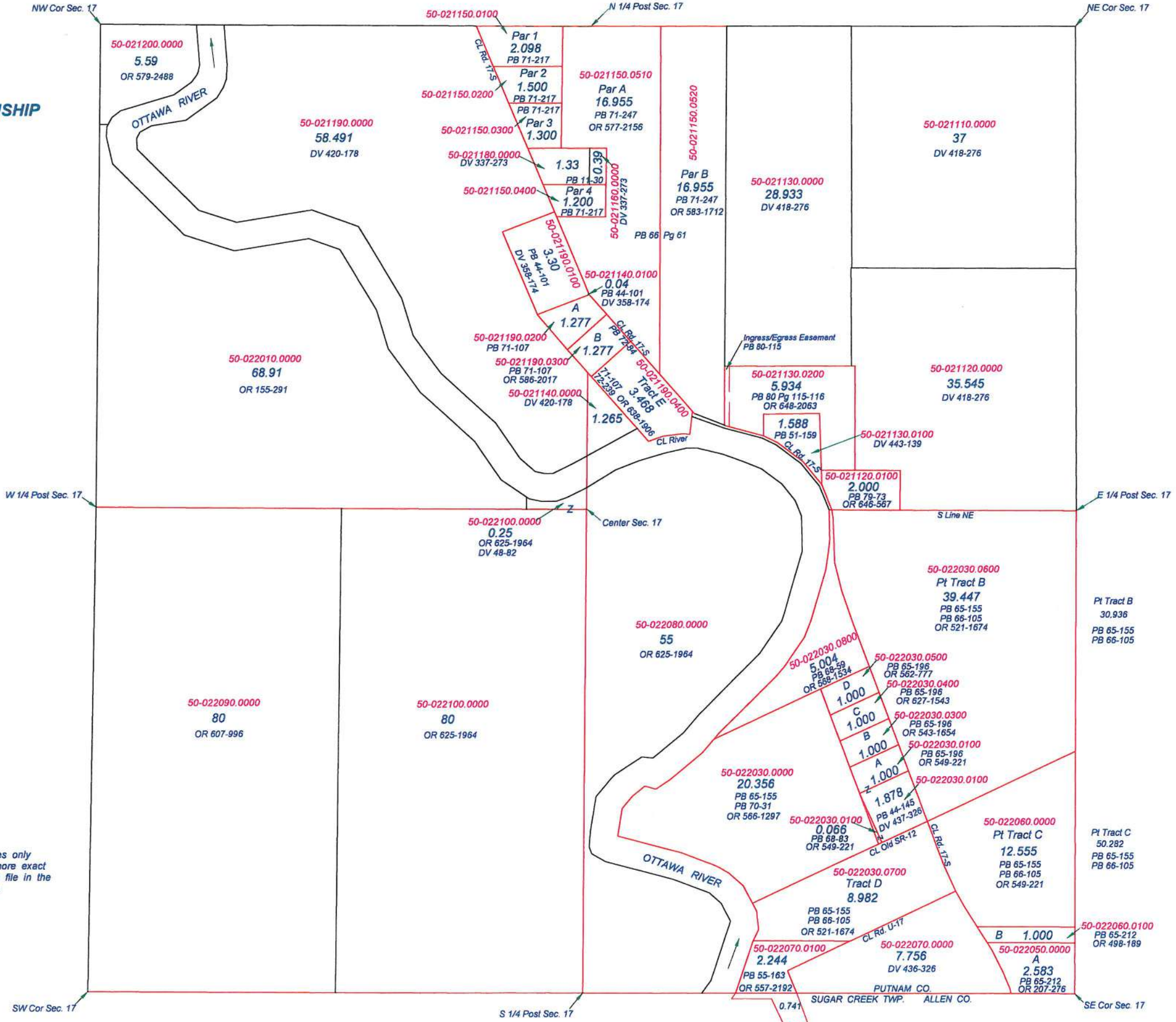
T1S R6E

SECTION 17



This is a worksheet and is for location purposes only and cannot be guaranteed for accuracy. For more exact information, please CHECK deeds and plats on file in the Putnam County Recorders Office, Ottawa, Ohio.

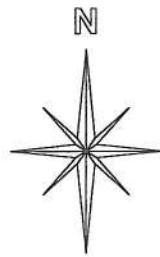
Revised 2013



PUTNAM CO. SUGAR CREEK TWP. ALLEN CO.

# SUGAR CREEK TOWNSHIP

T2S R6E  
SECTION 18



This is a worksheet and is for location purposes only and cannot be guaranteed for accuracy. For more exact information, please CHECK deeds and plats on file in the Putnam County Recorders Office, Ottawa, Ohio.

Revised 2013

