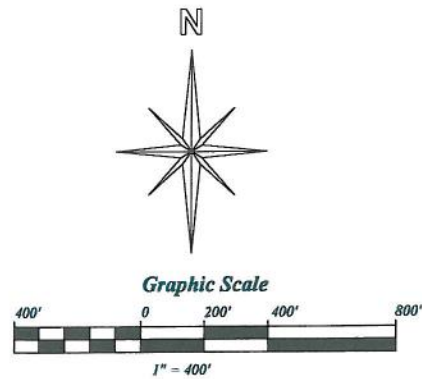
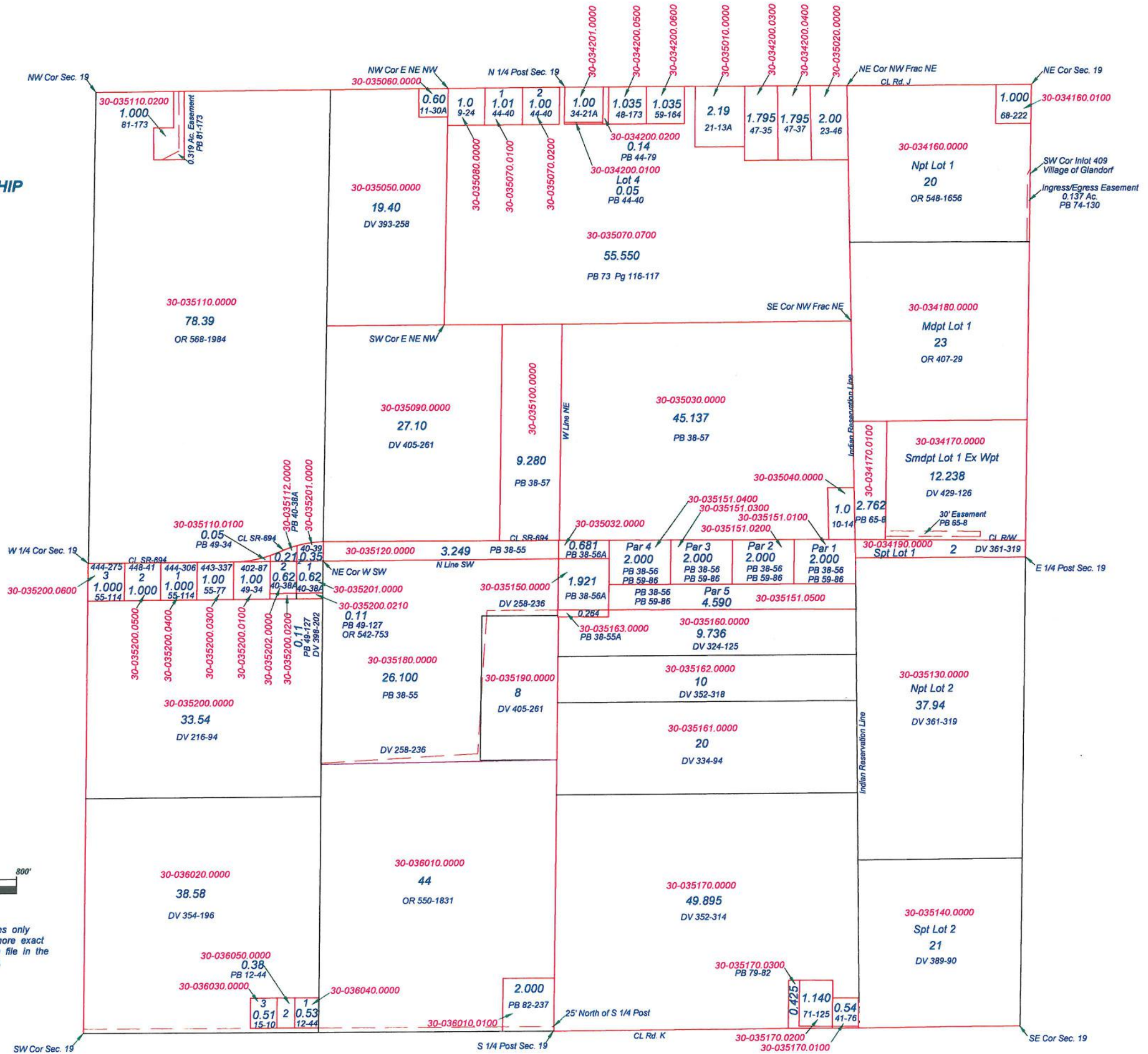


OTTAWA TOWNSHIP
T1N R7E
SECTION 19



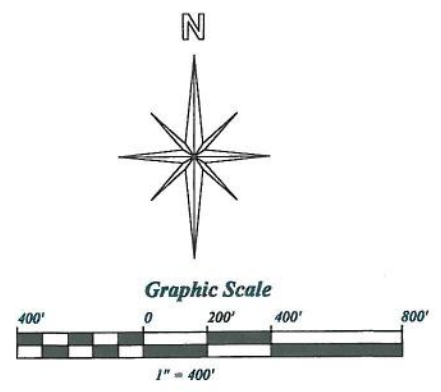
This is a worksheet and is for location purposes only and cannot be guaranteed for accuracy. For more exact information, please CHECK deeds and plats on file in the Putnam County Recorders Office, Ottawa, Ohio.

Revised 2015



OTTAWA TOWNSHIP
T1N R7E
SECTION 20

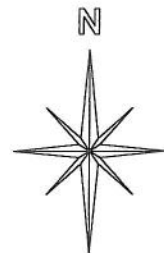
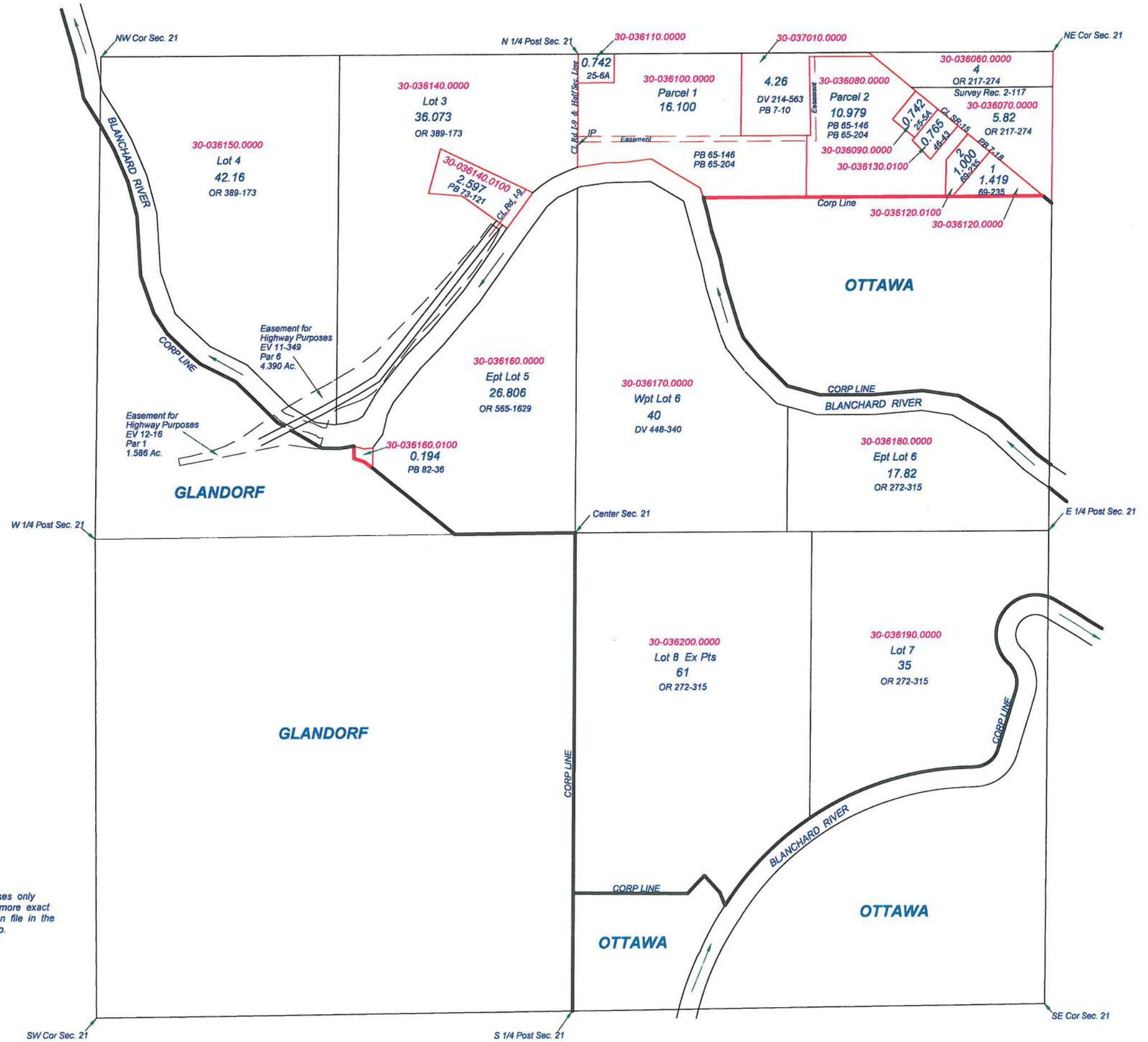
GLANDORF
All of Section 20



This is a worksheet and is for location purposes only and cannot be guaranteed for accuracy. For more exact information, please CHECK deeds and plats on file in the Putnam County Recorders Office, Ottawa, Ohio.

Revised 2008

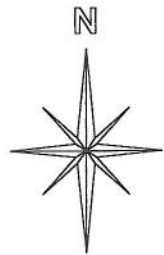
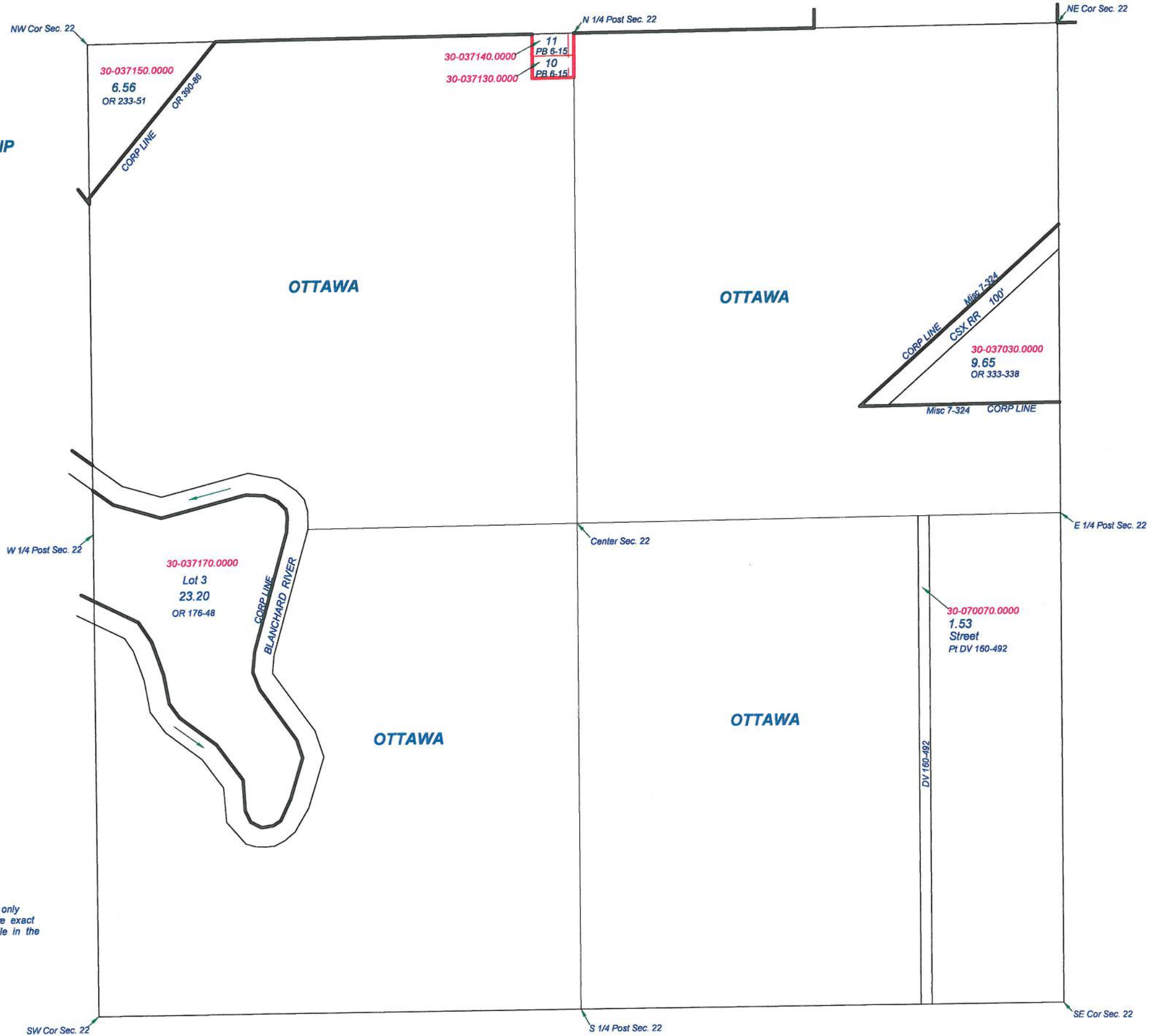
OTTAWA TOWNSHIP
T1N R7E
SECTION 21



This is a worksheet and is for location purposes only and cannot be guaranteed for accuracy. For more exact information, please CHECK deeds and plats on file in the Putnam County Recorders Office, Ottawa, Ohio.

Revised 2014

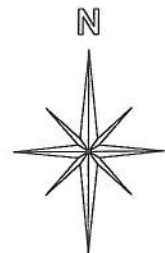
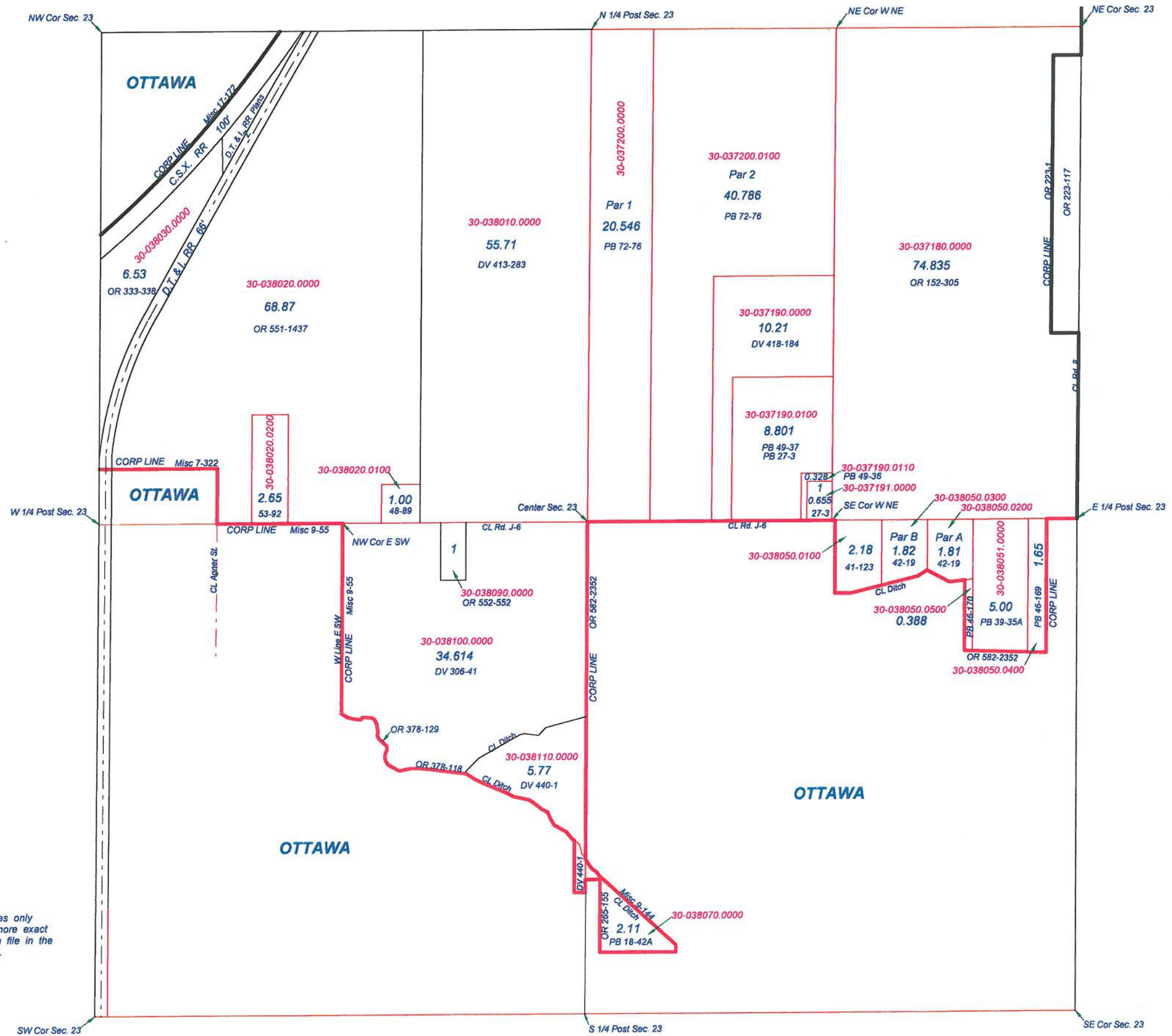
OTTAWA TOWNSHIP
T1N R7E
SECTION 22



This is a worksheet and is for location purposes only and cannot be guaranteed for accuracy. For more exact information, please CHECK deeds and plats on file in the Putnam County Recorders Office, Ottawa, Ohio.

Revised 2008

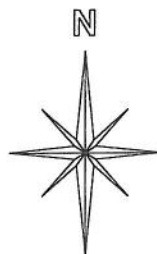
OTTAWA TOWNSHIP
T1N R7E
SECTION 23



This is a worksheet and is for location purposes only and cannot be guaranteed for accuracy. For more exact information, please CHECK deeds and plats on file in the Putnam County Recorders Office, Ottawa, Ohio.

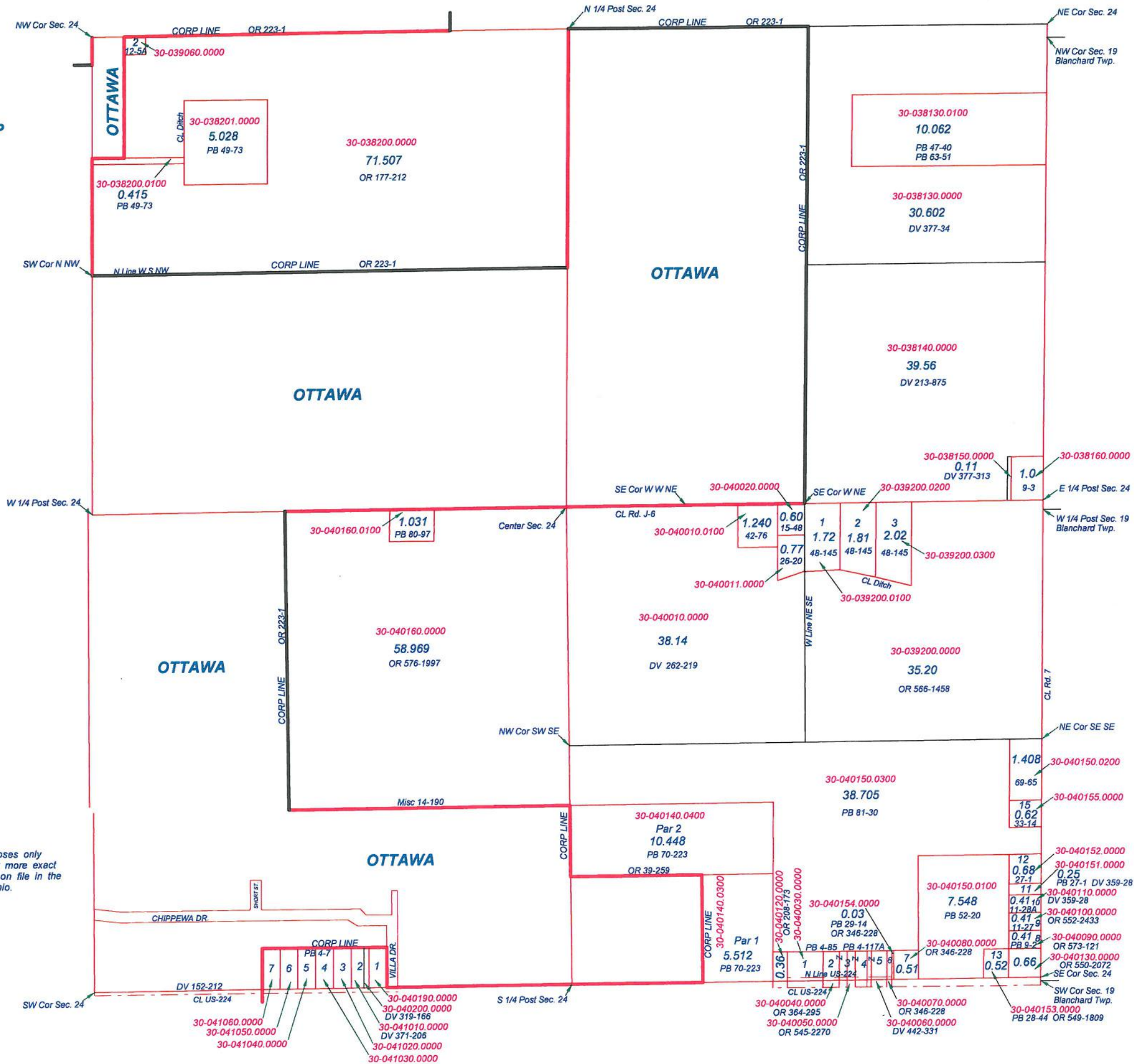
Revised 2008

OTTAWA TOWNSHIP
T1N R7E
SECTION 24



This is a worksheet and is for location purposes only and cannot be guaranteed for accuracy. For more exact information, please CHECK deeds and plats on file in the Putnam County Records Office, Ottawa, Ohio.

Revised 2013



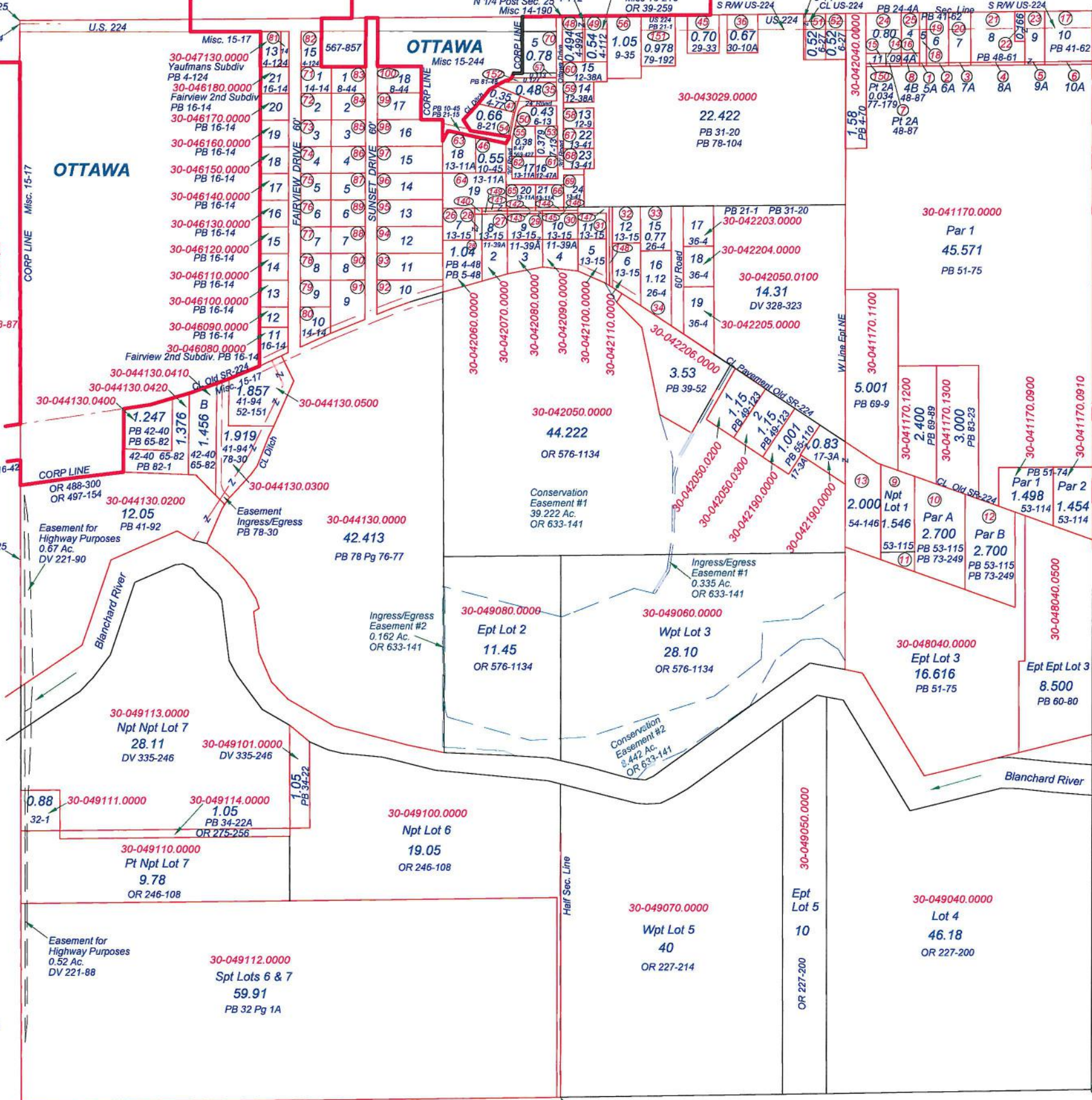
OTTAWA TOWNSHIP

T1N R7E

SECTION 25

- 30-044080.0000 Par 24 PB 13-41 OR 564-876
- 30-044120.0000 0.78 Ac. Lot 5 OR 554-881
- 30-045180.0000 Par 1 Fairview Subdiv PB 14-14
- 30-045190.0000 Par 2 Fairview Subdiv PB 14-14
- 30-045200.0000 Par 3 Fairview Subdiv PB 14-14
- 30-046010.0000 Par 4 Fairview Subdiv PB 14-14
- 30-046020.0000 Par 5 Fairview Subdiv PB 14-14
- 30-046030.0000 Par 6 Fairview Subdiv PB 14-14
- 30-046040.0000 Par 7 Fairview Subdiv PB 14-14
- 30-046050.0000 Par 8 Fairview Subdiv PB 14-14
- 30-046060.0000 Par 9 Fairview Subdiv PB 14-14
- 30-046070.0000 Par 10 Fairview Subdiv PB 14-14
- 30-047140.0000 Lot 14 Wpt Yaufmans Subdiv PB 4-124 OR 540-2336
- 30-047150.0000 Lot 15 Yaufmans Subdiv PB 4-124 OR 570-1170
- 30-048050.0000 Par 1 Sunset Subdiv PB 8-44
- 30-048060.0000 Par 2 Sunset Subdiv PB 8-44
- 30-048070.0000 Par 3 Sunset Subdiv PB 8-44
- 30-048080.0000 Par 4 Sunset Subdiv PB 8-44
- 30-048090.0000 Par 5 Sunset Subdiv PB 8-44
- 30-048100.0000 Par 7 Sunset Subdiv PB 8-44
- 30-048110.0000 Par 6 Sunset Subdiv PB 8-44
- 30-048120.0000 Par 8 Sunset Subdiv PB 8-44

- 30-049020.0000 Par 18 Sunset Subdiv PB 8-44
- 30-042049.0100 Par 1 0.025 Ac. PB 74-85 PB 75-27
- 30-044030.0000 Par A 0.043 Ac. PB 76-62 PB 75-27
- 30-042049.0300 Par 3 0.048 Ac. PB 74-85 PB 75-27
- 30-042080.0000 Par 4 0.060 Ac. PB 74-85 PB 75-27
- 30-042049.0500 Par 5 0.048 Ac. PB 74-85 PB 75-27
- 30-042049.0600 Par 6 0.060 Ac. PB 74-85 PB 75-27
- 30-042049.0700 Par 7 0.024 Ac. PB 74-85 PB 75-27
- 30-042049.0800 Par 8 0.229 Ac. PB 74-85 PB 75-27
- 30-042049.0900 Par 9 0.136 Ac. PB 74-85 PB 75-27
- 30-042049.0210 Par B 0.043 Ac. PB 76-62 PB 75-27
- 30-042020.0000 Pt Par 2A 0.034 Ac. PB 77-179 PB 48-87
- 30-043029.0100 0.978 Ac. PB 79-192
- 30-043160.0100 0.127 Ac. PB 81-48



- 30-042030.0000 Par 5A PB 48-61
- 30-041170.0200 Par 6A PB 48-61
- 30-041170.0300 Par 7A PB 48-61
- 30-041170.0400 Par 8A PB 48-61
- 30-042010.0500 Par 9A PB 48-61
- 30-041170.0600 Par 10A PB 48-61
- 30-042030.0000 Par 2A PB 48-87
- 30-042030.0000 Par 4B PB 48-87
- 30-041170.1010 Npt Lot 1 1.546 Ac. PB 53-115
- 30-048041.0000 Par A 2.700 Ac. PB 73-249
- 30-048040.0100 Spt Lot 1 0.254 Ac. PB 53-115
- 30-048042.0000 Par B 2.700 Ac. PB 73-249
- 30-042190.0000 2.000 Ac. PB 54-146
- 30-042030.0000 Par 2 Ex Wpt 0.09 Ac. PB 20-62 OR 53-157
- 30-042020.0000 Par 2 Wpt 0.11 Ac. PB 20-62 OR 240-191
- 30-042030.0000 Par 4A 0.103 Ac. PB 24-4A
- 30-042010.0000 Lot 10 1.367 Ac. PB 41-62
- 30-042030.0000 Lot 5 0.191 Ac. PB 41-62
- 30-042010.0200 Lot 6 0.632 Ac. PB 41-62
- 30-042010.0300 Lot 7 0.632 Ac. PB 41-62
- 30-042010.0400 Lot 8 Ex NEpt 1.378 Ac. PB 41-62
- 30-042010.0500 Lot 8 NEpt 0.166 Ac. PB 48-62
- 30-042010.0500 Lot 9 0.574 Ac. PB 41-62
- 30-042020.0000 0.80 Ac. OR 240-191
- 30-042030.0000 Par 4 0.413 Ac. PB 24-4A
- 30-042120.0000 Par 7 PB 13-15
- 30-042130.0000 Par 8 Ex Wpt DV 239-63 PB 13-15
- 30-042140.0000 Par 8 Wpt DV 237-352 PB 13-15
- 30-042080.0000 Par 9 PB 13-15
- 30-042160.0000 Par 10 PB 13-15
- 30-042170.0000 Par 11 PB 13-15
- 30-042180.0000 Par 12 PB 13-15
- 30-042201.0000 Par 15 0.77 Ac. PB 26-4
- 30-042202.0000 Par 16 1.12 Ac. PB 26-4
- 30-043010.0000 0.48 Ac. OR 563-636
- 30-043031.0000 0.67 Ac. PB 30-10A
- 30-043041.0000 0.70 Ac. PB 29-33
- 30-043050.0000 0.55 Ac. PB 10-45 OR 574-2022
- 30-043060.0000 0.35 Ac. PB 4-77 OR 573-611
- 30-043070.0000 0.544 Ac. PB 4-99 PB 4-112 DV 228-59 DV 179-328 DV 183-152 DV 183-156
- 30-043080.0000 0.543 Ac. PB 4-112 DV 406-171 OR 612-2275
- 30-043090.0000 0.43 Ac. PB 6-13 OR 568-1997
- 30-043100.0000 0.57 Ac. PB 6-27 PB 8-14 DV 340-69
- 30-043110.0000 0.52 Ac. PB 6-27 DV 367-179
- 30-043120.0000 0.379 Ac. PB 7-13 OR 545-142
- 30-043130.0000 0.66 Ac. PB 8-21 DV 217-751
- 30-043140.0000 0.388 Ac. PB 8-47 OR 569-427 DV 254-70
- 30-043150.0000 1.05 Ac. PB 9-35 DV 311-21
- 30-043160.0000 0.113 Ac. OR 554-881 PB 81-48
- 30-043170.0000 Par 13 0.34 Ac. PB 12-9 DV 207-260
- 30-043180.0000 Par 14 PB 12-38A DV 364-40
- 30-043190.0000 Par 15 PB 12-38A DV 364-38
- 30-043200.0000 Par 16 0.27 Ac. PB 12-47A DV 331-11
- 30-044010.0000 Par 17 PB 13-11A OR 526-1939
- 30-044020.0000 Par 18 PB 13-11A DV 209-323
- 30-044030.0000 Par 19 PB 13-11A DV 209-325
- 30-044040.0000 Par 20 PB 13-11A DV 381-305
- 30-044050.0000 Par 21 PB 13-11A DV 235-100
- 30-044060.0000 Par 22 PB 13-41 DV 386-157
- 30-044070.0000 Par 23 PB 13-41 OR 556-2201



This is a worksheet and is for location purposes only and cannot be guaranteed for accuracy. For more exact information, please CHECK deeds and plats on file in the Putnam County Recorders Office, Ottawa, Ohio.

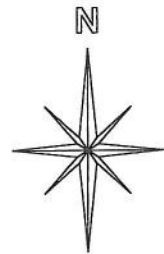
Revised 2014

- 30-048130.0000 Par 9 Sunset Subdiv PB 8-44
- 30-048140.0000 Par 10 Sunset Subdiv PB 8-44
- 30-048150.0000 Par 11 Sunset Subdiv PB 8-44
- 30-048160.0000 Par 12 Sunset Subdiv PB 8-44
- 30-048170.0000 Par 13 Sunset Subdiv PB 8-44
- 30-048180.0000 Par 14 Sunset Subdiv PB 8-44
- 30-048190.0000 Par 15 Sunset Subdiv PB 8-44
- 30-048200.0000 Par 16 Sunset Subdiv PB 8-44
- 30-049010.0000 Par 17 Sunset Subdiv PB 8-44

OTTAWA TOWNSHIP

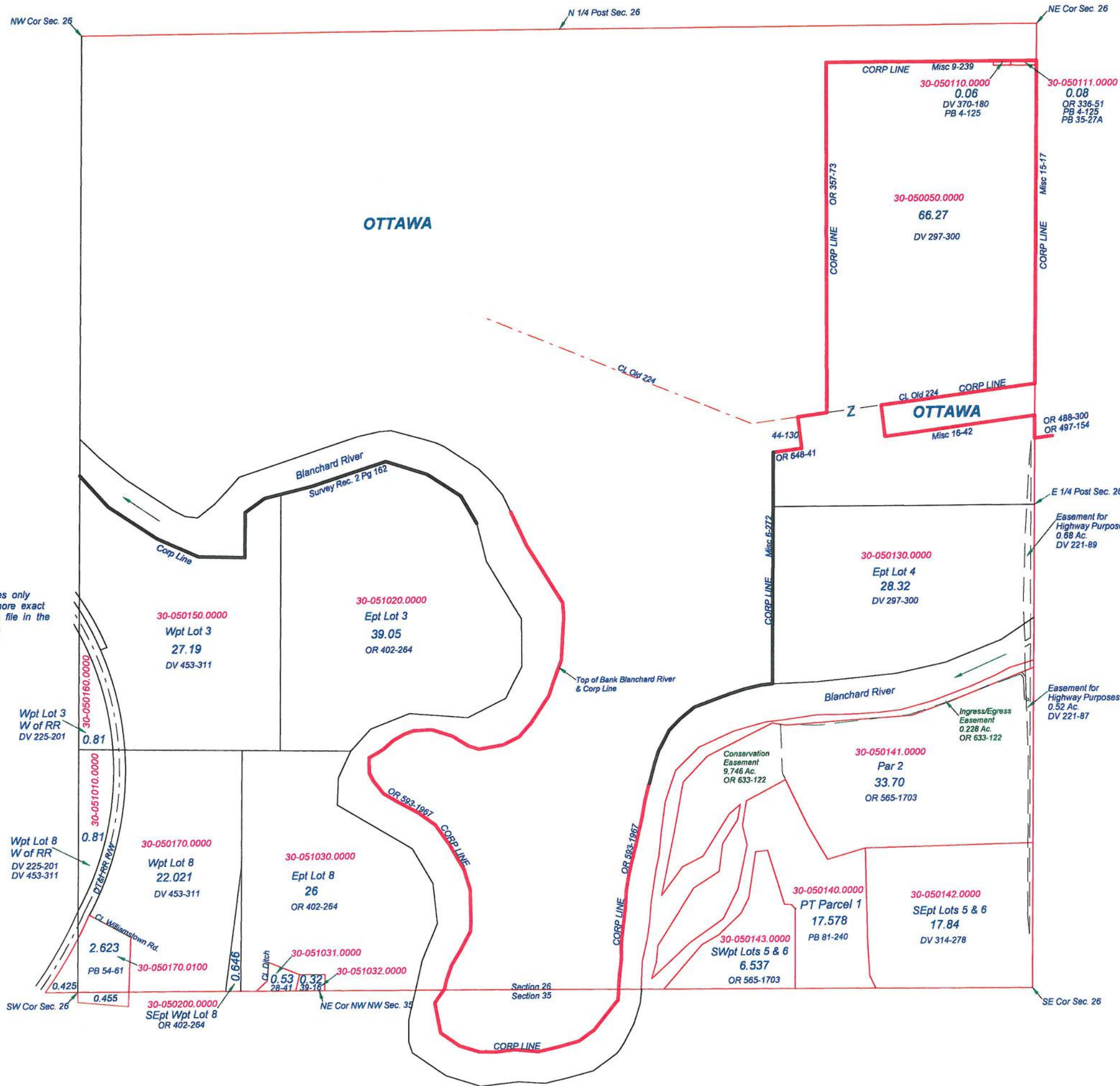
T1N R7E

SECTION 26

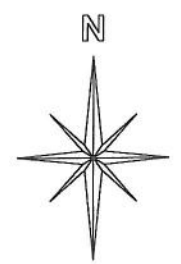
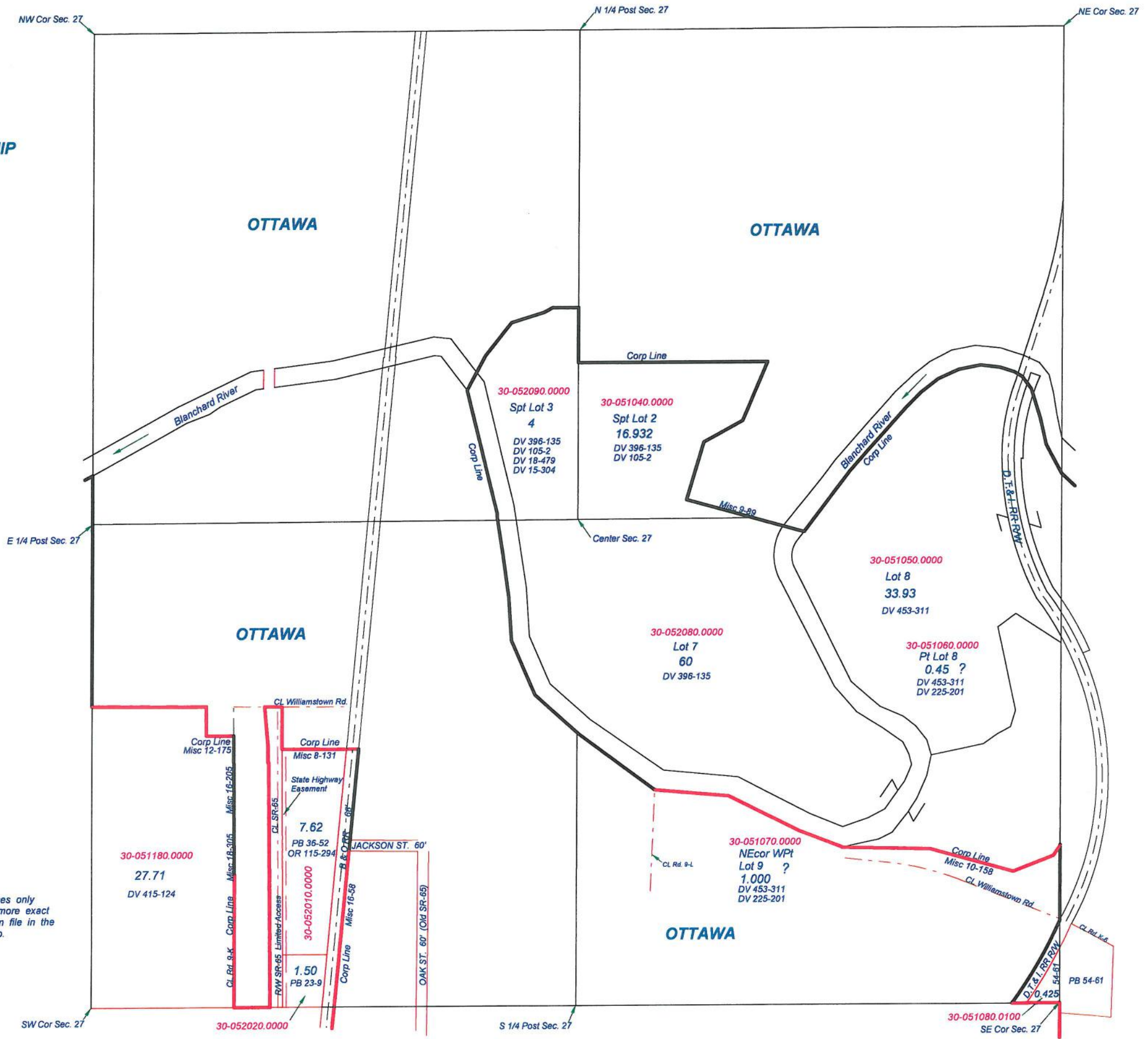


This is a worksheet and is for location purposes only and cannot be guaranteed for accuracy. For more exact information, please CHECK deeds and plats on file in the Putnam County Recorders Office, Ottawa, Ohio.

Revised 2014



OTTAWA TOWNSHIP
T1N R7E
SECTION 27



This is a worksheet and is for location purposes only and cannot be guaranteed for accuracy. For more exact information, please CHECK deeds and plats on file in the Putnam County Recorders Office, Ottawa, Ohio.
Revised 2008

30-052090.0000
Spt Lot 3
4
DV 396-135
DV 105-2
DV 18-479
DV 15-304

30-051040.0000
Spt Lot 2
16.932
DV 396-135
DV 105-2

30-051050.0000
Lot 8
33.93
DV 453-311

30-052080.0000
Lot 7
60
DV 396-135

30-051060.0000
Pt Lot 8
0.45 ?
DV 453-311
DV 225-201

30-051180.0000
27.71
DV 415-124

7.62
PB 36-52
OR 115-294

1.50
PB 23-9

30-051070.0000
NEcor WPt
Lot 9
?
1,000
DV 453-311
DV 225-201

30-051080.0100
0.425

PB 54-61

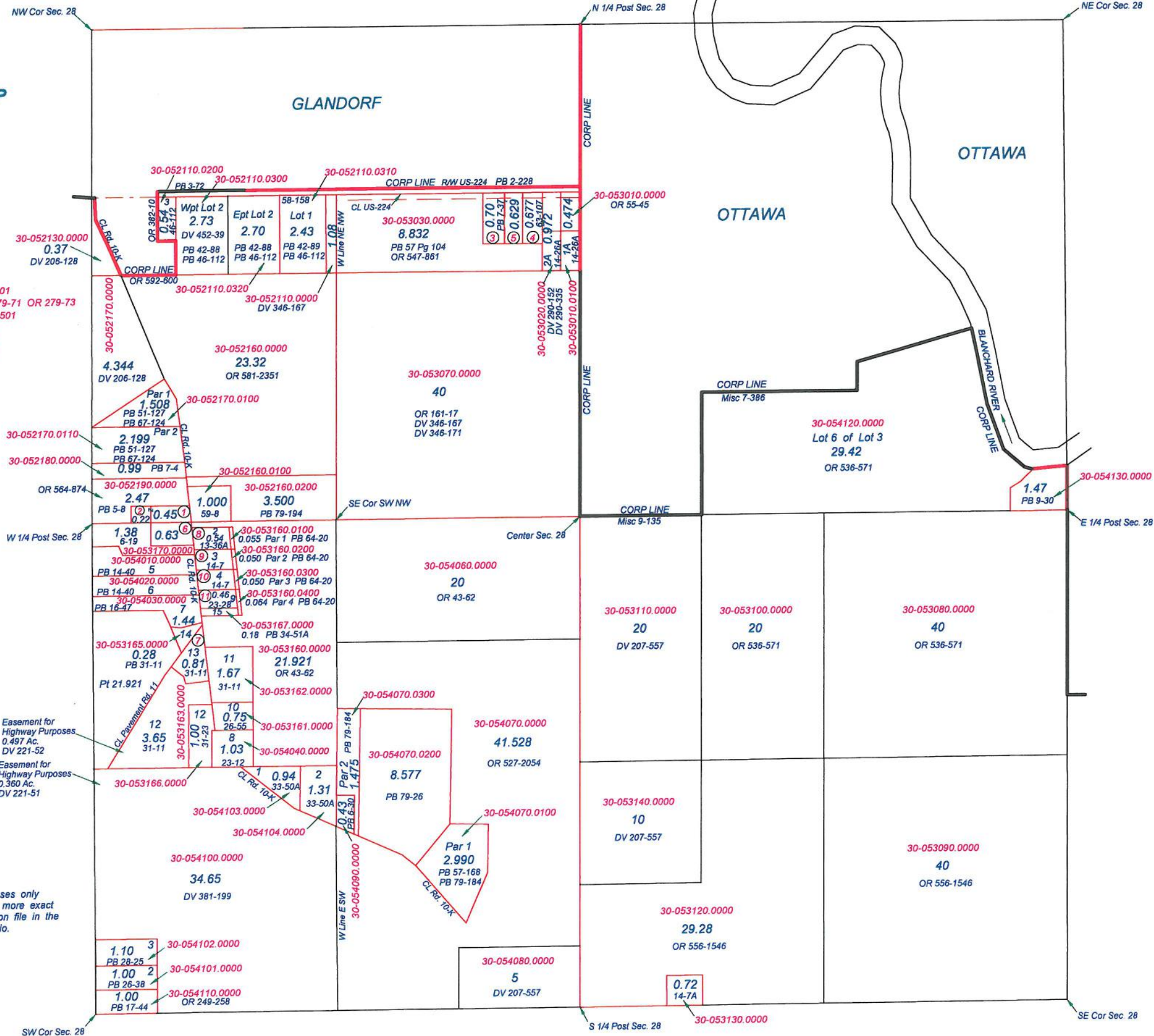
OTTAWA TOWNSHIP

T1N R7E
SECTION 28

GLANDORF

OTTAWA

- ① 30-052150.0000 0.45 Ac. OR 161-55
- ② 30-052150.0000 0.22 Ac. PB 7-35
- ③ 30-053040.0000 0.70 Ac. PB 7-37 OR 578-501
- ④ 30-053050.0000 0.677 Ac. PB 63-107 OR 279-71 OR 279-73
- ⑤ 30-053060.0000 0.629 Ac. PB 7-37 OR 578-501
- ⑥ 30-053150.0000 0.63 Ac. OR 163-92
- ⑦ 30-053164.0000 0.81 Ac. Par 13 PB 31-11
- ⑧ 30-053180.0000 0.54 Ac. Par 2 PB 13-36A
- ⑨ 30-053190.0000 Par 3 PB 14-7
- ⑩ 30-053200.0000 Par 4 PB 14-7
- ⑪ 30-054050.0000 Par 9 PB 23-28



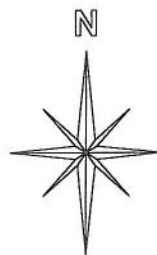
This is a worksheet and is for location purposes only and cannot be guaranteed for accuracy. For more exact information, please CHECK deeds and plats on file in the Putnam County Recorders Office, Ottawa, Ohio.

Revised 2012

OTTAWA TOWNSHIP

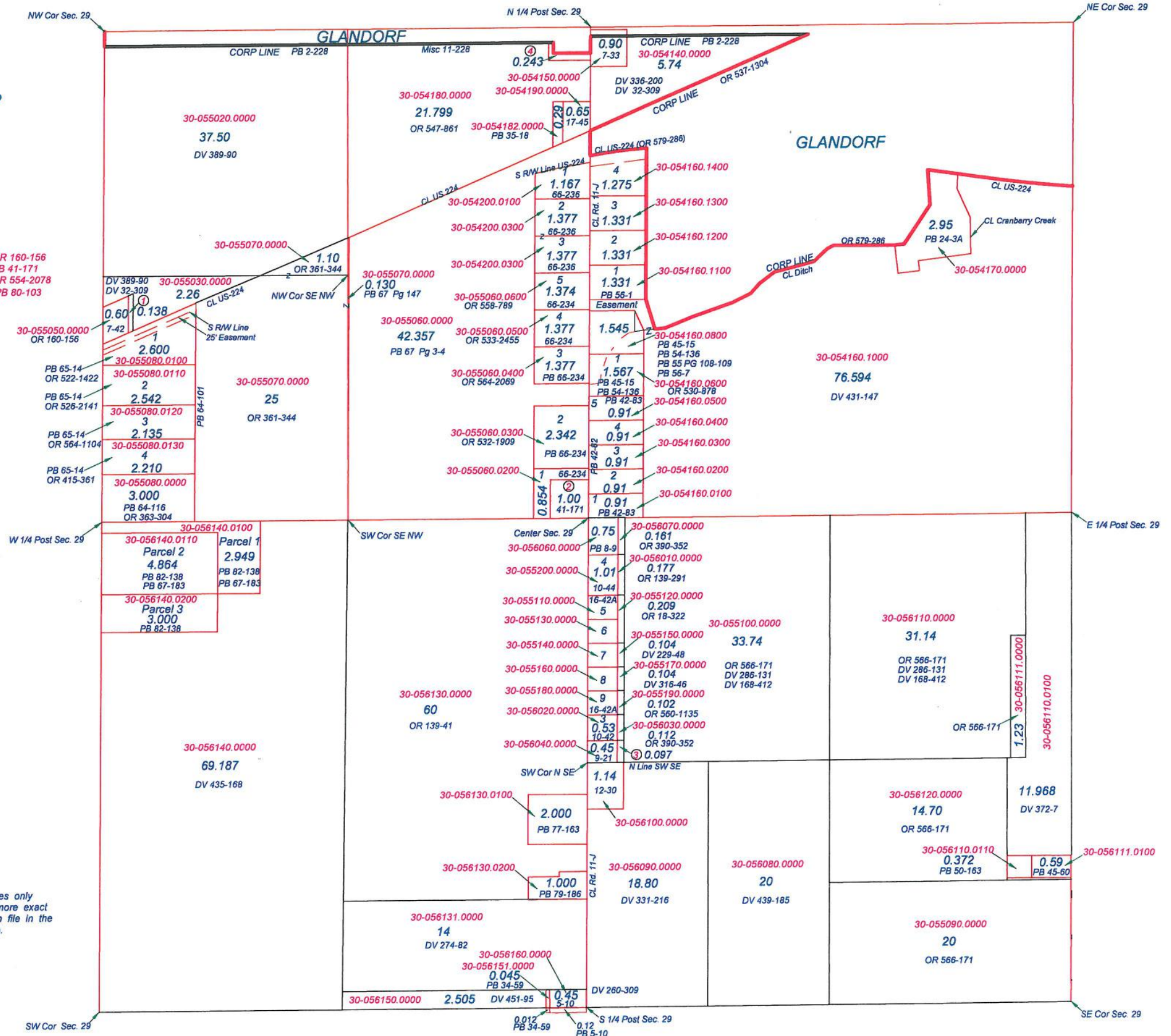
T1N R7E
SECTION 29

- ① 30-055040.0000 0.138 Ac. OR 160-156
- ② 30-055060.0100 1.000 Ac. PB 41-171
- ③ 30-056050.0000 0.097 Ac. OR 554-2078
- ④ 30-054180.0100 0.243 Ac. PB 80-103



This is a worksheet and is for location purposes only and cannot be guaranteed for accuracy. For more exact information, please CHECK deeds and plats on file in the Putnam County Recorders Office, Ottawa, Ohio.

Revised 2014

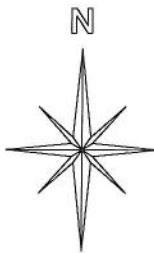


OTTAWA TOWNSHIP

T1N R7E

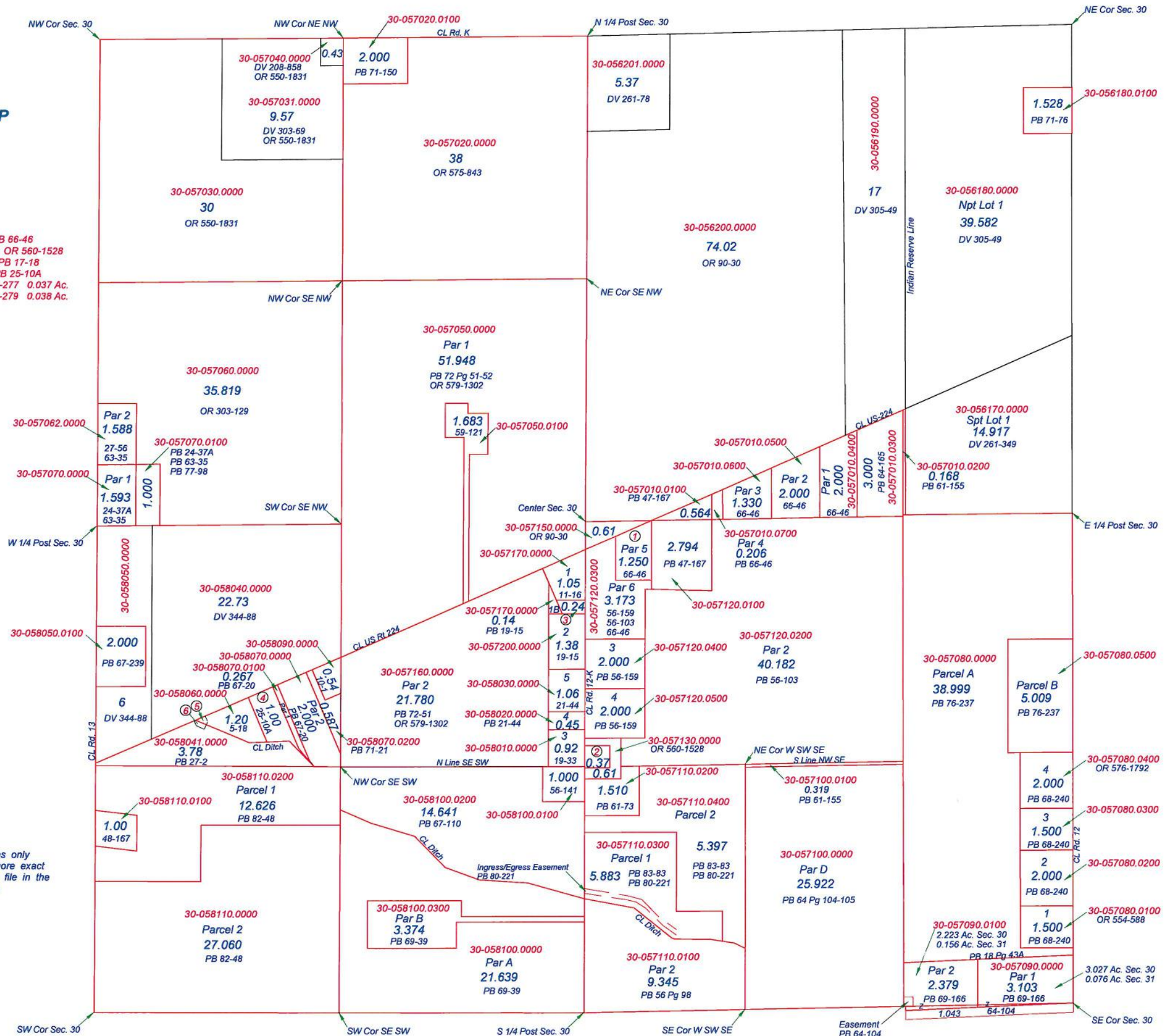
SECTION 30

- ① 30-057120.0000 Par 5 1.25 Ac. PB 66-46
- ② 30-057140.0000 0.37 Ac. PB 9-20 OR 560-1528
- ③ 30-057170.0000 Par 1A 0.24 Ac. PB 17-18
- ④ 30-058080.0000 Par 2 1.00 Ac. PB 25-10A
- ⑤ Easement for Highway Purposes EV 6-277 0.037 Ac.
- ⑥ Easement for Highway Purposes EV 6-279 0.038 Ac.



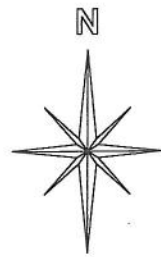
This is a worksheet and is for location purposes only and cannot be guaranteed for accuracy. For more exact information, please CHECK deeds and plats on file in the Putnam County Recorders Office, Ottawa, Ohio.

Revised 2015



OTTAWA TOWNSHIP

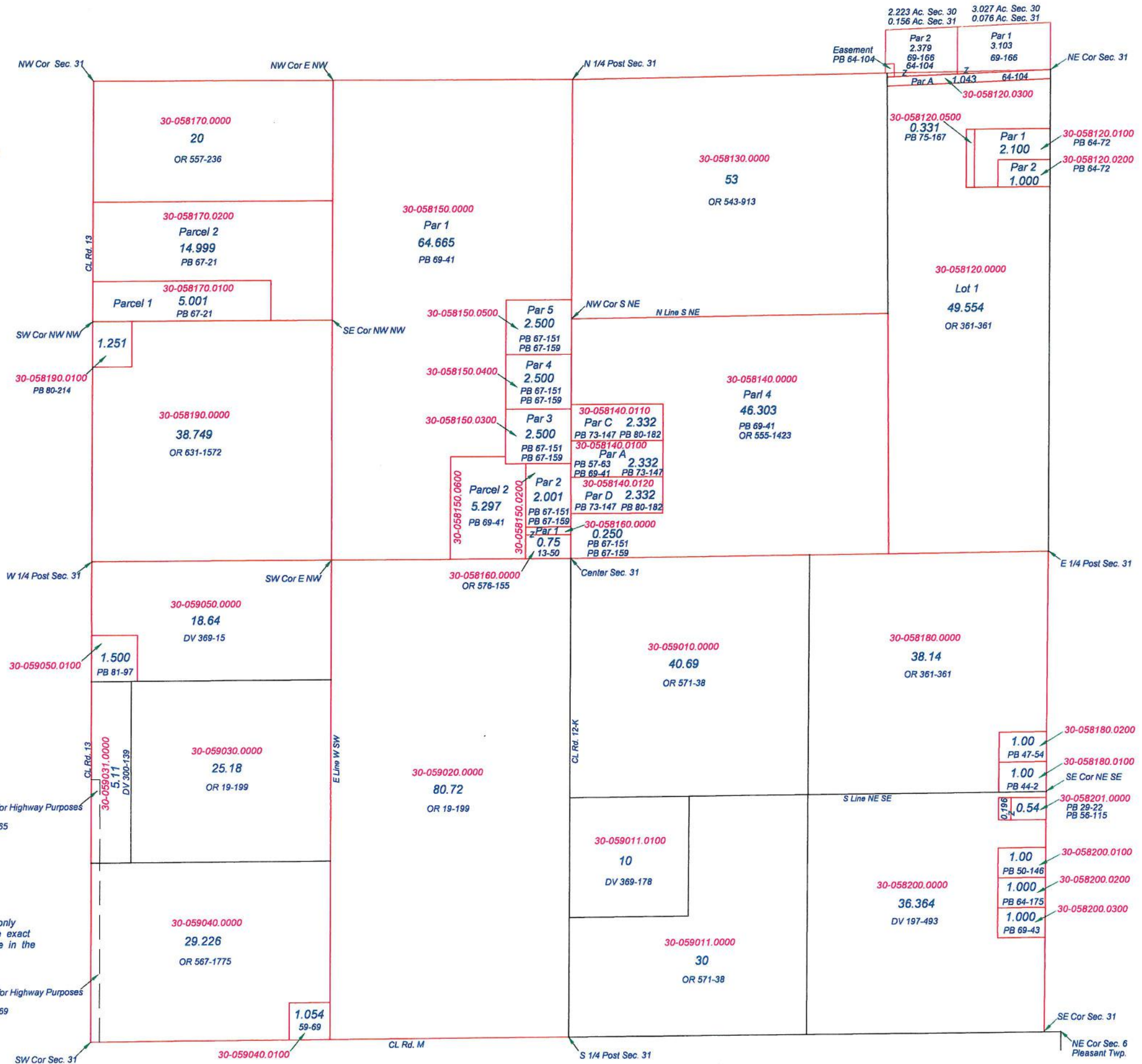
T1N R7E
SECTION 31



This is a worksheet and is for location purposes only and cannot be guaranteed for accuracy. For more exact information, please CHECK deeds and plats on file in the Putnam County Recorders Office, Ottawa, Ohio.

Revised 2014

Easement for Highway Purposes
1.132 Ac.
OR 642-1169

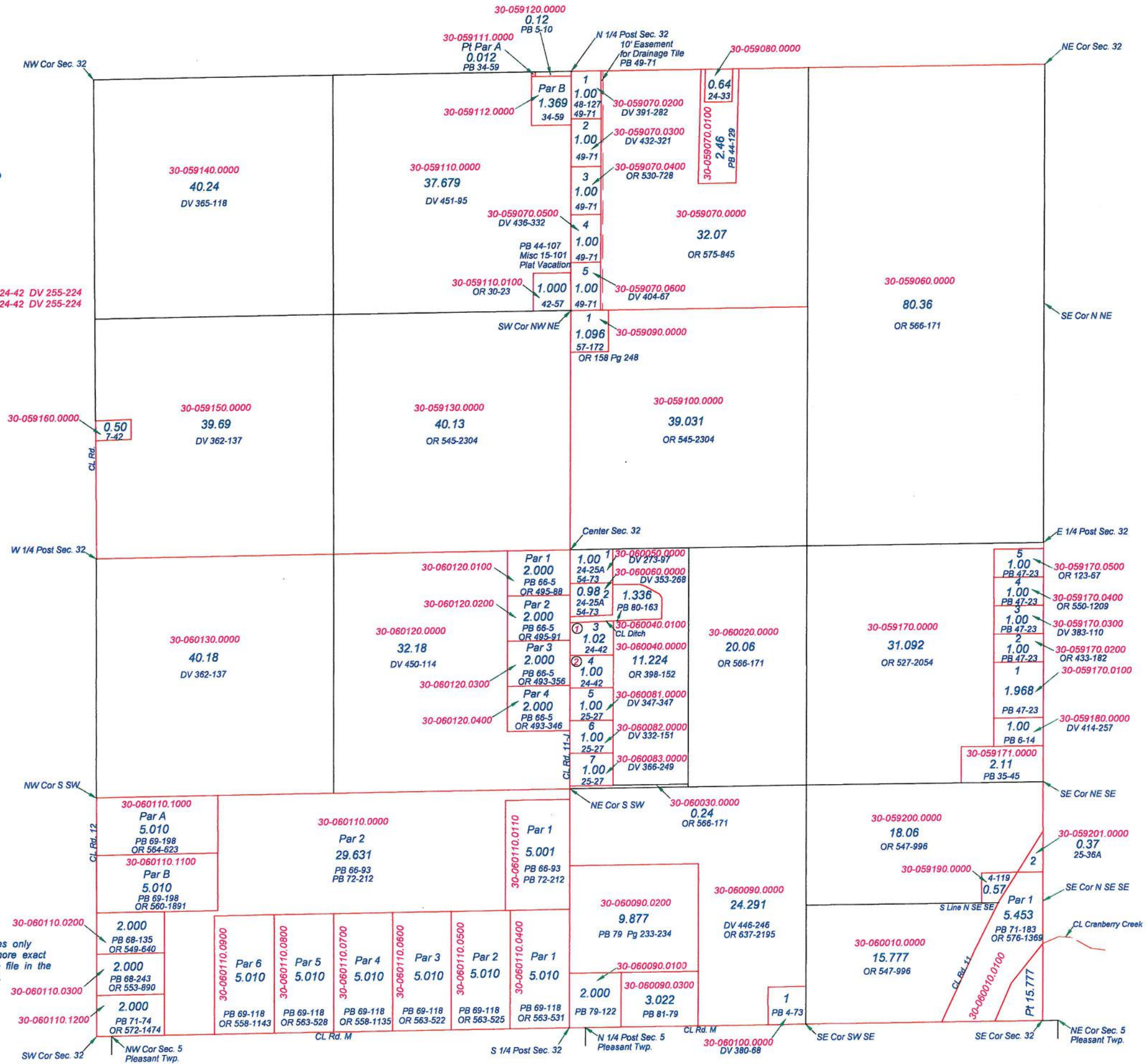


OTTAWA TOWNSHIP

T1N R7E

SECTION 32

- ① 30-060070.0000 Par 3 1.02 Ac. PB 24-42 DV 255-224
- ② 30-060080.0000 Par 4 1.00 Ac. PB 24-42 DV 255-224



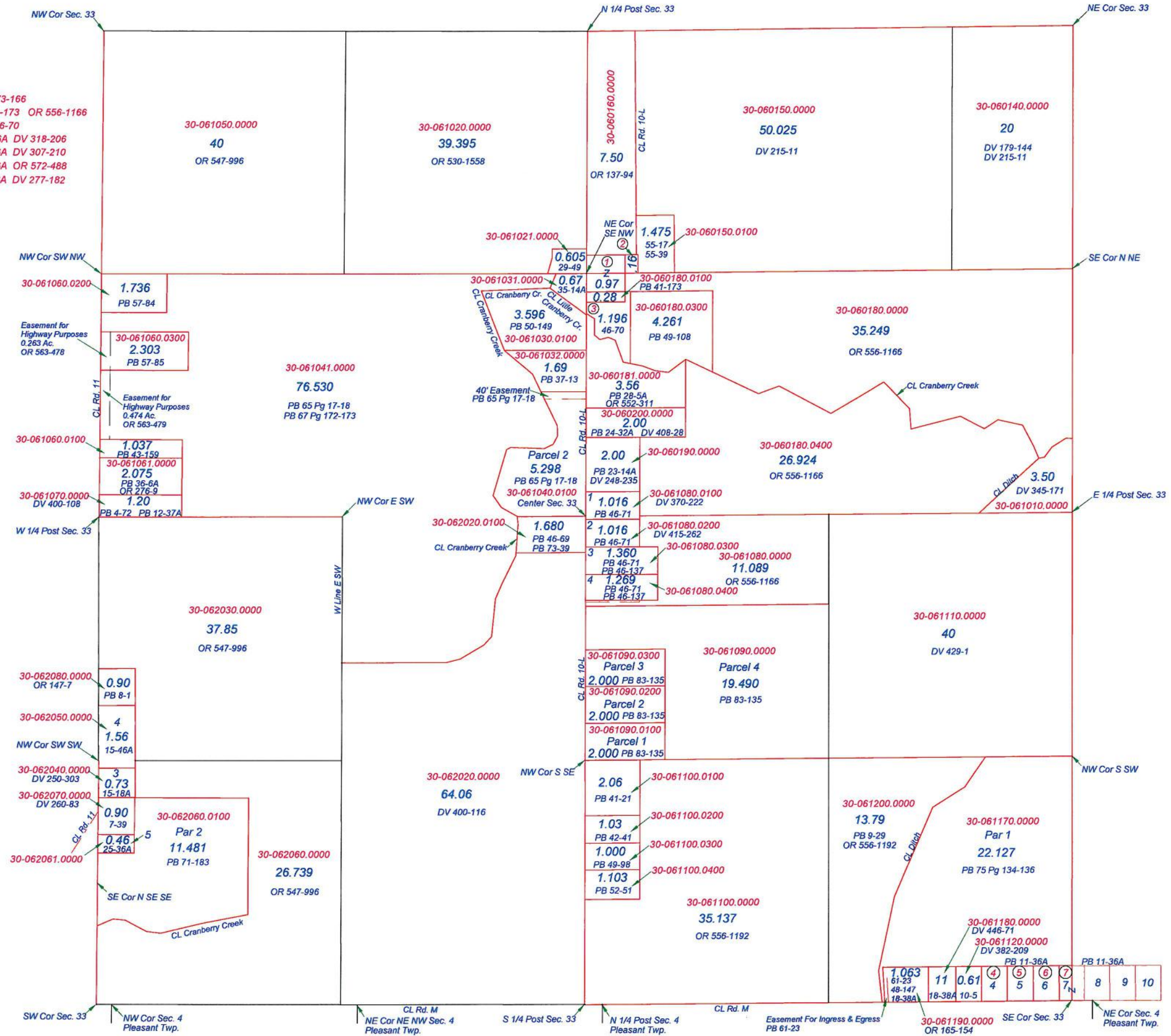
This is a worksheet and is for location purposes only and cannot be guaranteed for accuracy. For more exact information, please CHECK deeds and plats on file in the Putnam County Recorders Office, Ottawa, Ohio.

Revised 2013

OTTAWA TOWNSHIP

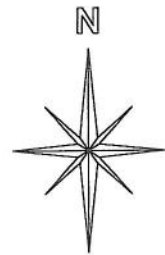
T1N R7E
SECTION 33

- ① 30-060170.0000 0.97 Ac. DV 273-166
- ② 30-060170.0100 0.16 Ac. PB 41-173 OR 556-1166
- ③ 30-060180.0200 1.196 Ac. PB 46-70
- ④ 30-061130.0000 Par 4 PB 11-36A DV 318-206
- ⑤ 30-061140.0000 Par 5 PB 11-36A DV 307-210
- ⑥ 30-061150.0000 Par 6 PB 11-36A OR 572-488
- ⑦ 30-061160.0000 Par 7 PB 11-36A DV 277-182



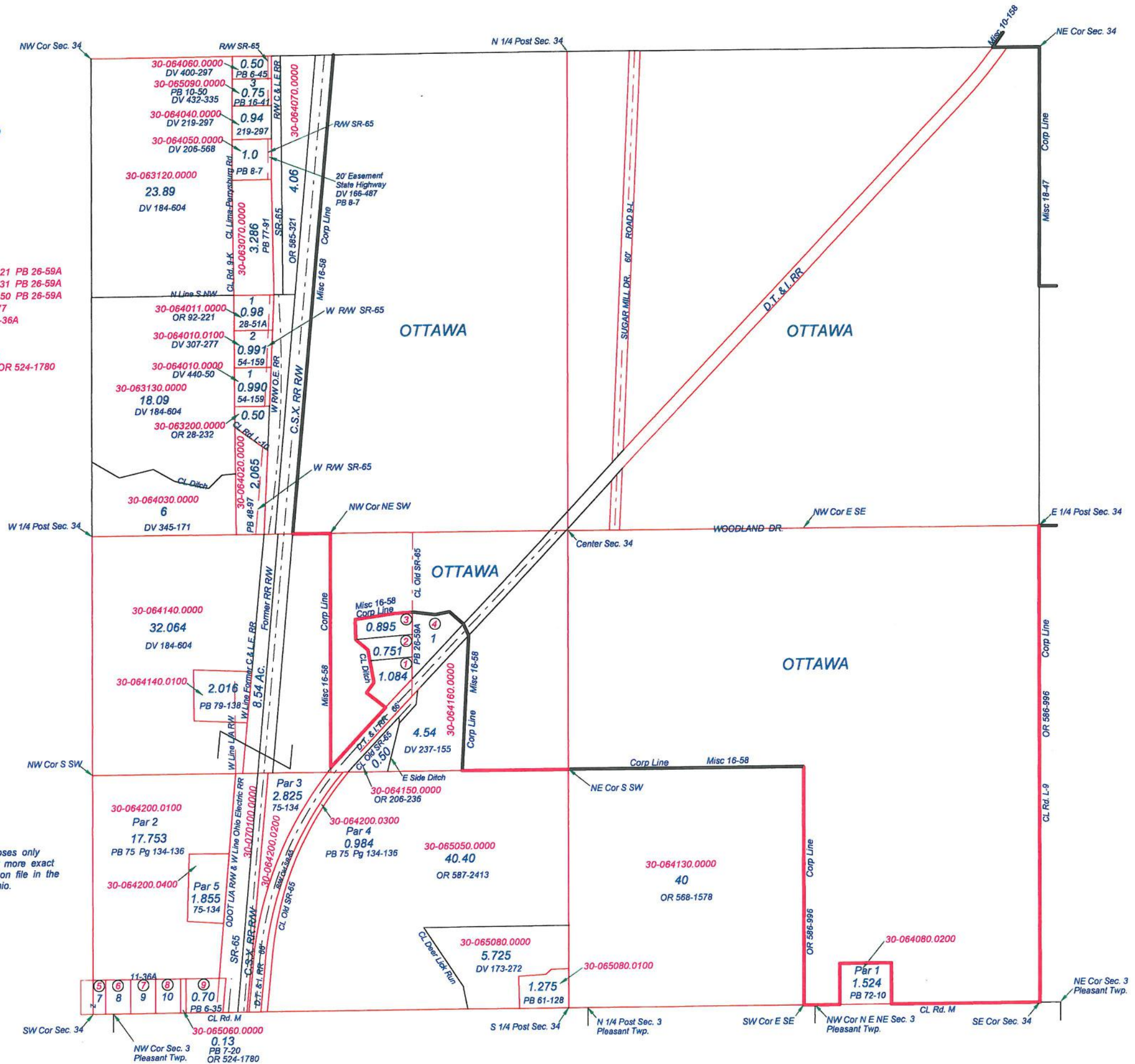
OTTAWA TOWNSHIP
T1N R7E
SECTION 34

- ① 30-064171.0000 1.084 Ac. DV 395-221 PB 26-59A
- ② 30-064172.0000 0.751 Ac. DV 403-331 PB 26-59A
- ③ 30-064173.0000 0.895 Ac. DV 342-150 PB 26-59A
- ④ 30-064180.0000 1 Ac. OR 538-2477
- ⑤ 30-061160.0000 Par 7 E 1/2 PB 11-36A
- ⑥ 30-065020.0000 Par 8 PB 11-36A
- ⑦ 30-065030.0000 Par 9 PB 11-36A
- ⑧ 30-065040.0000 Par 10 PB 11-36A
- ⑨ 30-065070.0000 0.70 Ac. PB 6-35 OR 524-1780



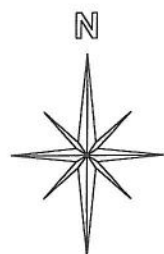
This is a worksheet and is for location purposes only and cannot be guaranteed for accuracy. For more exact information, please CHECK deeds and plats on file in the Putnam County Recorders Office, Ottawa, Ohio.

Revised 2012



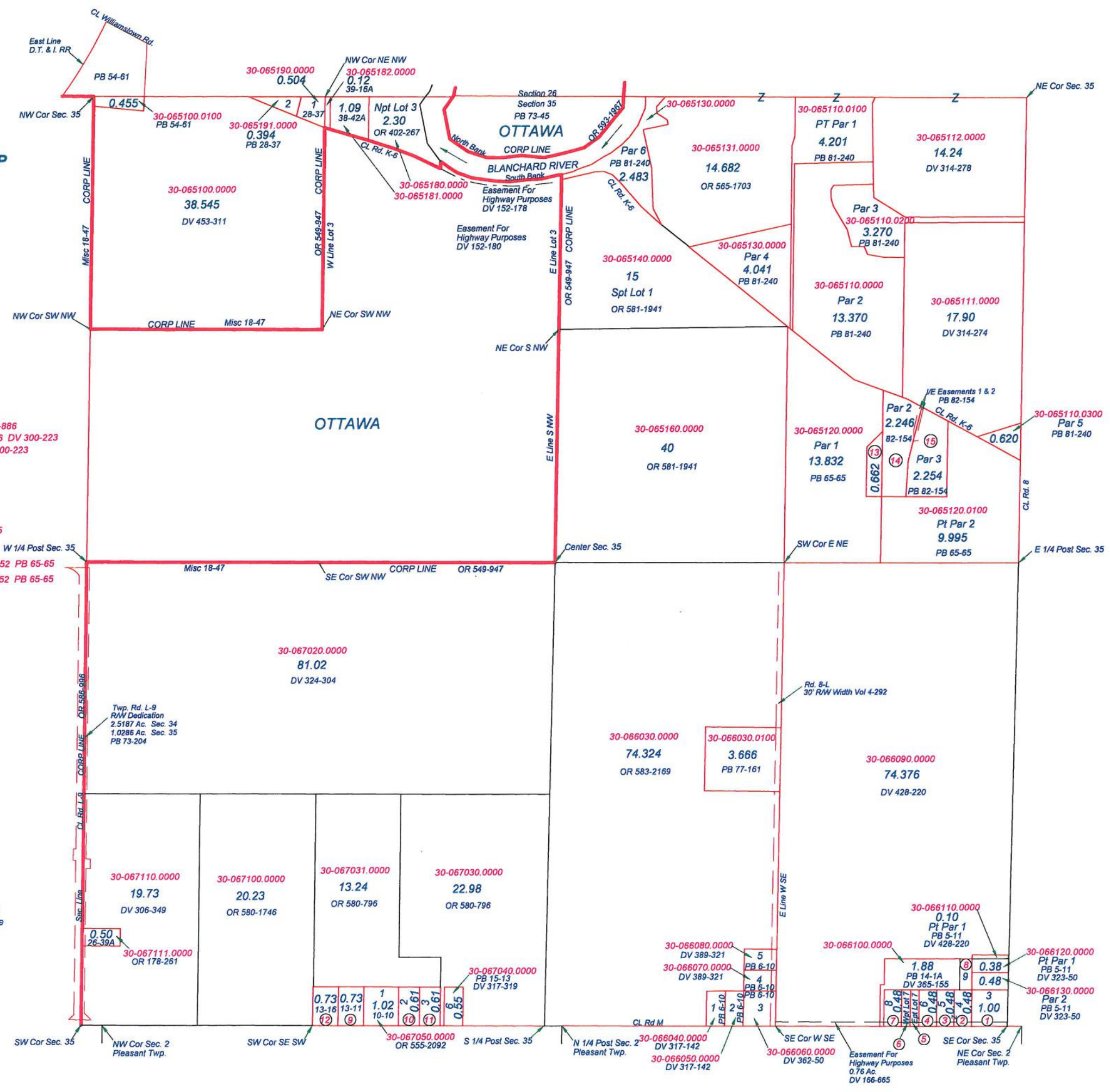
OTTAWA TOWNSHIP
T1N R7E
SECTION 35

- ① 30-066140.0000 1.00 Ac. Par 3 PB 5-11 OR 13-41
- ② 30-066150.0000 0.48 Ac. Par 4 PB 5-11 DV 446-345
- ③ 30-066150.0000 0.48 Ac. Par 5 PB 5-11 DV 446-345
- ④ 30-066170.0000 0.48 Ac. Par 6 PB 5-11 DV 213-886
- ⑤ 30-066180.0000 0.24 Ac. E 1/2 Par 7 PB 5-11 DV 213-886
- ⑥ 30-066190.0000 0.24 Ac. W 1/2 Par 7 PB 5-11 PB 7-16 DV 300-223
- ⑦ 30-066200.0000 0.48 Ac. Par 8 PB 5-11 PB 7-16 DV 300-223
- ⑧ 30-067010.0000 0.28 Ac. Par 9 PB 14-1A DV 323-50
- ⑨ 30-067060.0000 0.73 Ac. PB 13-11 DV 439-35
- ⑩ 30-067070.0000 0.61 Ac. PB 12-21A OR 49-72
- ⑪ 30-067080.0000 0.61 Ac. PB 12-34A DV 217-984
- ⑫ 30-067090.0000 0.73 Ac. PB 13-16 DV 267-237
- ⑬ 30-065120.0200 0.662 Ac. Par 1 PB 82-154 PB 65-65
- ⑭ 30-065120.0120 2.246 Ac. Par 2 PB 82-154 PB 68-152 PB 65-65
- ⑮ 30-065120.0110 2.254 Ac. Par 3 PB 82-154 PB 68-152 PB 65-65



This is a worksheet and is for location purposes only and cannot be guaranteed for accuracy. For more exact information, please CHECK deeds and plats on file in the Putnam County Recorders Office, Ottawa, Ohio.

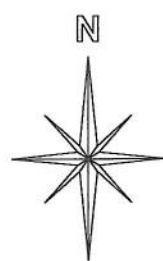
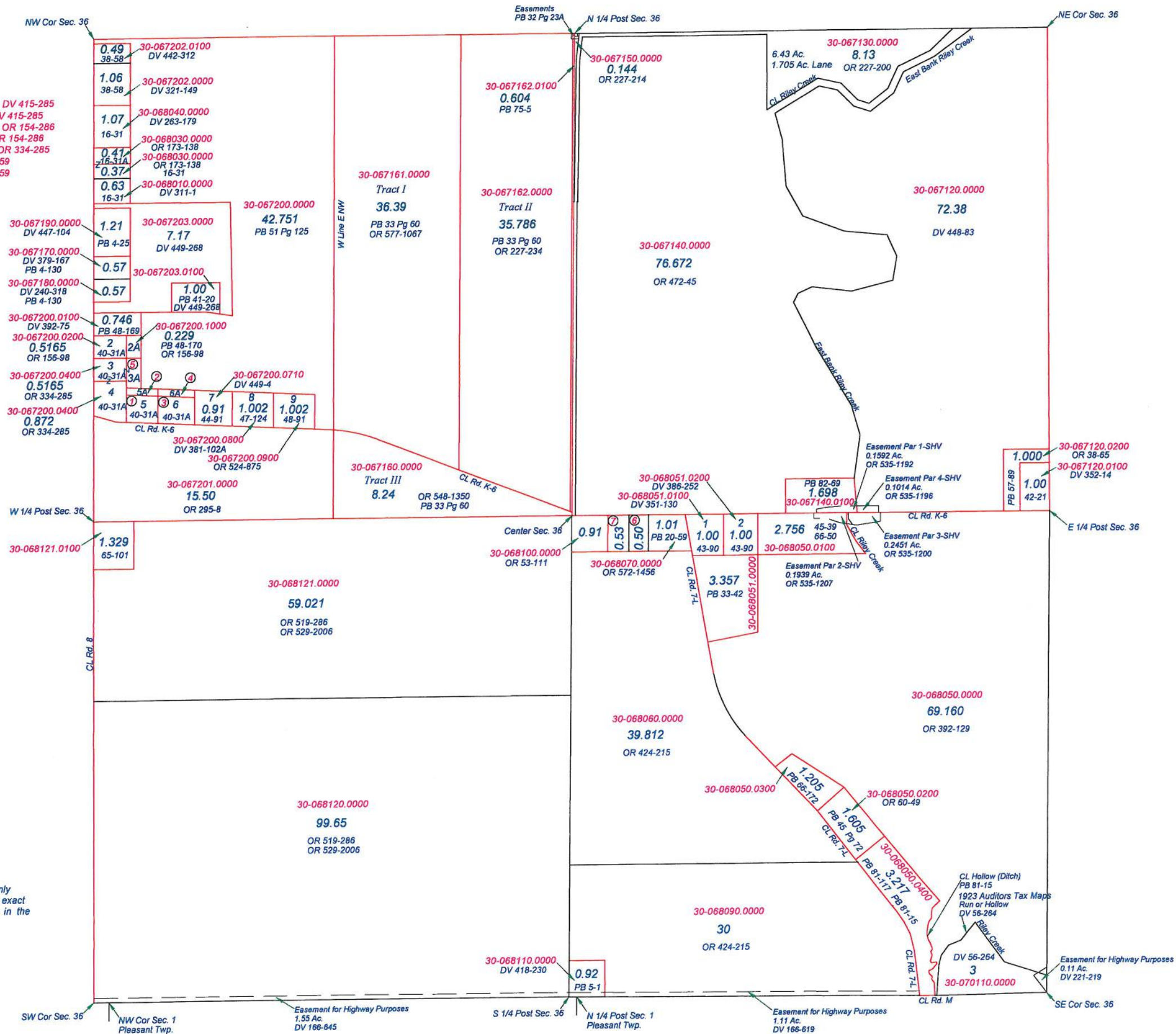
Revised 2014



OTTAWA TOWNSHIP

T1N R7E
SECTION 36

- ① 30-067200.0500 Lot 5 0.6026 Ac. PB 40-31A DV 415-285
- ② 30-067200.0510 Lot 5A 0.16 Ac. PB 43-35 DV 415-285
- ③ 30-067200.0600 Lot 6 0.7059 Ac. PB 40-31A OR 154-286
- ④ 30-067200.0610 Lot 6A 0.18 Ac. PB 44-63 OR 154-286
- ⑤ 30-067200.0400 Lot 3A 0.30 Ac. PB 48-171 OR 334-285
- ⑥ 30-068080.0000 0.50 Ac. DV 288-325 PB 20-59
- ⑦ 30-068081.0000 0.53 Ac. DV 360-309 PB 20-59



This is a worksheet and is for location purposes only and cannot be guaranteed for accuracy. For more exact information, please CHECK deeds and plats on file in the Putnam County Recorders Office, Ottawa, Ohio.

Revised 2014