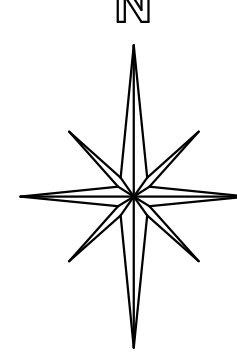


PERRY TOWNSHIP PUTNAM COUNTY, OHIO

STATE ROADS
COUNTY ROADS
TOWNSHIP ROADS

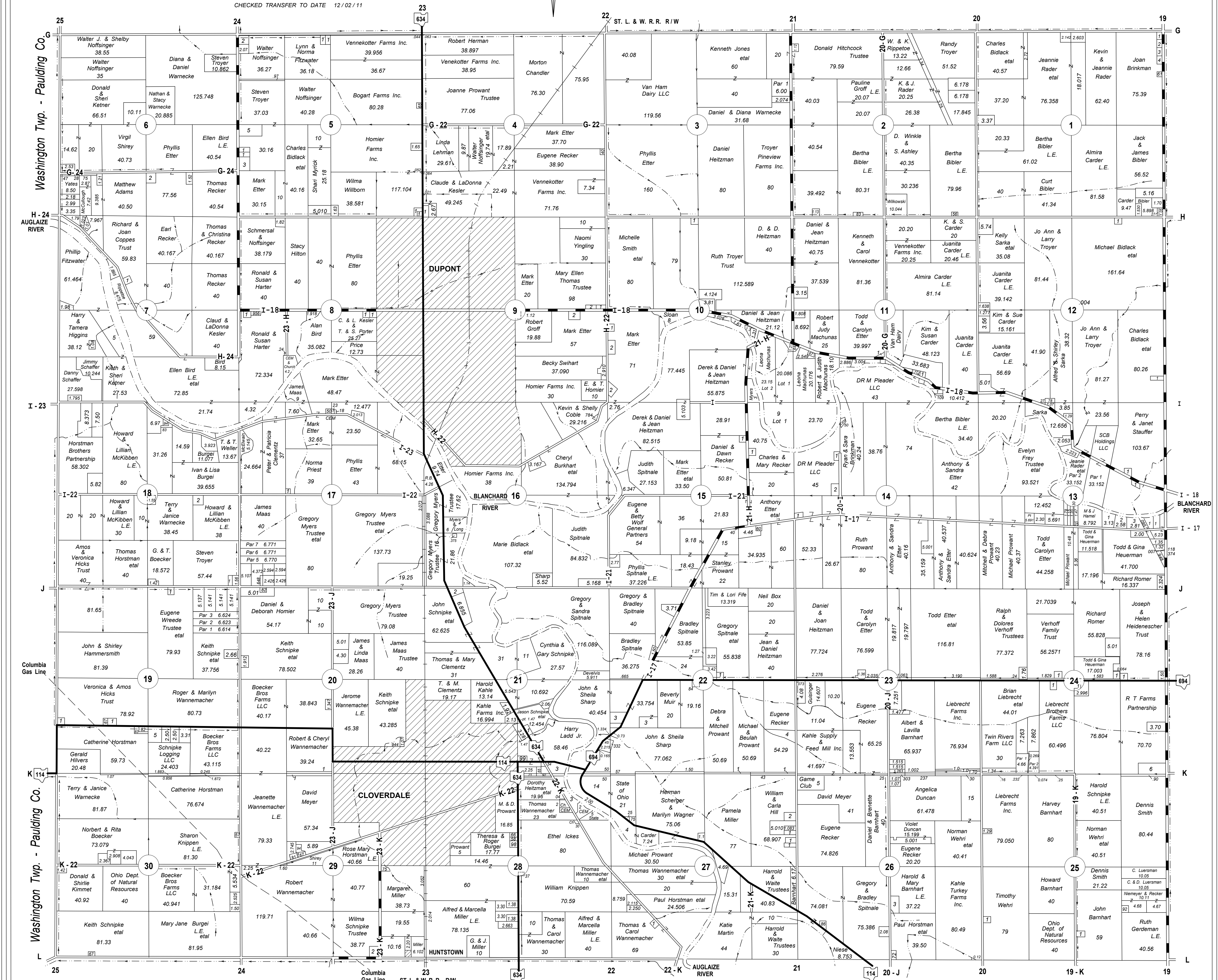
T1N-R5E
2012



TERRENCE R. RECKER COUNTY ENGINEER

SCALE: 1" = 1320'

CHECKED TRANSFER TO DATE 12/02/11



This plat is a copy and is for identification purposes only and cannot be guaranteed for accuracy. For more exact information please check deeds and plats on file in Putnam County Recorder's Office, Ottawa, Ohio.