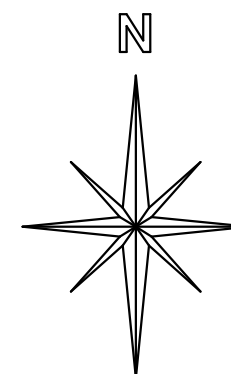


# MONROE TOWNSHIP PUTNAM COUNTY, OHIO

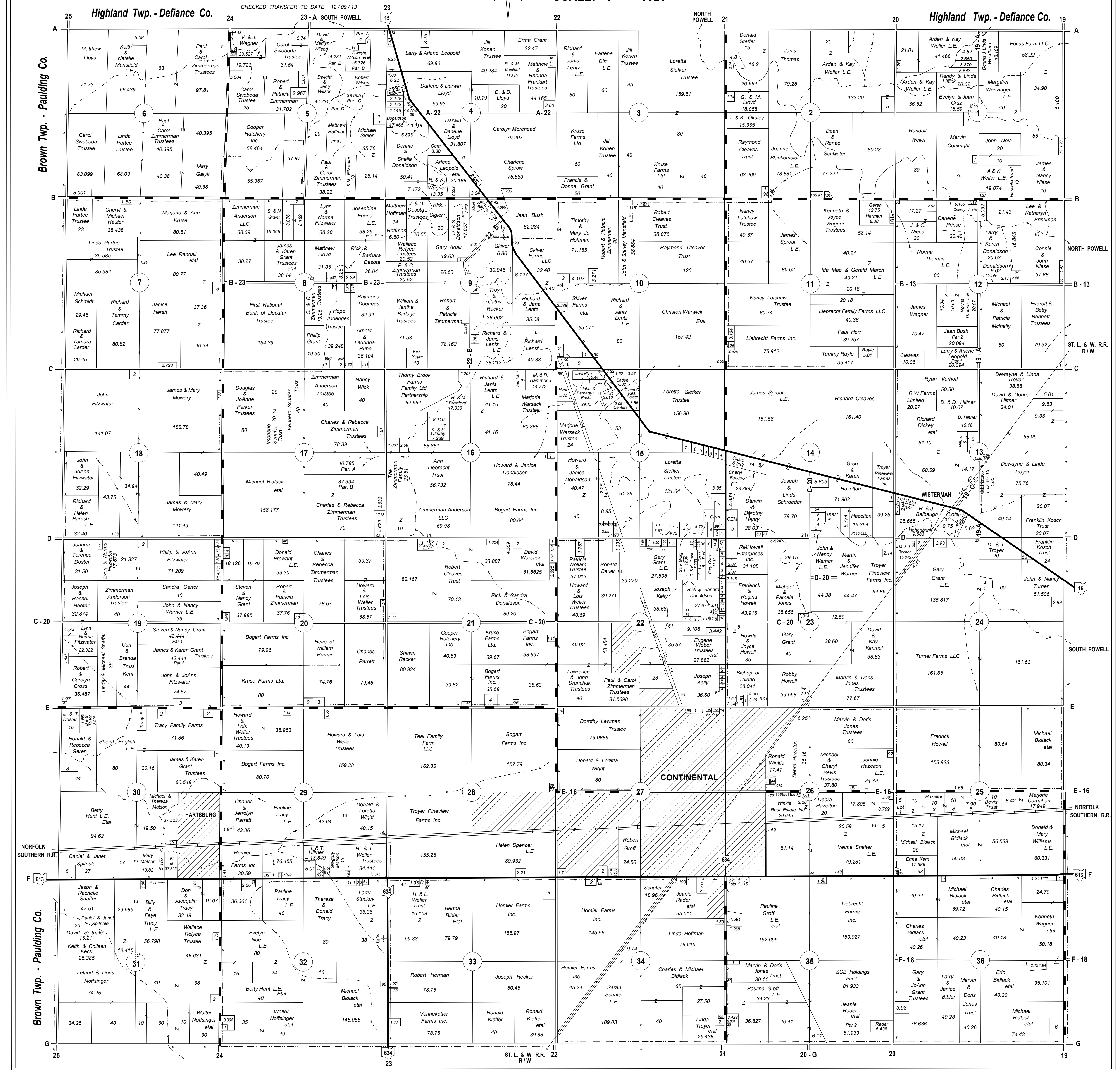
STATE ROADS  
COUNTY ROADS  
TOWNSHIP ROADS

T 2 N - R 5 E  
2014



TERRENCE R. RECKER COUNTY ENGINEER

SCALE: 1" = 1320'



This plat is a copy and is for identification purposes only and cannot be guaranteed for accuracy. For more exact information please CHECK deeds and plats on file in Putnam County Recorders Office, Otwa, Ohio.