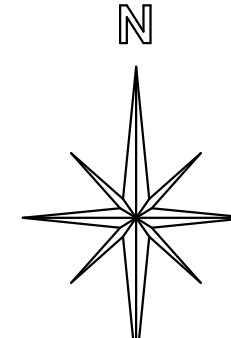


MONROE TOWNSHIP PUTNAM COUNTY, OHIO

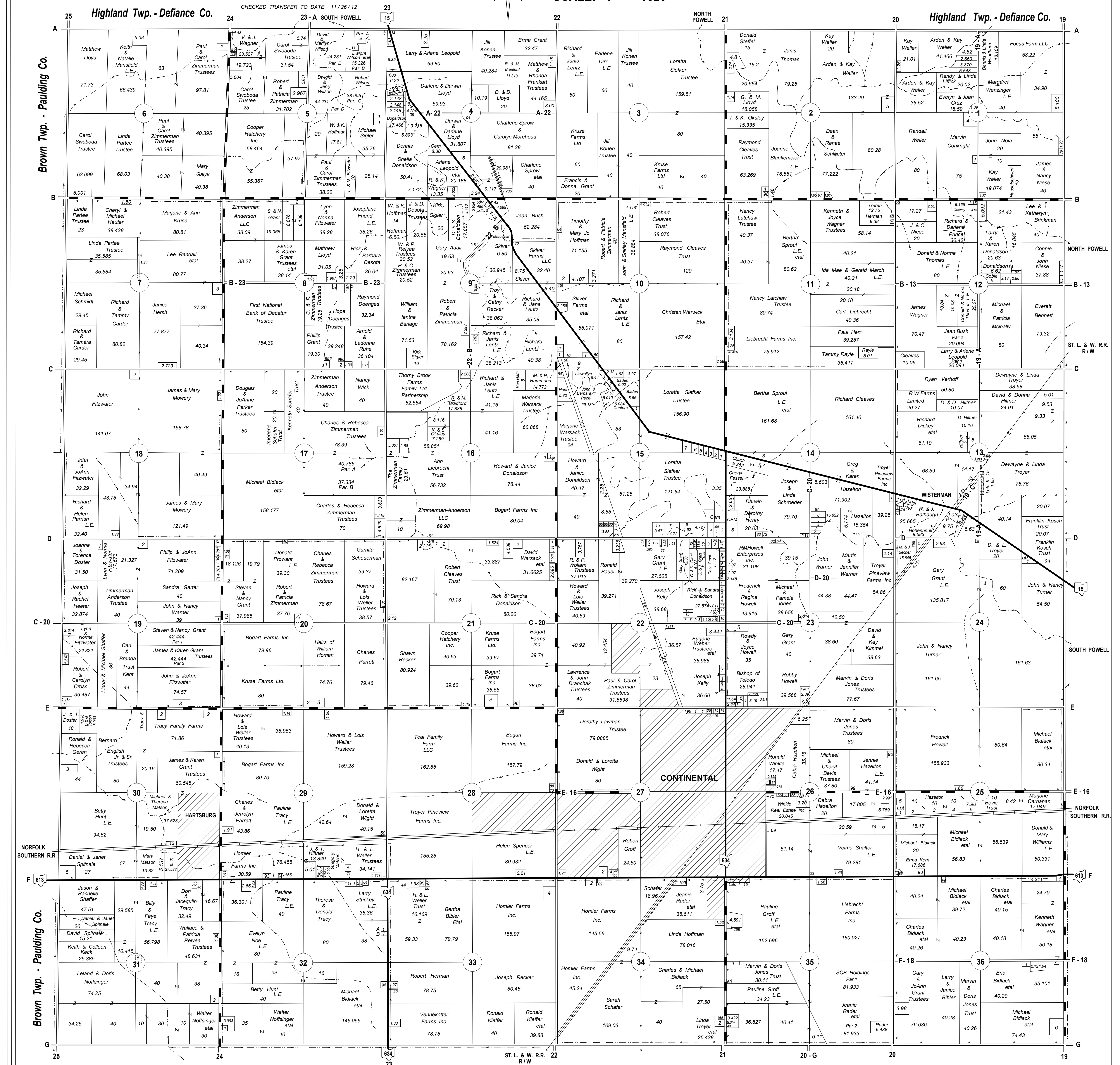
STATE ROADS
COUNTY ROADS
TOWNSHIP ROADS

T 2 N - R 5 E
2013



TERRENCE R. RECKER COUNTY ENGINEER

SCALE: 1" = 1320'



This plat is a copy and is for identification purposes only and cannot be guaranteed for accuracy. For more exact information please CHECK deeds and plats on file in Putnam County Recorders Office, Otwa, Ohio.