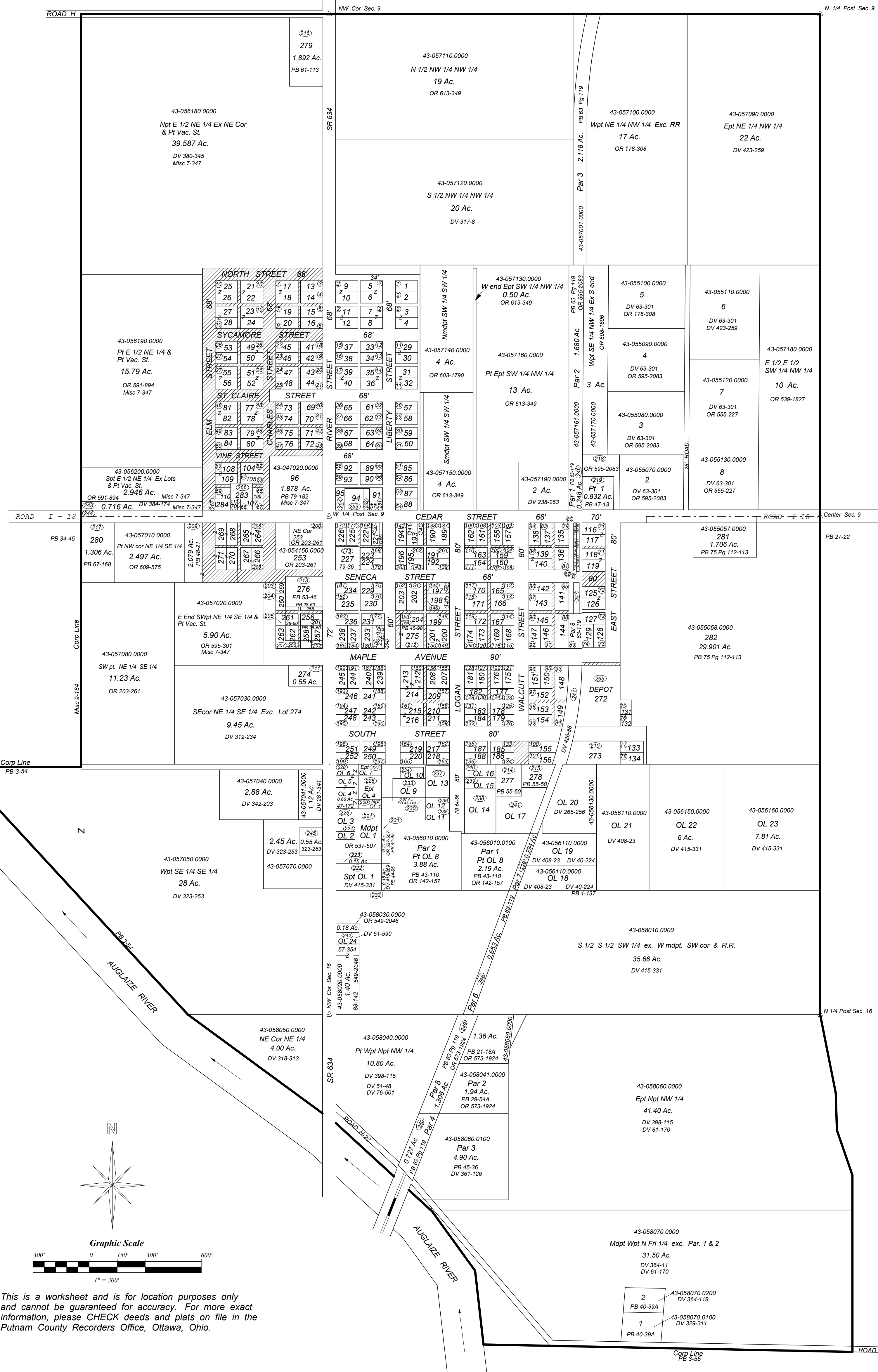


DUPONT, OHIO

PARCEL LOCATION		PARCEL LOCATION	
Circled No.	Parcel No.	Circled No.	Parcel No.
1	43-04400000	151	43-05000000
2	43-04400000	152	43-05000000
3	43-04400000	153	43-05000000
4	43-04400000	154	43-05000000
5	43-04400000	155	43-05000000
6	43-04400000	156	43-05000000
7	43-04400000	157	43-05000000
8	43-04400000	158	43-05000000
9	43-04400000	159	43-05000000
10	43-04400000	160	43-05000000
11	43-04400000	161	43-05000000
12	43-04400000	162	43-05000000
13	43-04400000	163	43-05000000
14	43-04400000	164	43-05000000
15	43-04400000	165	43-05000000
16	43-04400000	166	43-05000000
17	43-04400000	167	43-05000000
18	43-04400000	168	43-05000000
19	43-04400000	169	43-05000000
20	43-04400000	170	43-05000000
21	43-04400000	171	43-05000000
22	43-04400000	172	43-05000000
23	43-04400000	173	43-05000000
24	43-04400000	174	43-05000000
25	43-04400000	175	43-05000000
26	43-04400000	176	43-05000000
27	43-04400000	177	43-05000000
28	43-04400000	178	43-05000000
29	43-04400000	179	43-05000000
30	43-04400000	180	43-05000000
31	43-04400000	181	43-05000000
32	43-04400000	182	43-05000000
33	43-04400000	183	43-05000000
34	43-04400000	184	43-05000000
35	43-04400000	185	43-05000000
36	43-04400000	186	43-05000000
37	43-04400000	187	43-05000000
38	43-04400000	188	43-05000000
39	43-04400000	189	43-05000000
40	43-04400000	190	43-05000000
41	43-04400000	191	43-05000000
42	43-04400000	192	43-05000000
43	43-04400000	193	43-05000000
44	43-04400000	194	43-05000000
45	43-04400000	195	43-05000000
46	43-04400000	196	43-05000000
47	43-04400000	197	43-05000000
48	43-04400000	198	43-05000000
49	43-04400000	199	43-05000000
50	43-04400000	200	43-05000000
51	43-04400000	201	43-05000000
52	43-04400000	202	43-05000000
53	43-04400000	203	43-05000000
54	43-04400000	204	43-05000000
55	43-04400000	205	43-05000000
56	43-04400000	206	43-05000000
57	43-04400000	207	43-05000000
58	43-04400000	208	43-05000000
59	43-04400000	209	43-05000000
60	43-04400000	210	43-05000000
61	43-04400000	211	43-05000000
62	43-04400000	212	43-05000000
63	43-04400000	213	43-05000000
64	43-04400000	214	43-05000000
65	43-04400000	215	43-05000000
66	43-04400000	216	43-05000000
67	43-04400000	217	43-05000000
68	43-04400000	218	43-05000000
69	43-04400000	219	43-05000000
70	43-04400000	220	43-05000000
71	43-04400000	221	43-05000000
72	43-04400000	222	43-05000000
73	43-04400000	223	43-05000000
74	43-04400000	224	43-05000000
75	43-04400000	225	43-05000000
76	43-04400000	226	43-05000000
77	43-04400000	227	43-05000000
78	43-04400000	228	43-05000000
79	43-04400000	229	43-05000000
80	43-04400000	230	43-05000000
81	43-04400000	231	43-05000000
82	43-04400000	232	43-05000000
83	43-04400000	233	43-05000000
84	43-04400000	234	43-05000000
85	43-04400000	235	43-05000000
86	43-04400000	236	43-05000000
87	43-04400000	237	43-05000000
88	43-04400000	238	43-05000000
89	43-04400000	239	43-05000000
90	43-04400000	240	43-05000000
91	43-04400000	241	43-05000000
92	43-04400000	242	43-05000000
93	43-04400000	243	43-05000000
94	43-04400000	244	43-05000000
95	43-04400000	245	43-05000000
96	43-04400000	246	43-05000000
97	43-04400000	247	43-05000000
98	43-04400000	248	43-05000000
99	43-04400000	249	43-05000000
100	43-04400000	250	43-05000000
101	43-04400000	251	43-05000000
102	43-04400000	252	43-05000000
103	43-04400000	253	43-05000000
104	43-04400000	254	43-05000000
105	43-04400000	255	43-05000000
106	43-04400000	256	43-05000000
107	43-04400000	257	43-05000000
108	43-04400000	258	43-05000000
109	43-04400000	259	43-05000000
110	43-04400000	260	43-05000000
111	43-04400000	261	43-05000000
112	43-04400000	262	43-05000000
113	43-04400000	263	43-05000000
114	43-04400000	264	43-05000000
115	43-04400000	265	43-05000000
116	43-04400000	266	43-05000000
117	43-04400000	267	43-05000000
118	43-04400000	268	43-05000000
119	43-04400000	269	43-05000000
120	43-04400000	270	43-05000000
121	43-04400000	271	43-05000000
122	43-04400000	272	43-05000000
123	43-04400000	273	43-05000000
124	43-04400000	274	43-05000000
125	43-04400000	275	43-05000000
126	43-04400000	276	43-05000000
127	43-04400000	277	43-05000000
128	43-04400000	278	43-05000000
129	43-04400000	279	43-05000000
130	43-04400000	280	43-05000000
131	43-04400000	281	43-05000000
132	43-04400000	282	43-05000000
133	43-04400000	283	43-05000000
134	43-04400000	284	43-05000000
135	43-04400000	285	43-05000000
136	43-04400000	286	43-05000000
137	43-04400000	287	43-05000000
138	43-04400000	288	43-05000000
139	43-04400000	289	43-05000000
140	43-04400000	290	43-05000000
141	43-04400000	291	43-05000000
142	43-04400000	292	43-05000000
143	43-04400000	293	43-05000000
144	43-04400000	294	43-05000000
145	43-04400000	295	43-05000000
146	43-04400000	296	43-05000000
147	43-04400000	297	43-05000000
148	43-04400000	298	43-05000000
149	43-04400000	299	43-05000000
150	43-04400000	300	43-05000000

PLAT LEGEND			
LOT NO.	SUBDIVISION NAME	PB	PG
OL 1-23	N 1/2 S 1/2 SW 1/4 Sec 9	1-Rec	137
OL 1-23	N 1/2 S 1/2 SW 1/4 Sec 9	1	268
231-233	Hixsons Add - Addition to Liberty St.	1-Rec	138
1-273	Plat of Dupont	1-Rec	165
1-273	Plat of Dupont	1	233
---	Incorporation	2	124
---	Incorporation	3	54
274	Elter Plat Pt SE Cor NE SE Sec 8	0.55 Ac.	10 17
---	Vacation of Street & Alleys	Misc 7-347	11 29
---	Lucas Plat Pt Npt Wpt N Frac. Sec 16	1.36 Ac.	21 184
---	Propriet Plat Pt NE 1/4 SW 1/4 Sec 9	1.00 Ac.	25 44
255-262	Pt Lots 255-262 & Vacated Alley	---	28 60
---	Lucas 2nd Plat Pt Npt Wpt N Frac. Sec 16	1.94 Ac.	29 544
1-2	Brown Plat Pt SWpt N Frac. Sec 16	4.00	384
OL 8	Matjevich Retracement Survey, Par 1-2	2.19 Ac. - 3.88 Ac.	43 110
OL 8	Matjevich Plat Pt OL 8	0.07 Ac.	43 149
OL 8	Matjevich 2nd Plat Pt OL 8	0.36 Ac.	44 95
---	Lucas 3rd Plat Pt Npt Wpt N Frac. Sec 16	4.90 Ac.	45 36
---	Replat Lots 205-206 & Pt Vac Liberty St.	---	45 96
OL 1, 4, 5, 6, 7	Theobald Plat Pt OL 1, 4, 5, 6, 7	0.66 Ac.	47 172
268-271	Plats 268-271 & Pt SE 1/4 Sec 8	2.079 Ac.	48 21
276	Lot 254 & Pt Lots 255-259-260 & Vac Alley & St.	---	53 46
277-278	Davis Plat Pt OL 17	---	55 80
279	Pt NE 1/4 Sec 8	1.892 Ac.	61 113
1-11	Pt St. Louis & Western RR RW Sec 9 & Sec 16	---	63 119-124
---	Extension of Logans St.	---	64 50-57
280	Pt NE 1/4 SE 1/4 Sec 8	1.306 Ac.	67 168-169
281-282	Pt NE 1/4 SW 1/4 Sec 9	1.706 Ac. - 2.901 Ac.	75 112-113
---	Replat Intlot 227-228 & Pt Vac. Alleys	0.365 Ac.	79 36-37
96	Replat Intlot 96	1.878 Ac.	79 182-183
283-284	PT Intlots 105, 108, 110, 111 & Pt Vacated Alleys & Streets	---	82 28-29

Revised 2014



This is a worksheet and is for location purposes only and cannot be guaranteed for accuracy. For more exact information, please CHECK deeds and plats on file in the Putnam County Recorders Office, Ottawa, Ohio.