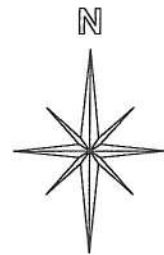


UNION TOWNSHIP

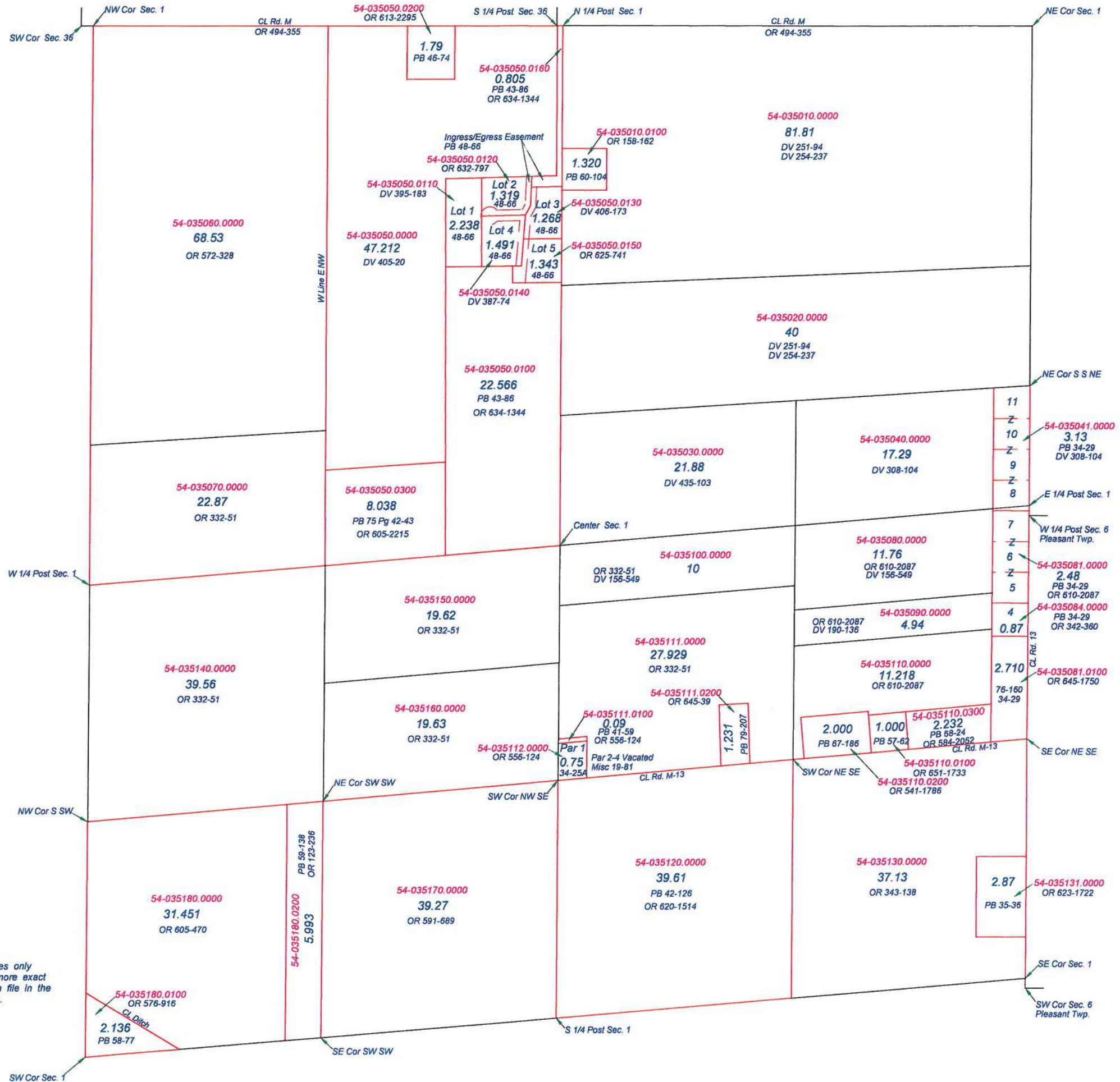
T1S R6E

SECTION 1

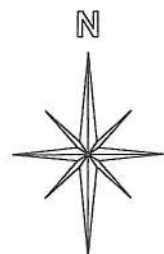


This is a worksheet and is for location purposes only and cannot be guaranteed for accuracy. For more exact information, please CHECK deeds and plats on file in the Putnam County Recorders Office, Ottawa, Ohio.

Revised 2013

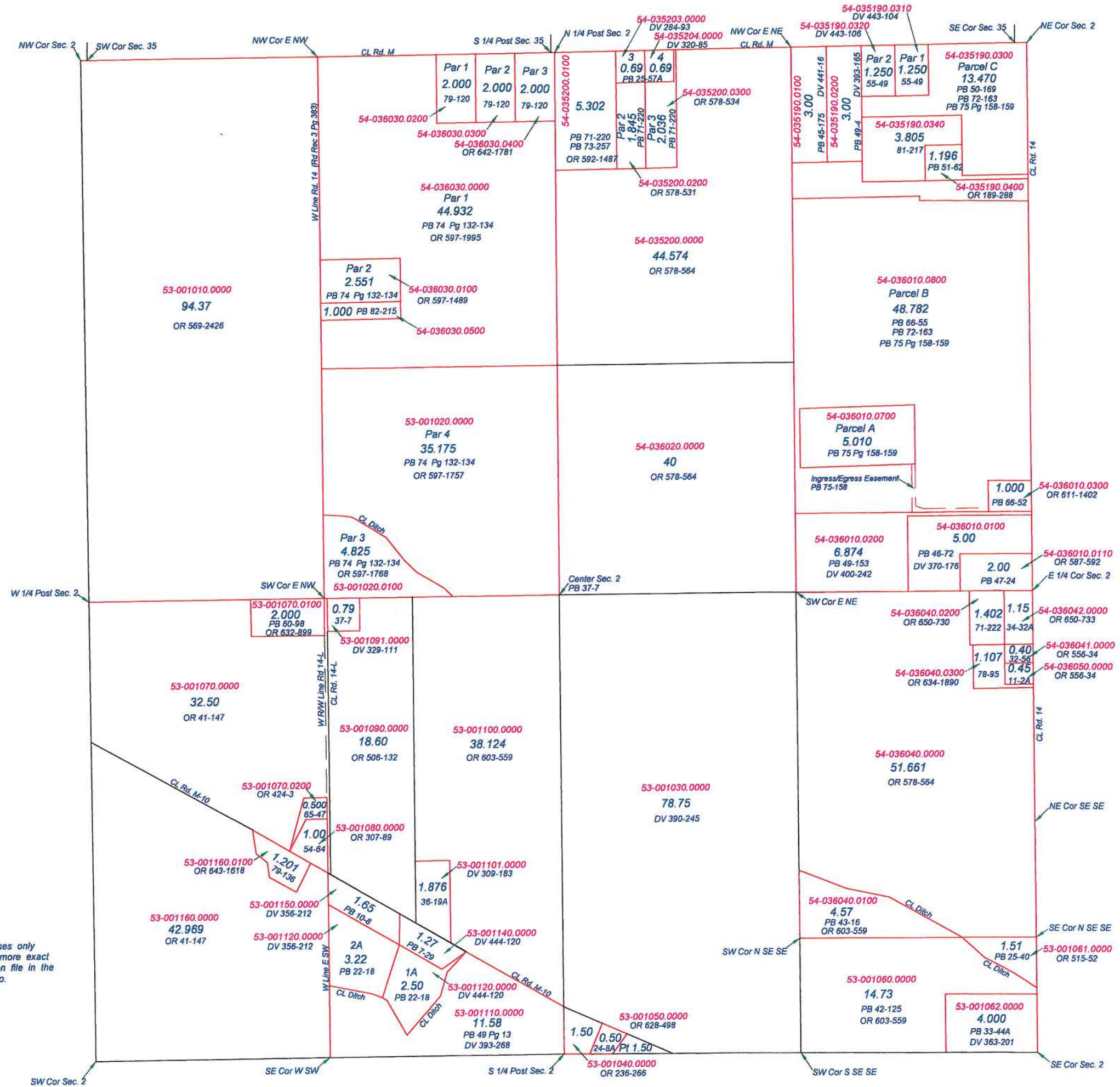


UNION TOWNSHIP
T1S R6E
SECTION 2

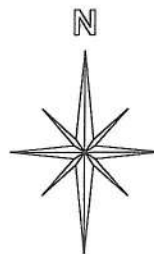


This is a worksheet and is for location purposes only and cannot be guaranteed for accuracy. For more exact information, please CHECK deeds and plats on file in the Putnam County Recorders Office, Ottawa, Ohio.

Revised 2015

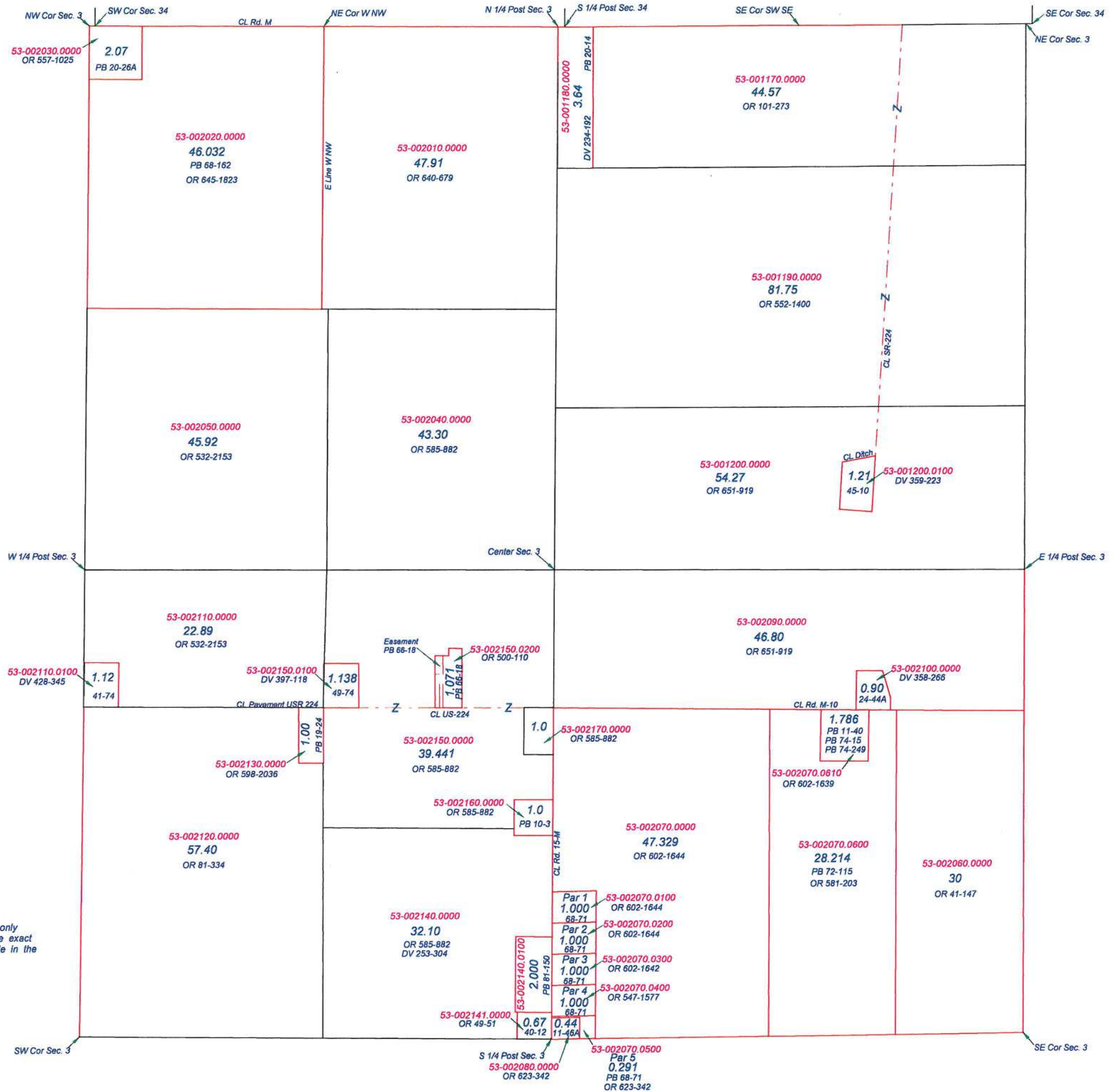


UNION TOWNSHIP
T1S R6E
SECTION 3



This is a worksheet and is for location purposes only and cannot be guaranteed for accuracy. For more exact information, please CHECK deeds and plats on file in the Putnam County Recorders Office, Ottawa, Ohio.

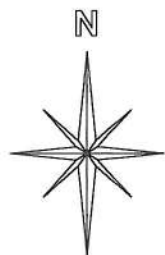
Revised 2014



UNION TOWNSHIP
T1S R6E
SECTION 4

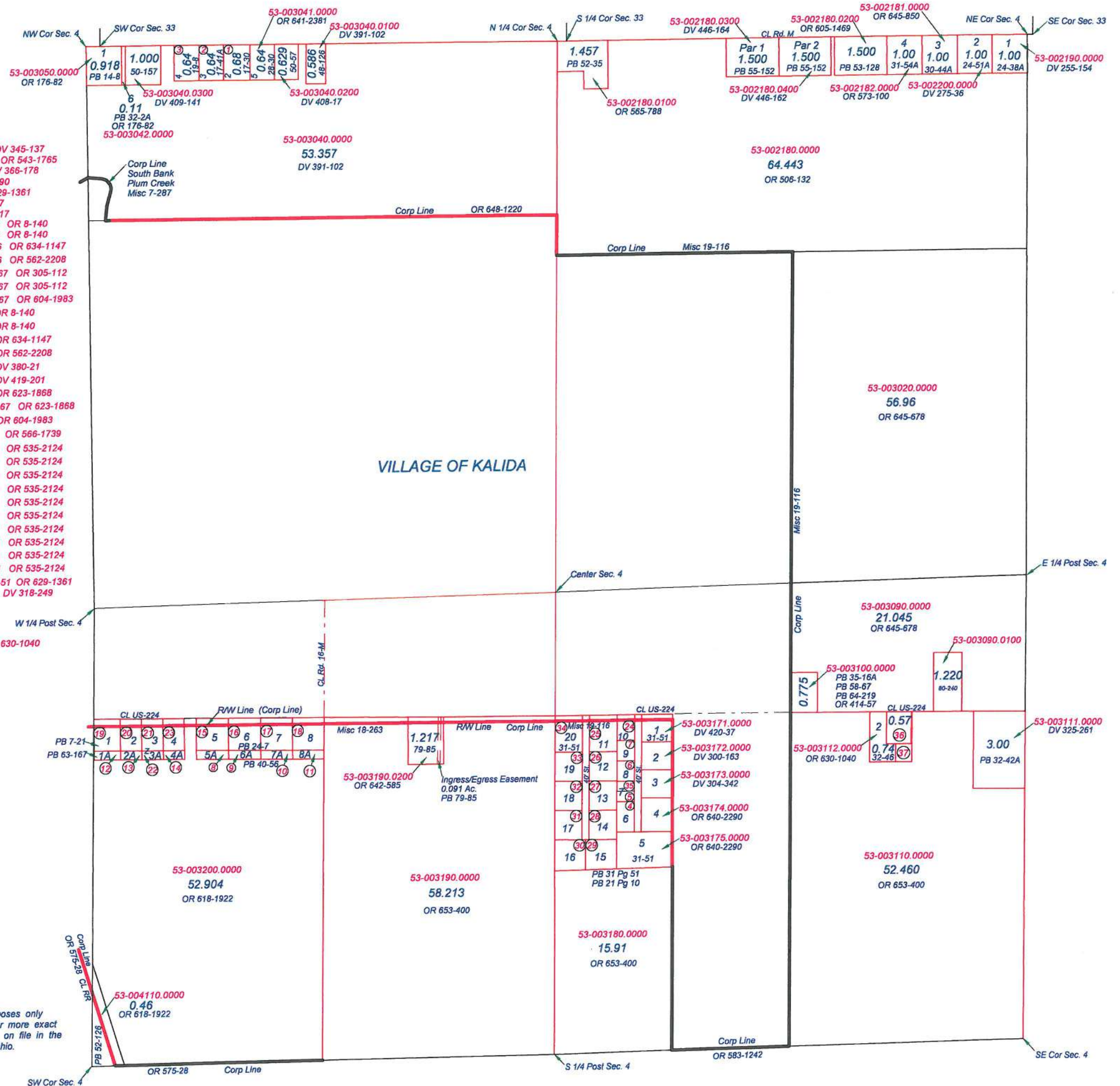
- ① 53-003060.0000 Par 2 0.68 Ac. PB 17-30 DV 345-137
- ② 53-003070.0000 Par 3 0.64 Ac. PB 17-41A OR 543-1765
- ③ 53-003080.0000 Par 4 0.64 Ac. PB 19-8 DV 366-178
- ④ 53-003176.0000 Lot 6 PB 31-51 OR 640-2290
- ⑤ 53-003177.0000 Lot 7 Spt PB 31-51 OR 629-1361
- ⑥ 53-003178.0000 Lot 8 PB 31-51 OR 187-207
- ⑦ 53-003179.0000 Lot 9 PB 31-51 OR 613-1417
- ⑧ 53-003200.0100 Lot 5A 0.211 Ac. PB 40-56 OR 8-140
- ⑨ 53-003200.0200 Lot 6A 0.211 Ac. PB 40-56 OR 8-140
- ⑩ 53-003200.0300 Lot 7A 0.211 Ac. PB 40-56 OR 634-1147
- ⑪ 53-003200.0400 Lot 8A 0.207 Ac. PB 40-56 OR 562-2208
- ⑫ 53-003200.0500 Par 1A 0.172 Ac. PB 63-167 OR 305-112
- ⑬ 53-003200.0600 Par 2A 0.138 Ac. PB 63-167 OR 305-112
- ⑭ 53-003200.0800 Par 4A 0.138 Ac. PB 63-167 OR 604-1983
- ⑮ 53-004010.0000 Par 5 0.76 Ac. PB 24-7 OR 8-140
- ⑯ 53-004020.0000 Par 6 0.77 Ac. PB 24-7 OR 8-140
- ⑰ 53-004030.0000 Par 7 0.77 Ac. PB 24-7 OR 634-1147
- ⑱ 53-004040.0000 Par 8 0.77 Ac. PB 24-7 OR 562-2208
- ⑲ 53-004050.0000 Par 1 0.63 Ac. PB 7-21 DV 380-21
- ⑳ 53-004060.0000 Par 2 0.49 Ac. PB 7-21 DV 419-201
- ㉑ 53-004070.0000 Par 3 0.49 Ac. PB 7-21 OR 623-1868
- ㉒ 53-004070.0000 Par 3A 0.138 Ac. PB 63-167 OR 623-1868
- ㉓ 53-004080.0000 Par 4 0.49 Ac. PB 7-21 OR 604-1983
- ㉔ 53-103171.0000 Lot 10 0.33 Ac. PB 31-51 OR 566-1739
- ㉕ 53-103172.0000 Lot 11 0.75 Ac. PB 31-51 OR 535-2124
- ㉖ 53-103173.0000 Lot 12 0.60 Ac. PB 31-51 OR 535-2124
- ㉗ 53-103174.0000 Lot 13 0.60 Ac. PB 31-51 OR 535-2124
- ㉘ 53-103175.0000 Lot 14 0.60 Ac. PB 31-51 OR 535-2124
- ㉙ 53-103176.0000 Lot 15 0.69 Ac. PB 31-51 OR 535-2124
- ㉚ 53-103177.0000 Lot 16 0.70 Ac. PB 31-51 OR 535-2124
- ㉛ 53-103178.0000 Lot 17 0.59 Ac. PB 31-51 OR 535-2124
- ㉜ 53-103179.0000 Lot 18 0.59 Ac. PB 31-51 OR 535-2124
- ㉝ 53-203171.0000 Lot 19 0.60 Ac. PB 31-51 OR 535-2124
- ㉞ 53-203172.0000 Lot 20 0.74 Ac. PB 31-51 OR 535-2124
- ㉟ 53-203173.0000 Lot 7 Npt 0.13 Ac. PB 31-51 OR 629-1361 DV 318-249

- ⑳ 53-003120.0000 0.57 Ac. PB 17-5A OR 630-1040
- ㉑ 53-003110.0100 0.230 Ac. PB 82-225



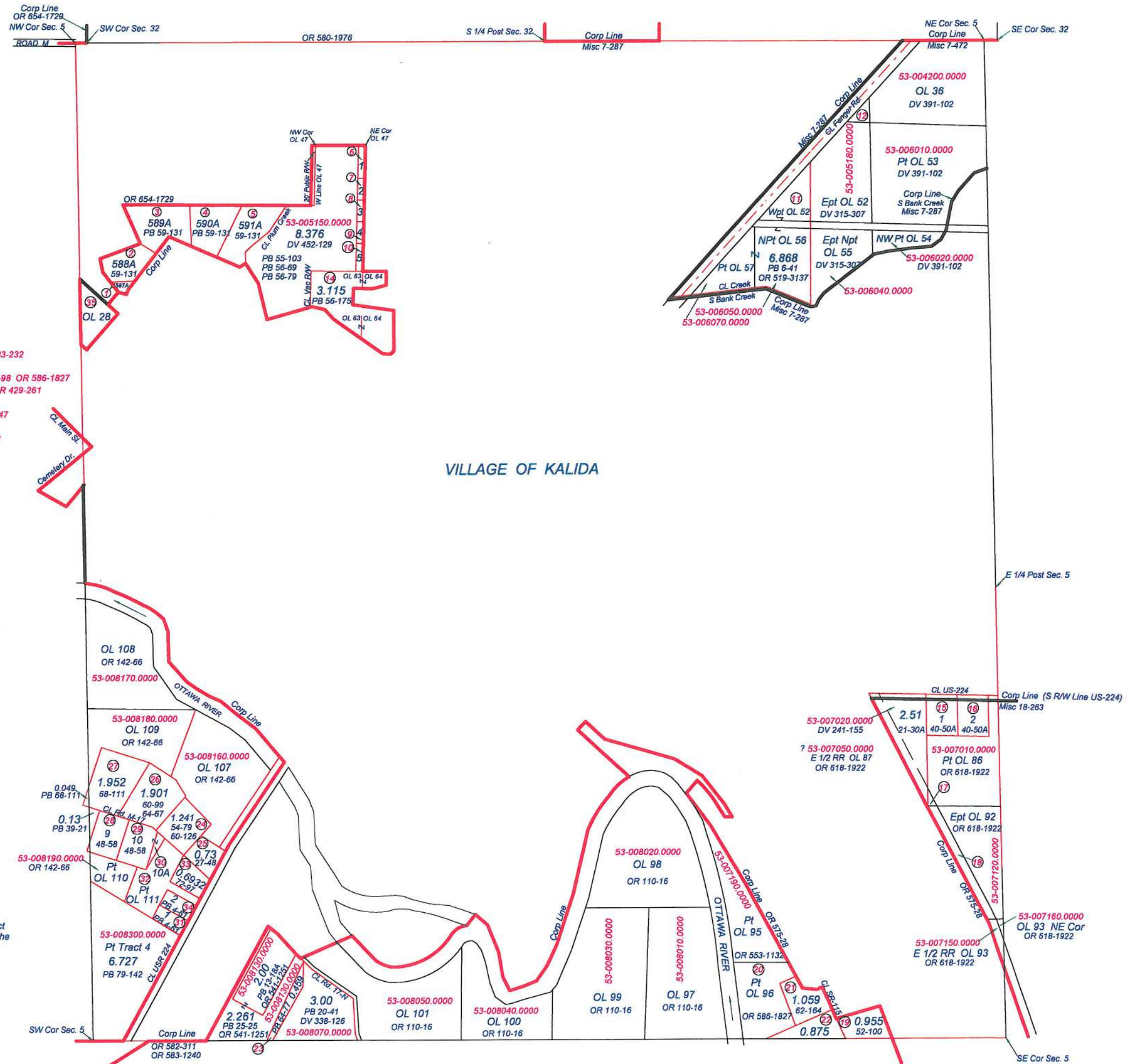
This is a worksheet and is for location purposes only and cannot be guaranteed for accuracy. For more exact information, please CHECK deeds and plats on file in the Putnam County Recorders Office, Ottawa, Ohio.

Revised 2015



UNION TOWNSHIP
T1S R6E
SECTION 5

- 1 53-005120.0100 Lot 587-A PB 59-131 OR 138-163
- 2 53-005120.0200 Lot 588-A PB 59-131 OR 194-248
- 3 53-005120.0300 Lot 589-A PB 59-131 OR 194-250
- 4 53-005120.0400 Lot 590-A PB 59-131 OR 566-1179
- 5 53-005120.0500 Lot 591-A PB 59-131 OR 572-1974
- 6 53-005150.0100 Par 1 0.174 Ac. PB 56-79 OR 600-885
- 7 53-005150.0200 Par 2 0.115 Ac. PB 56-79 DV 452-169
- 8 53-005150.0300 Par 3 0.115 Ac. PB 56-79 DV 452-191
- 9 53-005150.0400 Par 4 0.115 Ac. PB 56-79 DV 452-260
- 10 53-005150.0500 Par 5 0.147 Ac. PB 56-79 DV 452-262
- 11 53-005190.0000 OL 52 Wpt PB 6-41 OR 519-3137
- 12 53-005200.0000 OL 52 NE Cor OR 579-1961
- 13 53-006140.0000 OL 63 & 64 Pt PB 56-175 DV 445-143
- 14 53-007010.0100 Lot 1 OL 86 PB 40-50A DV 439-346
- 15 53-007010.0200 Lot 2 OL 86 PB 40-50A OR 626-660
- 16 53-007040.0000 E 1/2 RR OL 86 OR 618-1922
- 17 53-007110.0000 E 1/2 RR OL 92 OR 618-1922
- 18 53-007180.0000 OL 94 SWcor 0.955 Ac. PB 52-100 DV 283-232
- 19 53-007200.0000 OL 96 Pt OR 586-1827
- 20 53-007200.0100 OL 96 Emdpt 1.059 Ac. PB 62-164 PB 57-98 OR 586-1827
- 21 53-007200.0300 OL 96 Pt Pt Par 1 0.875 Ac. PB 65-35 OR 429-261
- 22 53-008141.0100 0.459 Ac. PB 64-77 OR 352-173
- 23 53-008160.0100 1.241 Ac. PB 60-126 PB 54-79 OR 364-47
- 24 53-008161.0000 0.73 Ac. PB 27-48 DV 336-259
- 25 53-008180.0100 1.901 Ac. PB 64-67 PB 60-99 OR 364-47
- 26 53-008180.0200 1.952 Ac. PB 68-111 OR 548-1129
- 27 53-008190.0100 Lot 9 PB 48-58 DV 386-200
- 28 53-008190.0200 Lot 10 PB 48-58 DV 386-194
- 29 53-008190.0200 Lot 10A PB 50-166 DV 435-305
- 30 53-009020.0000 Lot 1 PB 4-61 DV 322-143
- 31 53-009040.0000 OL 111 Nsd OR 142-66
- 32 53-009040.0200 0.6932 Ac. PB 72-97 OR 584-1855
- 33 53-009050.0000 Lot 2 PB 4-61 OR 142-66
- 34 53-078020.0000 OL 28 Public Cemetery



This is a worksheet and is for location purposes only and cannot be guaranteed for accuracy. For more exact information, please CHECK deeds and plats on file in the Putnam County Recorders Office, Ottawa, Ohio.

Revised 2013

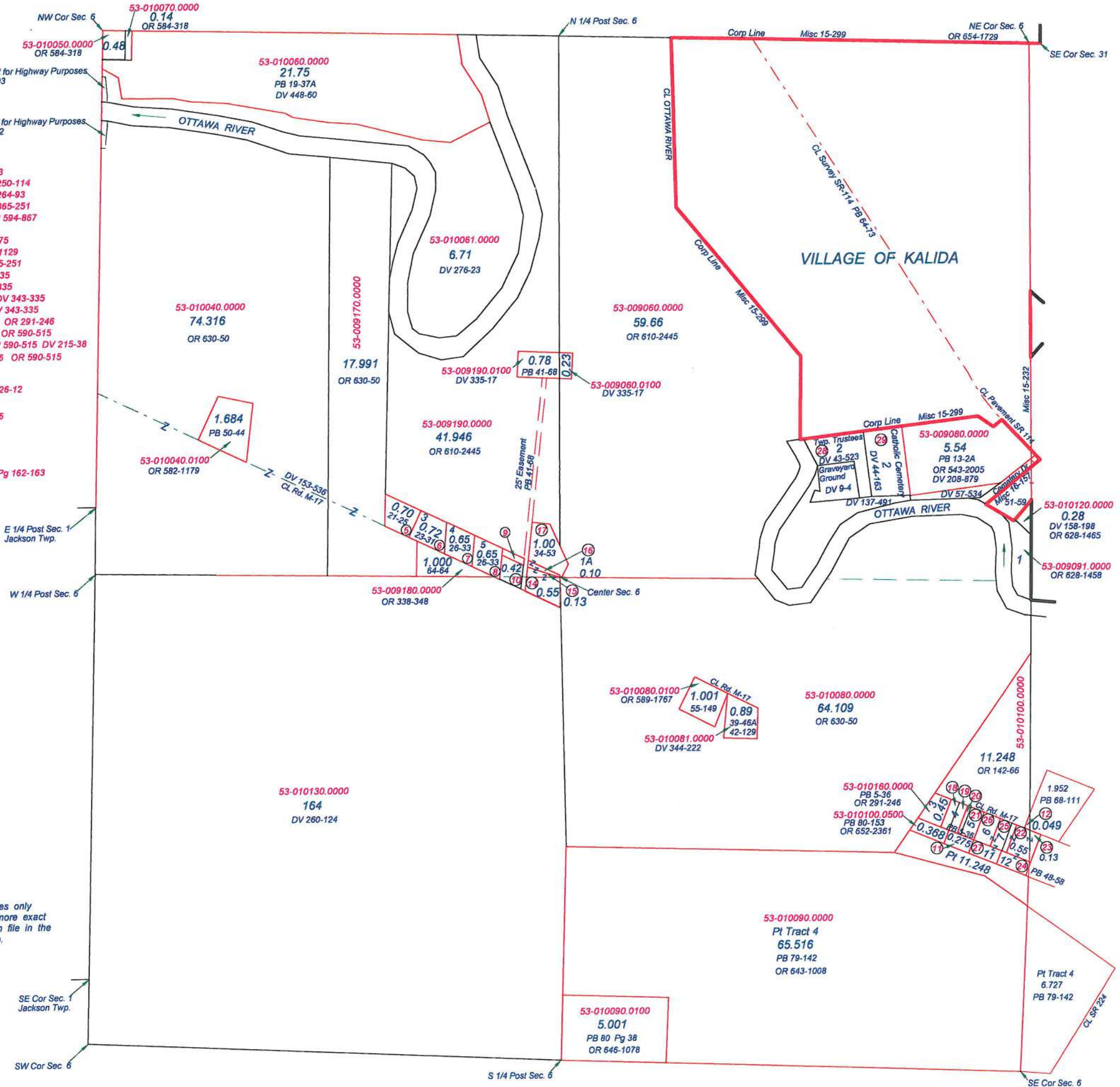
UNION TOWNSHIP

T 1 S R 6 E
SECTION 6

Easement for Highway Purposes
Par No 103
0.089 Ac.
EV 7-227

Easement for Highway Purposes
Par No 102
0.110 Ac.
EV 7-225

- 5 53-009200.0000 0.70 Ac. PB 21-25 DV 260-163
- 6 53-010010.0000 Par 3 0.72 Ac. PB 23-31 DV 250-114
- 7 53-010012.0000 Par 4 0.65 Ac. PB 26-33 DV 264-93
- 8 53-010013.0000 Par 5 0.65 Ac. PB 26-33 OR 365-251
- 9 53-010014.0000 Par 6A 0.11 Ac. PB 26-33 OR 594-867
- 10 53-010030.0000 0.42 Ac. OR 594-867
- 11 53-010100.0400 0.275 Ac. PB 79-35 OR 647-875
- 12 53-010100.0300 0.049 Ac. PB 68-111 OR 548-1129
- 13 53-010140.0000 SE cor Lot 5 PB 26-33 OR 365-251
- 14 53-010150.0000 0.55 Ac. PB 17-21A DV 343-335
- 15 53-010150.0000 0.13 Ac. PB 17-21A DV 343-335
- 16 53-010150.0000 Par 1-A 0.10 Ac. PB 26-33 DV 343-335
- 17 53-010150.0000 Lot 7 1.00 Ac. PB 34-53 DV 343-335
- 18 53-010170.0000 Par 4 W 1/2 0.19 Ac. PB 5-36 OR 291-246
- 19 53-010180.0000 Par 4 E 1/2 0.19 Ac. PB 5-36 OR 590-515
- 20 53-010190.0000 Par 5 Wpt 0.08 Ac. PB 5-36 OR 590-515 DV 215-38
- 21 53-010200.0000 Par 5 Ex Wpt 0.30 Ac. PB 5-36 OR 590-515
- 22 53-011020.0000 Par 7 Ept & Pt SE 0.55 Ac.
PB 5-36 PB 39-21 DV 426-12
- 23 53-011020.0000 Pt SE 0.13 Ac. PB 39-21 DV 426-12
- 24 53-011020.0000 Lot 12 PB 48-58 DV 386-196
- 25 53-011021.0000 Lot 7 Wpt PB 5-36 DV 262-166
- 26 53-011021.0000 Par 6 PB 5-36 DV 262-166
- 27 53-011021.0000 Lot 11 PB 48-58 OR 647-550
- 28 53-078060.0000 3.82 Ac. DV 9-44 DV 43-523
DV 57-534 DV 137-491
- 29 53-078070.0000 2.00 Ac. OR 543-2005 DV 44 Pg 162-163



This is a worksheet and is for location purposes only and cannot be guaranteed for accuracy. For more exact information, please CHECK deeds and plats on file in the Putnam County Recorders Office, Ottawa, Ohio.

Revised 2013

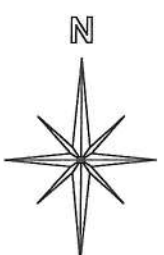
UNION TOWNSHIP

T1S R6E

SECTION 9

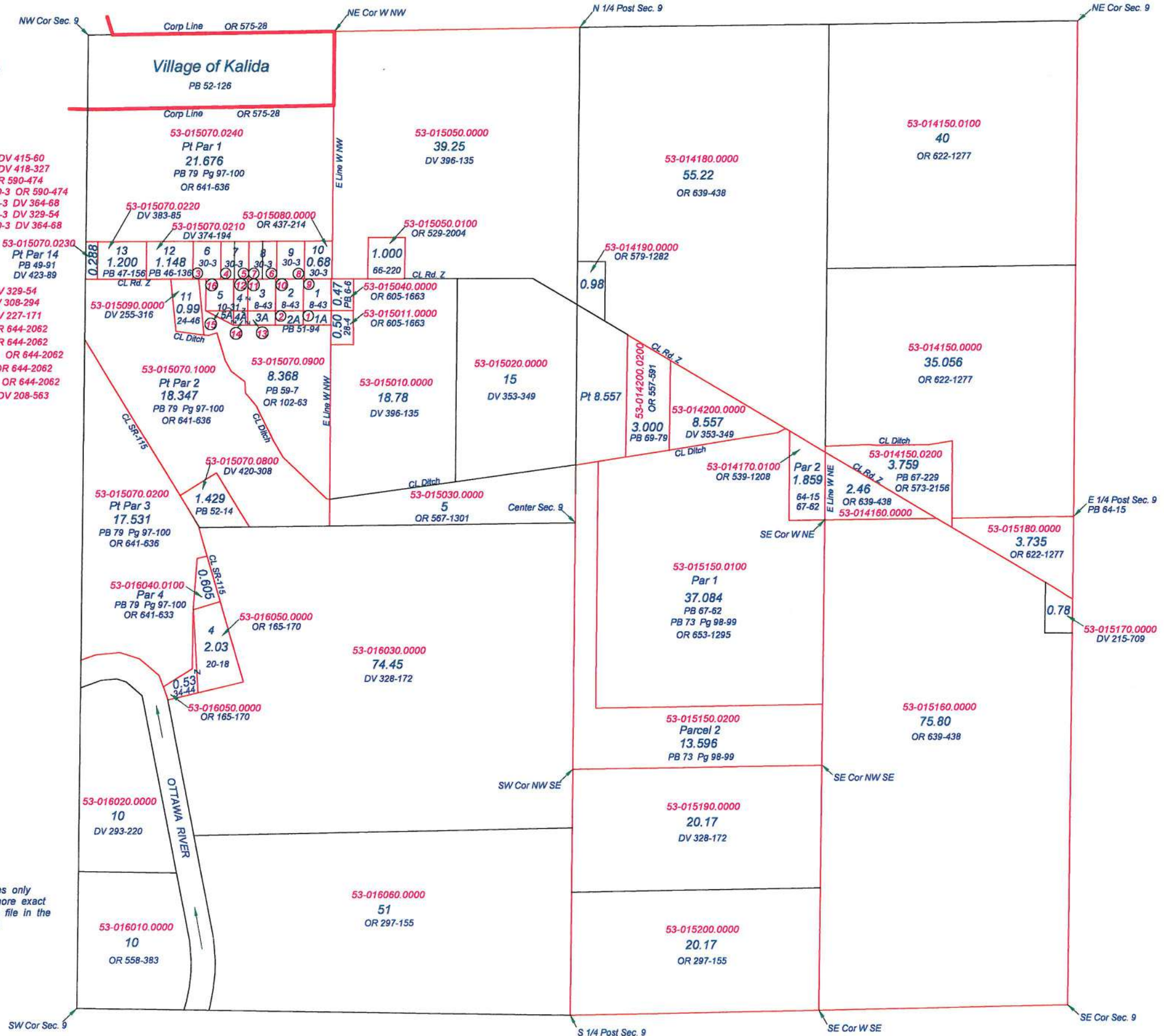
- ① 53-015070.0300 Lot 1A 0.262 Ac. PB 51-94 DV 415-60
- ② 53-015070.0400 Lot 2A 0.262 Ac. PB 51-94 DV 418-327
- ③ 53-015071.0000 Par 6 0.688 Ac. PB 30-3 OR 590-474
- ④ 53-015072.0000 Par 7 W 1/2 0.344 Ac. PB 30-3 OR 590-474
- ⑤ 53-015072.0100 Par 7 E 1/2 0.344 Ac. PB 30-3 DV 364-68
- ⑥ 53-015073.0000 Par 8 E 1/2 0.344 Ac. PB 30-3 DV 329-54
- ⑦ 53-015073.0100 Par 8 W 1/2 0.344 Ac. PB 30-3 DV 364-68

- ⑧ 53-015074.0000 Par 9 0.69 Ac. PB 30-3 DV 329-54
- ⑨ 53-015100.0000 Par 1 0.58 Ac. PB 8-43 DV 308-294
- ⑩ 53-015110.0000 Par 2 0.58 Ac. PB 8-43 DV 227-171
- ⑪ 53-015120.0000 Par 3 0.58 Ac. PB 8-43 OR 644-2062
- ⑫ 53-015120.0000 Par 4 0.29 Ac. PB 8-43 OR 644-2062
- ⑬ 53-015120.0000 Lot 3A 0.262 Ac. PB 51-94 OR 644-2062
- ⑭ 53-015120.0000 Lot 4A 0.13 Ac. PB 51-94 OR 644-2062
- ⑮ 53-015120.0000 Lot 5A 0.13 Ac. PB 51-94 OR 644-2062
- ⑯ 53-015140.0000 Par 5 0.58 Ac. PB 10-31 DV 208-563



This is a worksheet and is for location purposes only and cannot be guaranteed for accuracy. For more exact information, please CHECK deeds and plats on file in the Putnam County Records Office, Ottawa, Ohio.

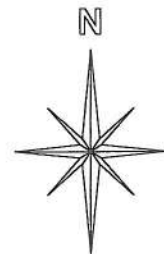
Revised 2013



UNION TOWNSHIP

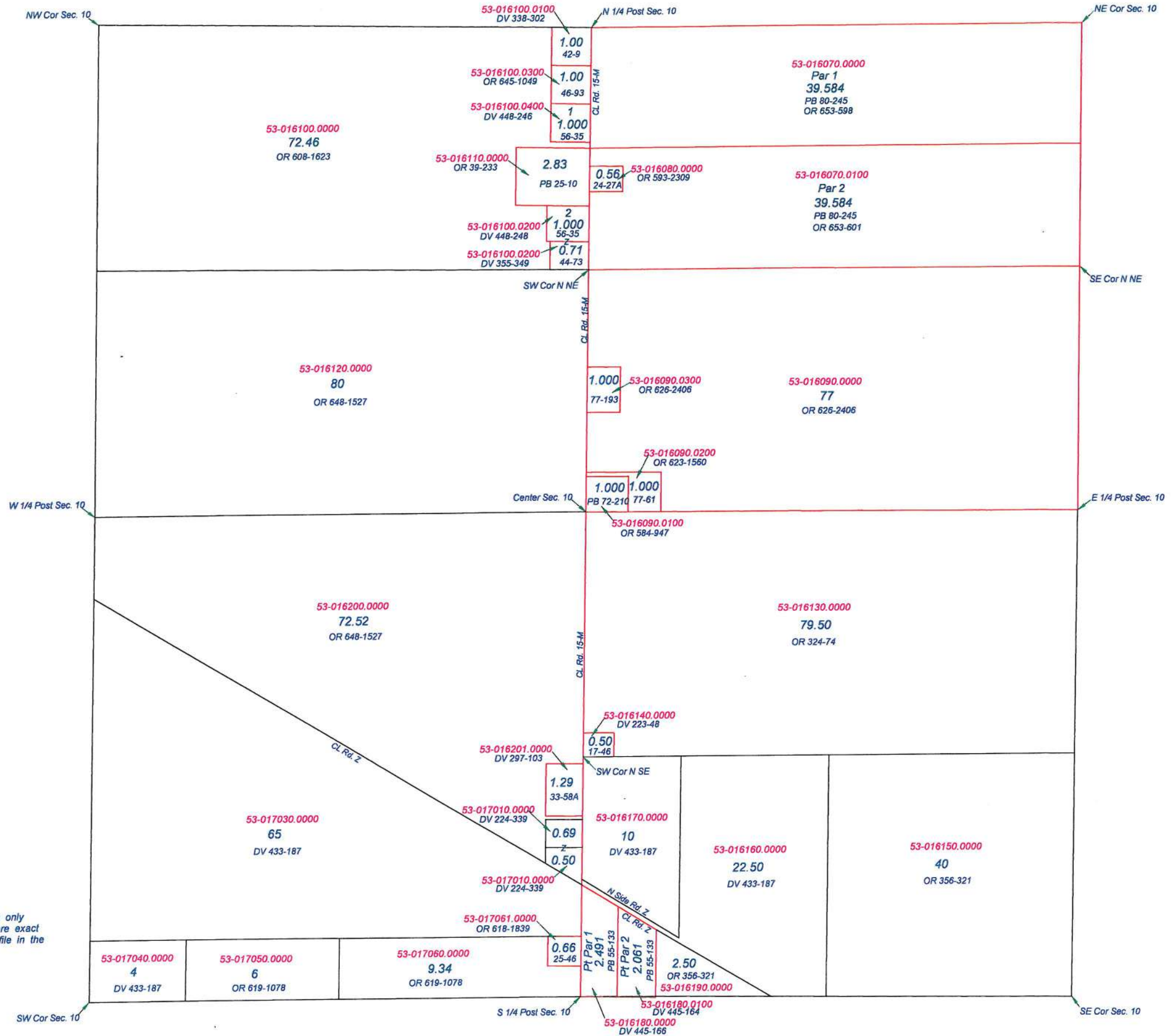
T1S R6E

SECTION 10

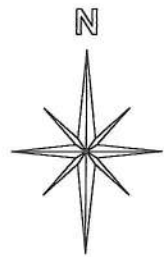


This is a worksheet and is for location purposes only and cannot be guaranteed for accuracy. For more exact information, please CHECK deeds and plats on file in the Putnam County Recorders Office, Ottawa, Ohio.

Revised 2013

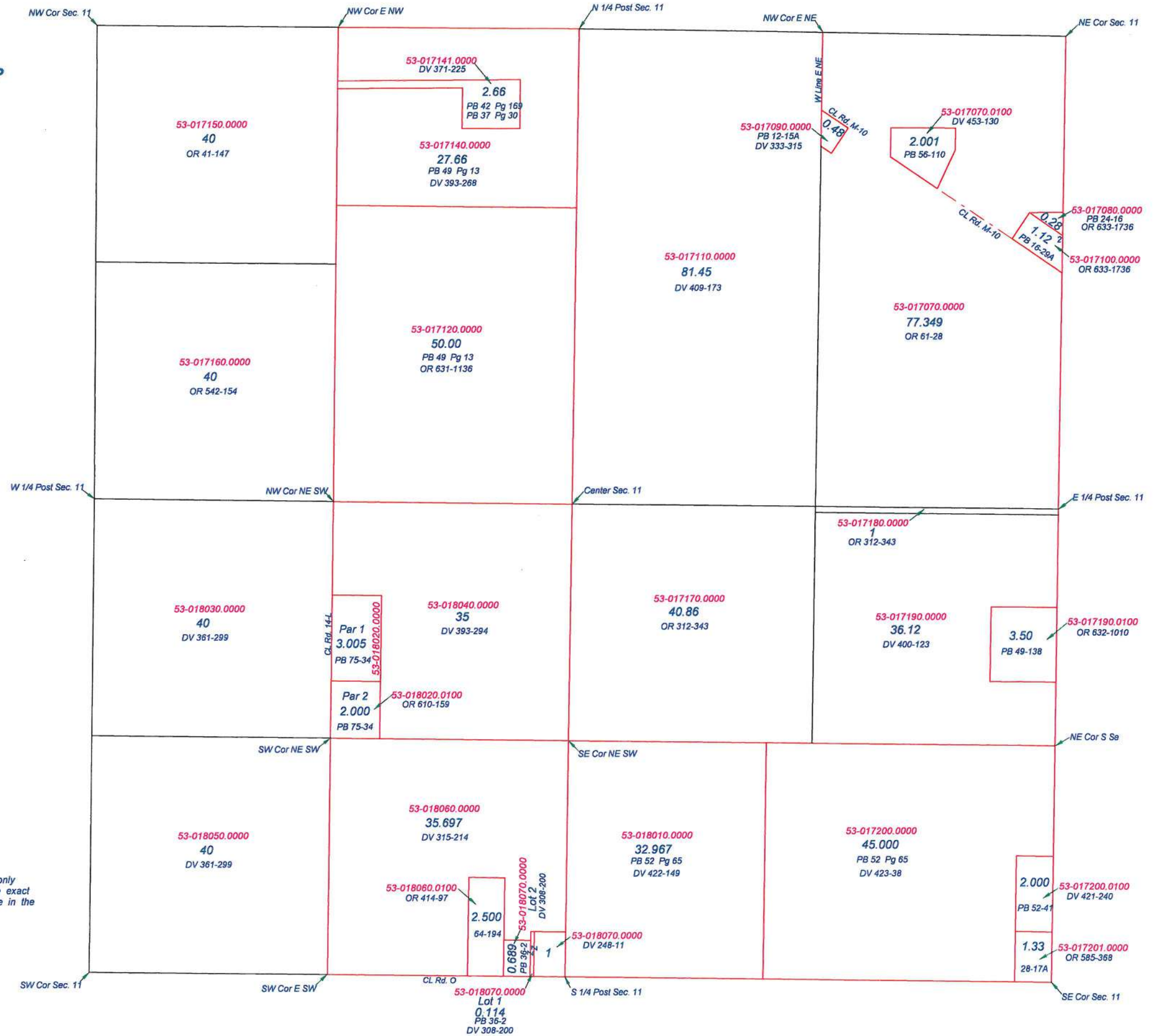


UNION TOWNSHIP
T1S R6E
SECTION 11

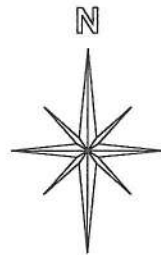


This is a worksheet and is for location purposes only and cannot be guaranteed for accuracy. For more exact information, please CHECK deeds and plats on file in the Putnam County Recorders Office, Ottawa, Ohio.

Revised 2013

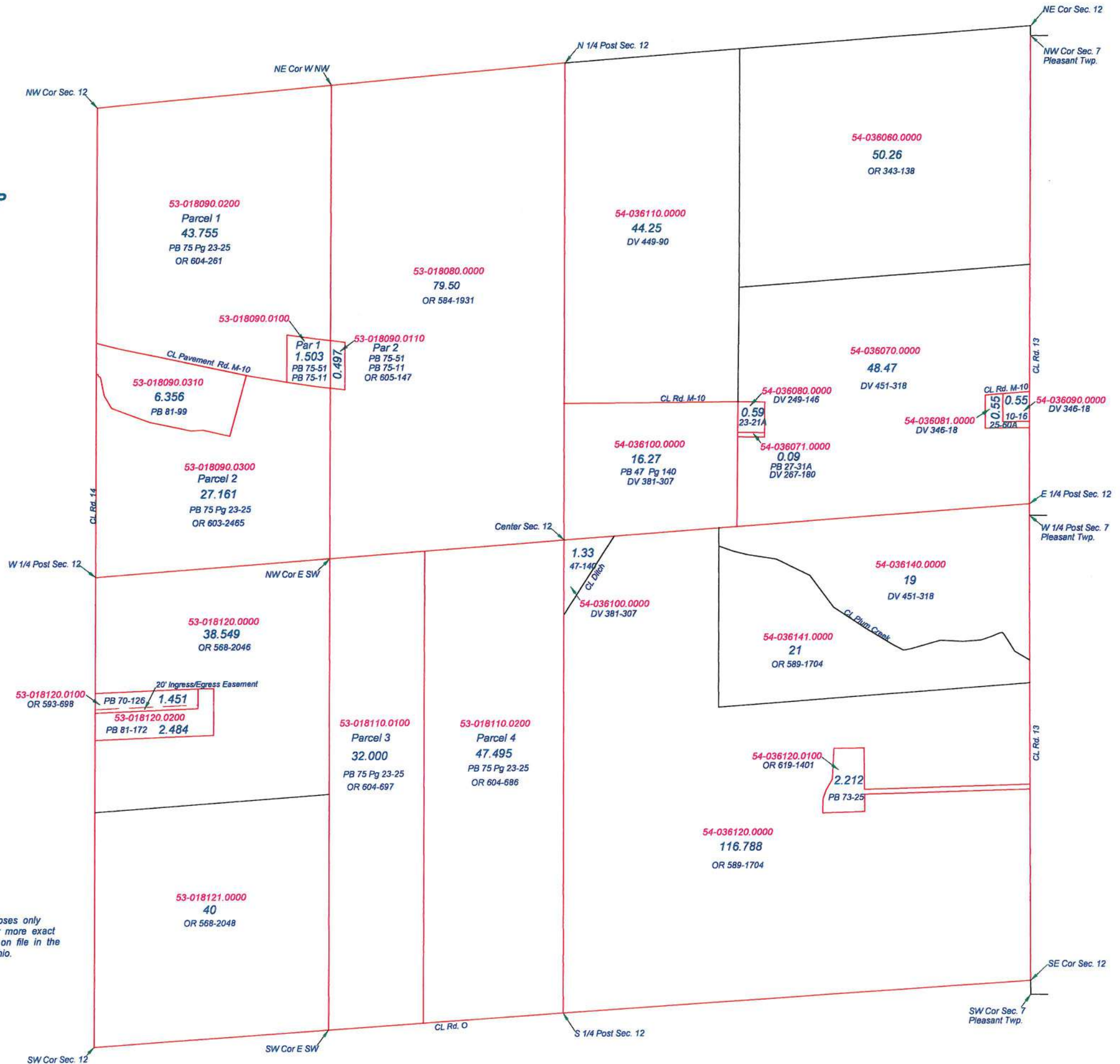


UNION TOWNSHIP
 T1S R6E
 SECTION 12



This is a worksheet and is for location purposes only and cannot be guaranteed for accuracy. For more exact information, please CHECK deeds and plats on file in the Putnam County Recorders Office, Ottawa, Ohio.

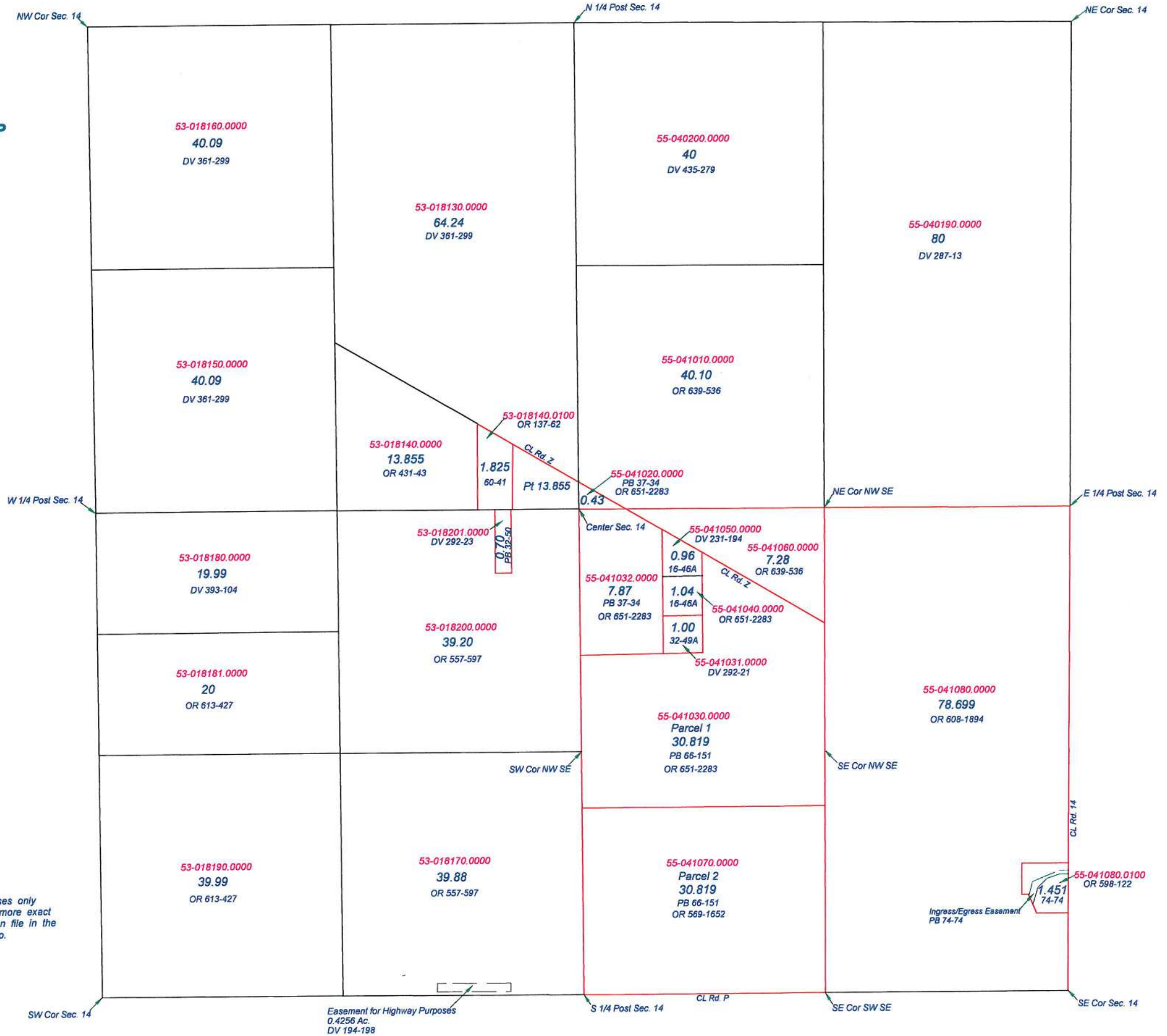
Revised 2014



This is a worksheet and is for location purposes only and cannot be guaranteed for accuracy. For more exact information, please CHECK deeds and plats on file in the Putnam County Recorders Office, Ottawa, Ohio.

Revised 2014

UNION TOWNSHIP
T1S R6E
SECTION 14



This is a worksheet and is for location purposes only and cannot be guaranteed for accuracy. For more exact information, please CHECK deeds and plats on file in the Putnam County Recorders Office, Ottawa, Ohio.

Revised 2013

Easement for Highway Purposes
0.4256 Ac.
DV 194-198