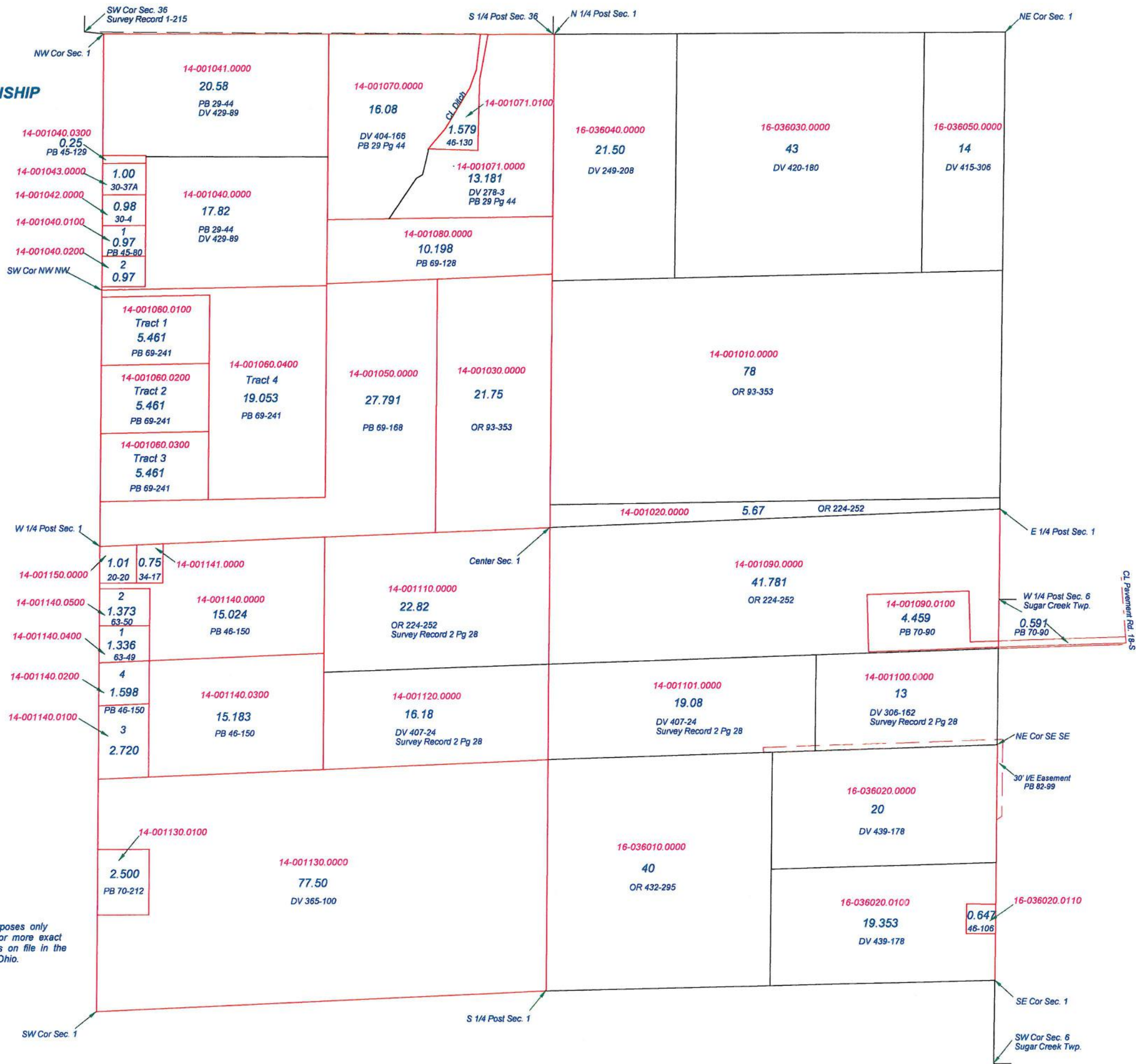


**JENNINGS TOWNSHIP**

T2S R5E

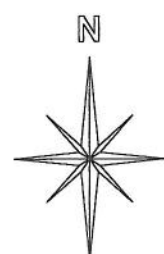
SECTION 1



This is a worksheet and is for location purposes only and cannot be guaranteed for accuracy. For more exact information, please CHECK deeds and plats on file in the Putnam County Recorders Office, Ottawa, Ohio.

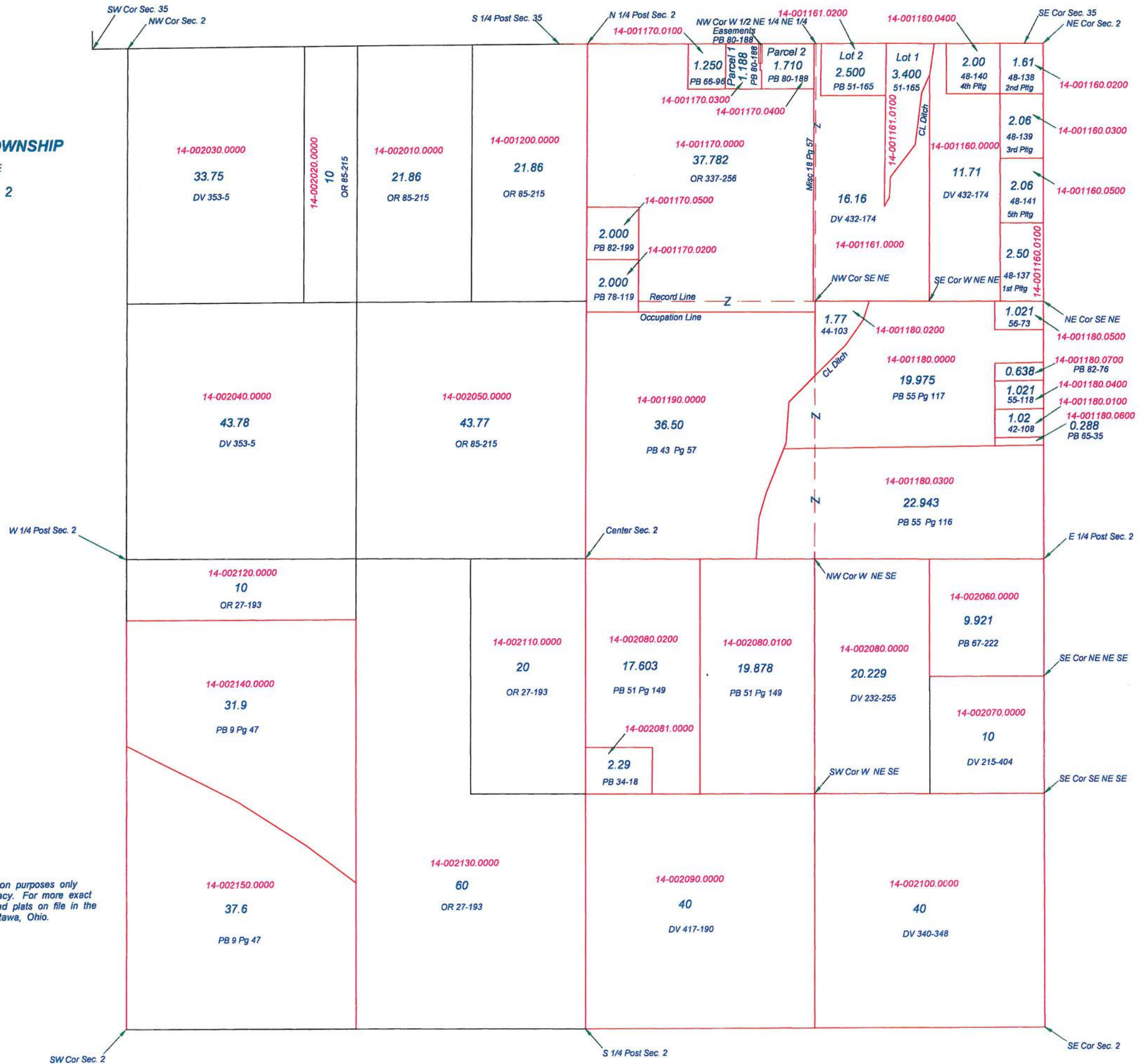
Revised 2006

**JENNINGS TOWNSHIP**  
T2S R5E  
SECTION 2

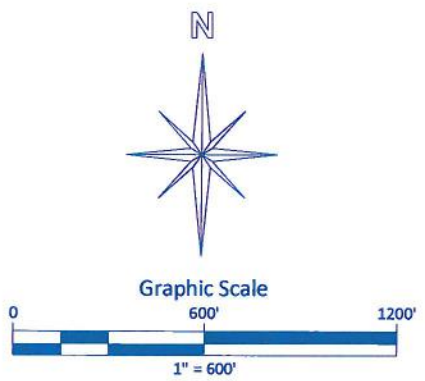


This is a worksheet and is for location purposes only and cannot be guaranteed for accuracy. For more exact information, please CHECK deeds and plats on file in the Putnam County Recorders Office, Ottawa, Ohio.

Revised 2015



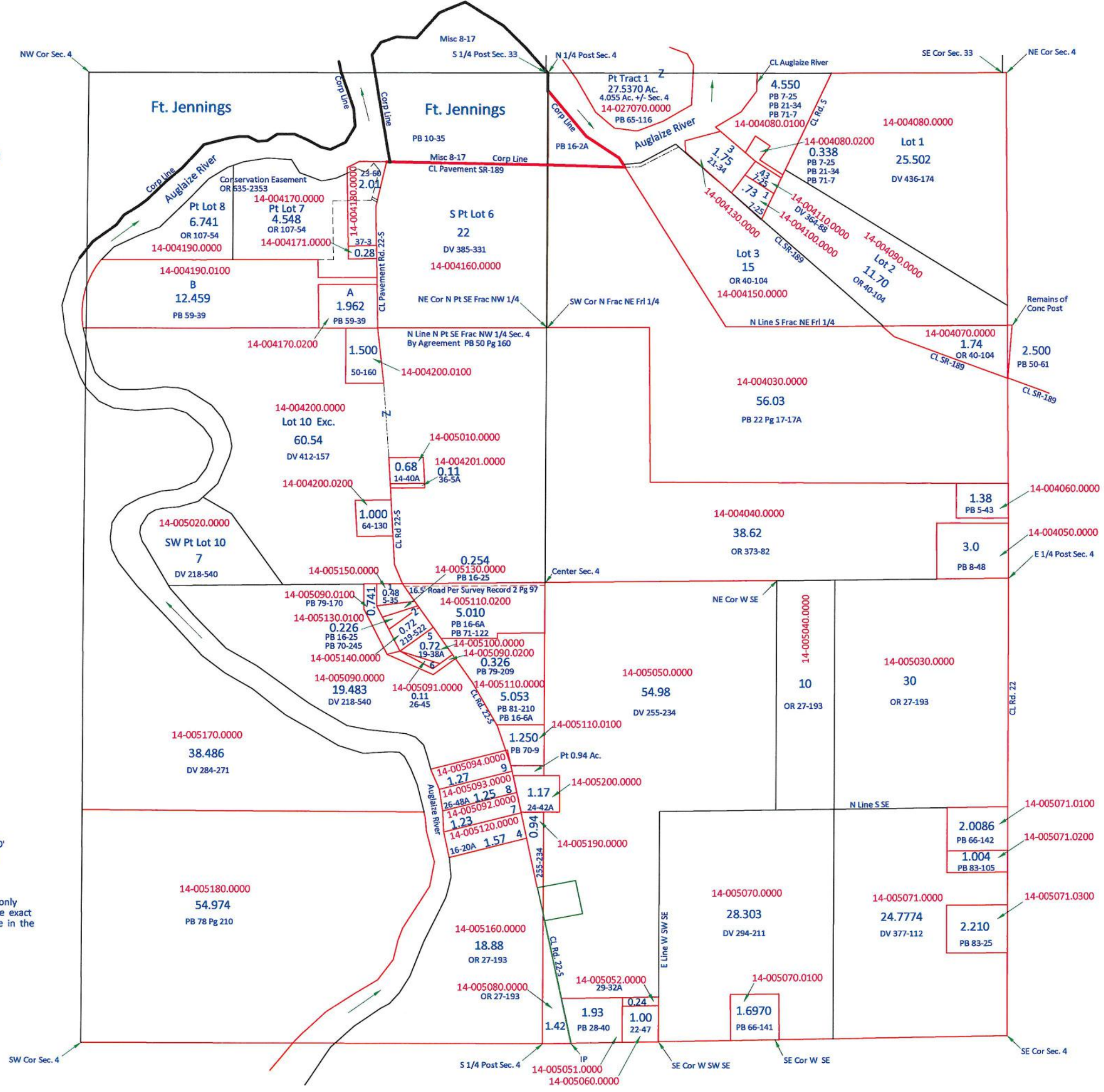
JENNINGS TOWNSHIP  
T 2 S R 5 E  
SECTION 4



This is a worksheet and is for location purposes only and cannot be guaranteed for accuracy. For more exact information, please CHECK deeds and plats on file in the Putnam County Recorders Office, Ottawa, Ohio.

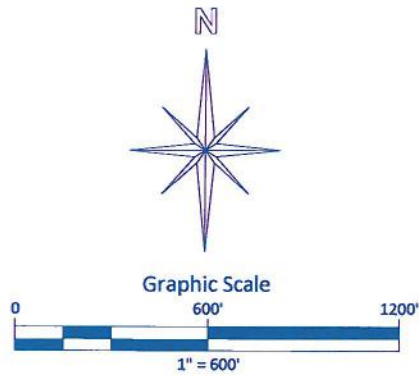
Revised 2015

PENDING SPLIT IN GREEN



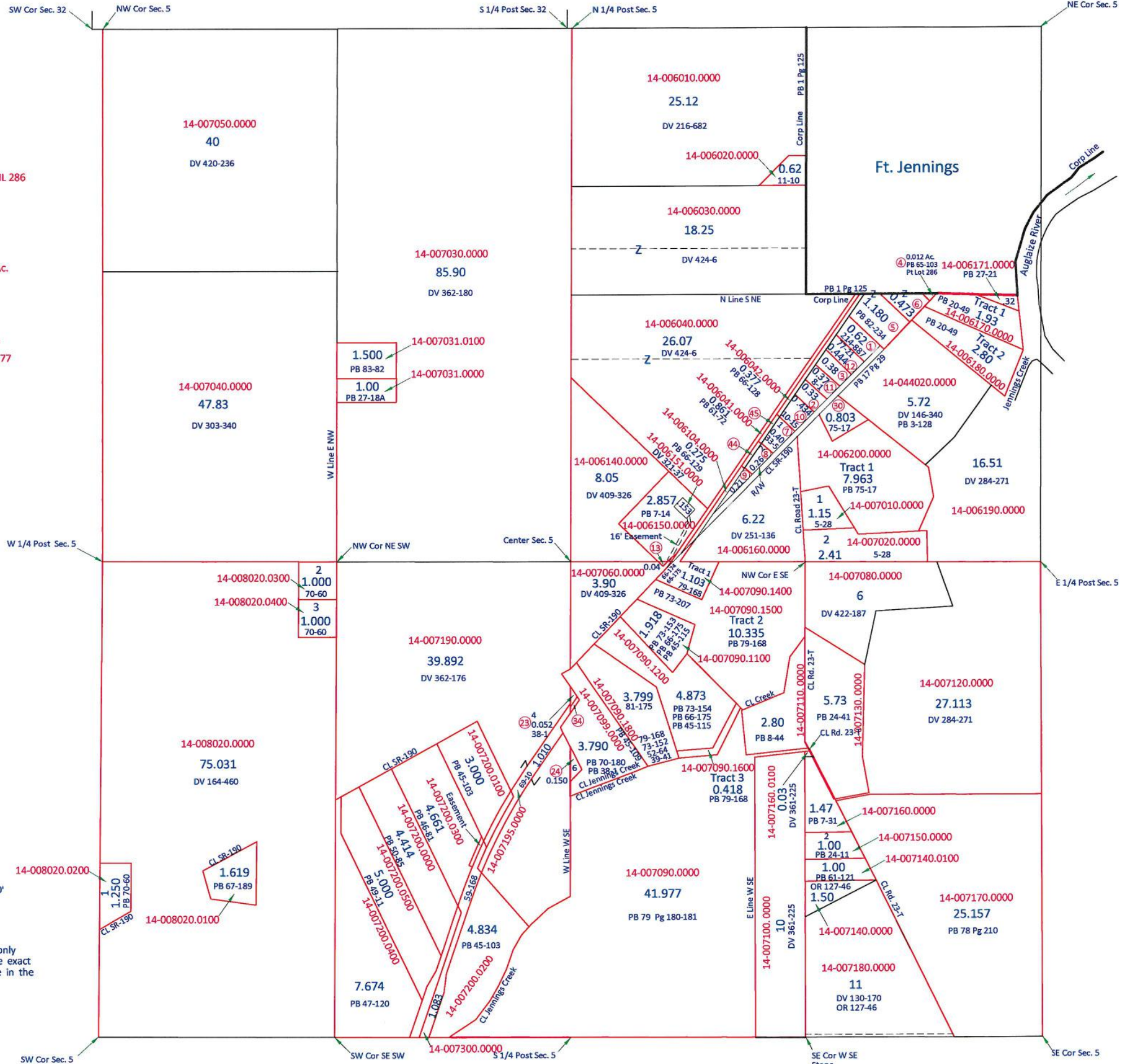
**JENNINGS TOWNSHIP**  
T 2S R 5E  
**SECTION 5**

- ① 14-006060.0000 DV 214-887 0.62 Ac.
- ② 14-006070.0000 DV 222-545 0.33 Ac.
- ③ 14-006080.0000 DV 234-83 0.38 Ac.
- ④ 17-957095.0000 PB 65-103 0.012 Ac. Pt IL 286
- ⑤ 14-006090.0100 PB 82-234 1.180 Ac.
- ⑥ 14-006090.0200 PB 82-233 0.473 Ac.
- ⑦ 14-006101.0000 Par 1 PB 33-5 0.40 Ac.
- ⑧ 14-006102.0000 Par 2 PB 33-5 0.26 Ac.
- ⑨ 14-006103.0000 Par 3 PB 33-5 0.21 Ac.
- ⑩ 14-006110.0000 PB 10-15 0.434 Ac.
- ⑪ 14-006120.0000 PB 8-1 DV 396-76 0.37 Ac.
- ⑫ 14-006130.0000 PB 77-21 0.444 Ac.
- ⑬ 14-007070.0000 PB 7-14 0.040 Ac.
- ⑭ 14-007092.0000 Par 4 PB 38-1 0.052 Ac.
- ⑮ 14-007093.0000 Par 6 PB 38-1 0.15 Ac.
- ⑯ 14-006200.0100 Tract 2 0.803 Ac. PB 75-17
- ⑰ 14-007089.0110 Pt Par 1 0.037 Ac. PB 66-177
- ⑱ 14-006042.0100 0.076 Ac. PB 67-42
- ⑲ 14-006042.0200 0.082 Ac. PB 68-146



This is a worksheet and is for location purposes only and cannot be guaranteed for accuracy. For more exact information, please CHECK deeds and plats on file in the Putnam County Recorders Office, Ottawa, Ohio.

Revised 2015

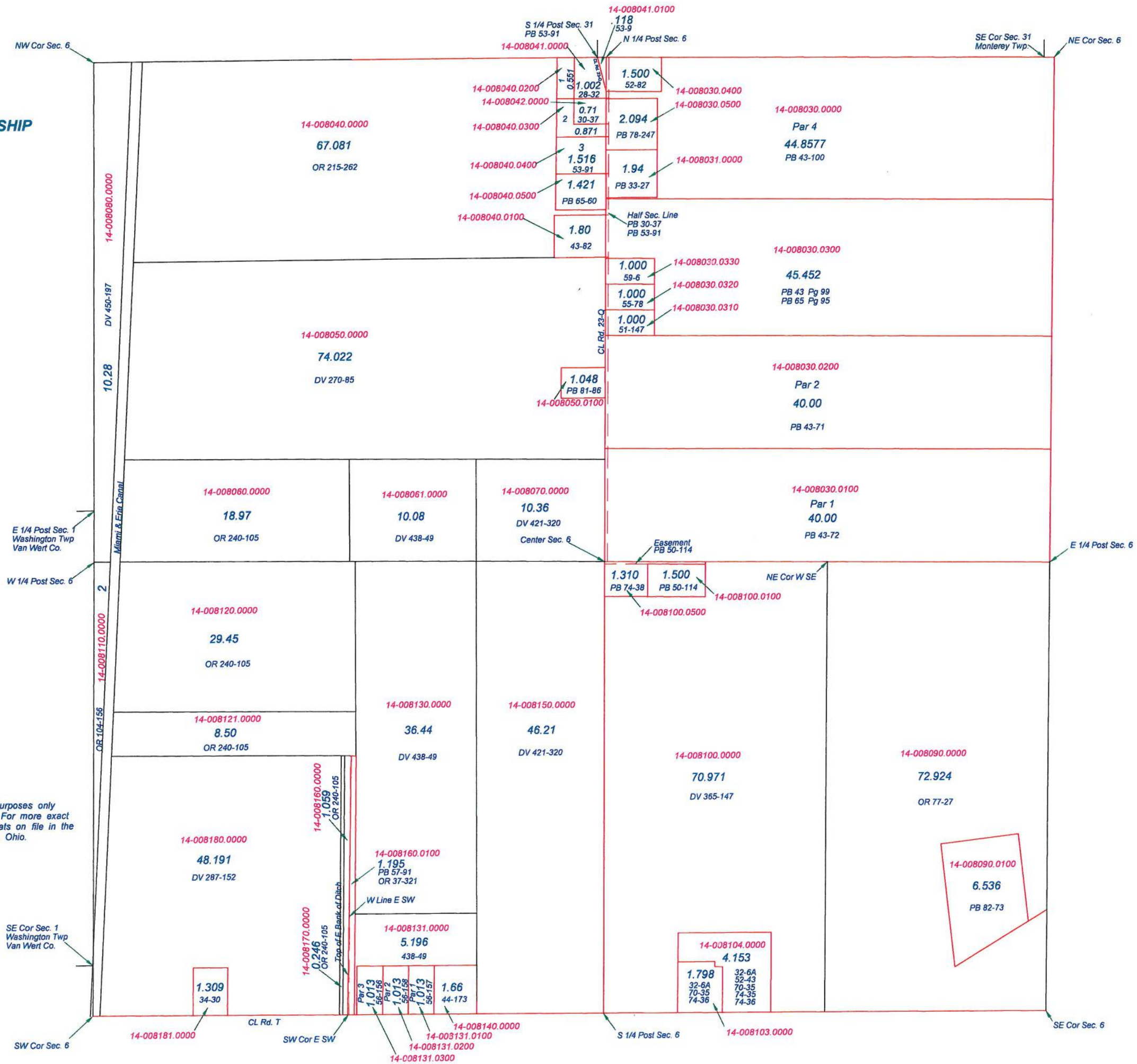


**JENNINGS TOWNSHIP**  
T2S R5E  
**SECTION 6**



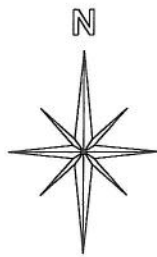
This is a worksheet and is for location purposes only and cannot be guaranteed for accuracy. For more exact information, please CHECK deeds and plats on file in the Putnam County Recorders Office, Ottawa, Ohio.

Revised 2014



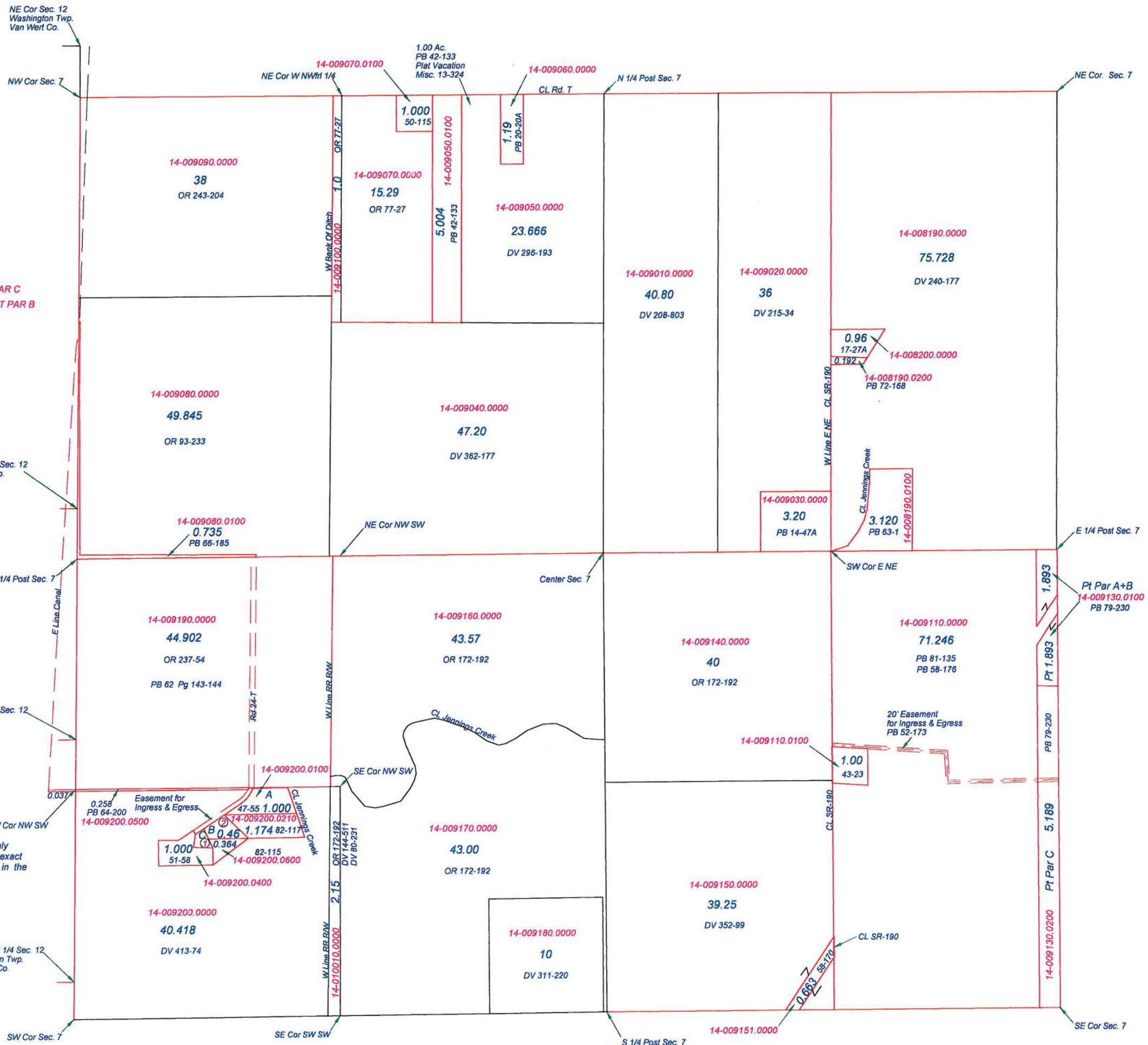
**JENNINGS TOWNSHIP**  
T2S R5E  
SECTION 7

- ① 14-009200.0300 0.176 PB 47-55 PAR C
- ② 14-009200.0200 0.460 PB 47-55 PT PAR B



This is a worksheet and is for location purposes only and cannot be guaranteed for accuracy. For more exact information, please CHECK deeds and plats on file in the Putnam County Recorders Office, Ottawa, Ohio.

Revised 2014



SW Cor Sec. 7

SE Cor SW SW

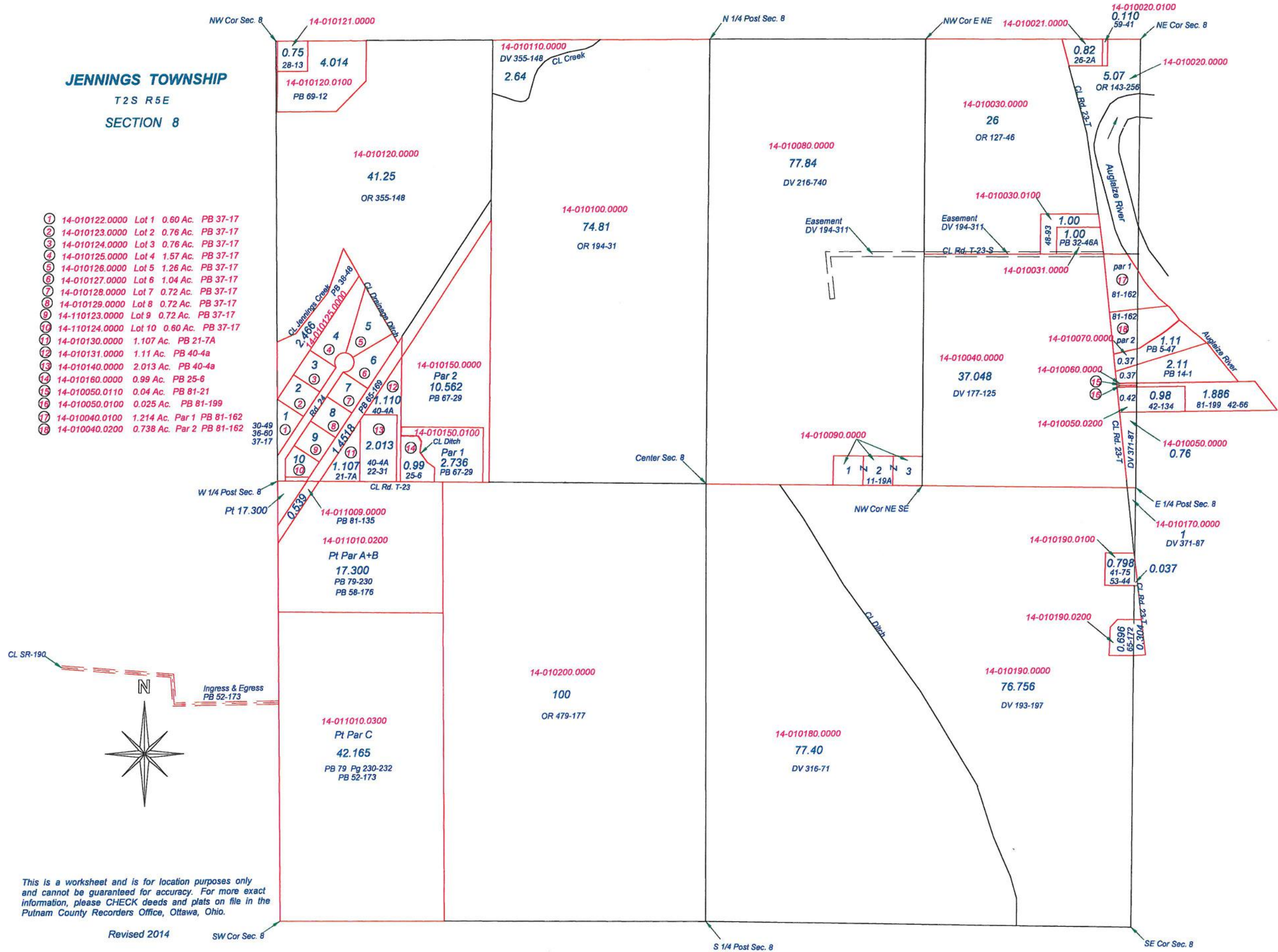
S 1/4 Post Sec. 7

14-009151.0000

SE Cor Sec. 7

**JENNINGS TOWNSHIP**  
T2S R5E  
SECTION 8

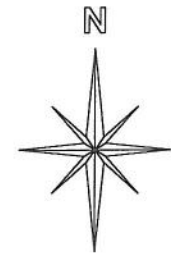
- ① 14-010122.0000 Lot 1 0.60 Ac. PB 37-17
- ② 14-010123.0000 Lot 2 0.76 Ac. PB 37-17
- ③ 14-010124.0000 Lot 3 0.76 Ac. PB 37-17
- ④ 14-010125.0000 Lot 4 1.57 Ac. PB 37-17
- ⑤ 14-010126.0000 Lot 5 1.26 Ac. PB 37-17
- ⑥ 14-010127.0000 Lot 6 1.04 Ac. PB 37-17
- ⑦ 14-010128.0000 Lot 7 0.72 Ac. PB 37-17
- ⑧ 14-010129.0000 Lot 8 0.72 Ac. PB 37-17
- ⑨ 14-110123.0000 Lot 9 0.72 Ac. PB 37-17
- ⑩ 14-110124.0000 Lot 10 0.60 Ac. PB 37-17
- ⑪ 14-010130.0000 1.107 Ac. PB 21-7A
- ⑫ 14-010131.0000 1.11 Ac. PB 40-4a
- ⑬ 14-010140.0000 2.013 Ac. PB 40-4a
- ⑭ 14-010160.0000 0.99 Ac. PB 25-6
- ⑮ 14-010050.0110 0.04 Ac. PB 81-21
- ⑯ 14-010050.0100 0.025 Ac. PB 81-199
- ⑰ 14-010040.0100 1.214 Ac. Par 1 PB 81-162
- ⑱ 14-010040.0200 0.738 Ac. Par 2 PB 81-162



This is a worksheet and is for location purposes only and cannot be guaranteed for accuracy. For more exact information, please CHECK deeds and plats on file in the Putnam County Recorders Office, Ottawa, Ohio.

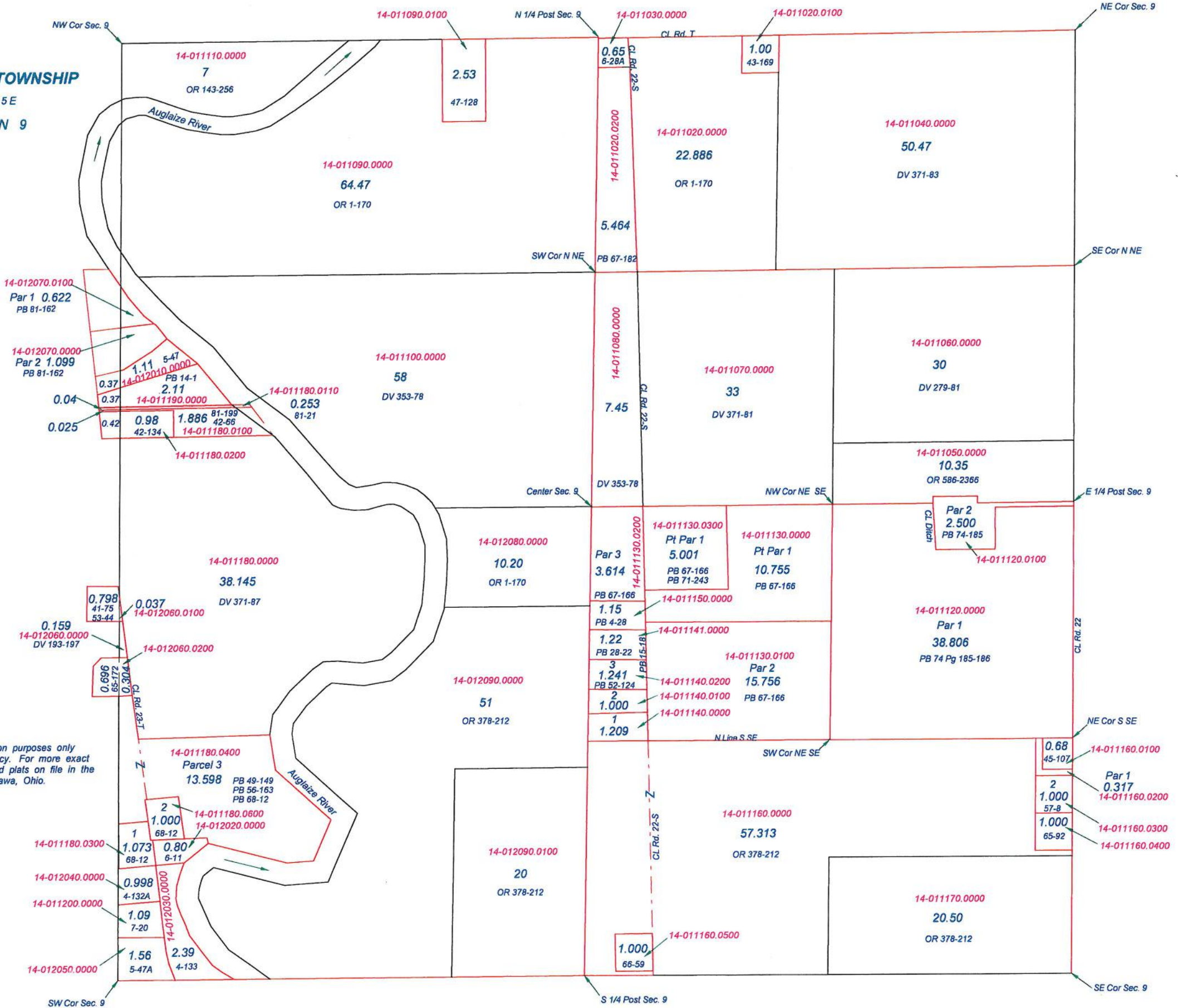
Revised 2014

JENNINGS TOWNSHIP  
T2S R5E  
SECTION 9



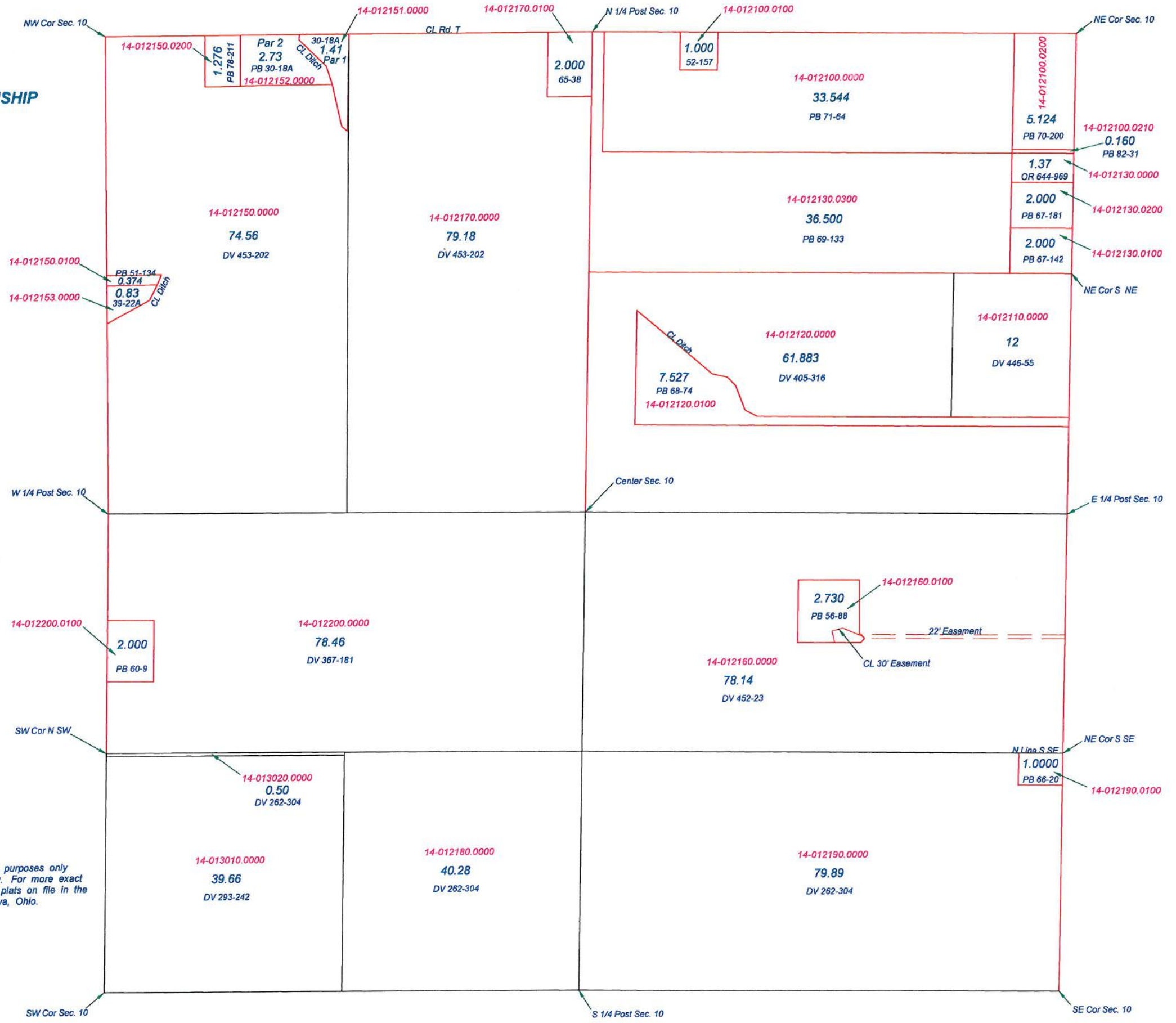
This is a worksheet and is for location purposes only and cannot be guaranteed for accuracy. For more exact information, please CHECK deeds and plats on file in the Putnam County Records Office, Ottawa, Ohio.

Revised 2014



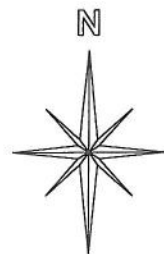
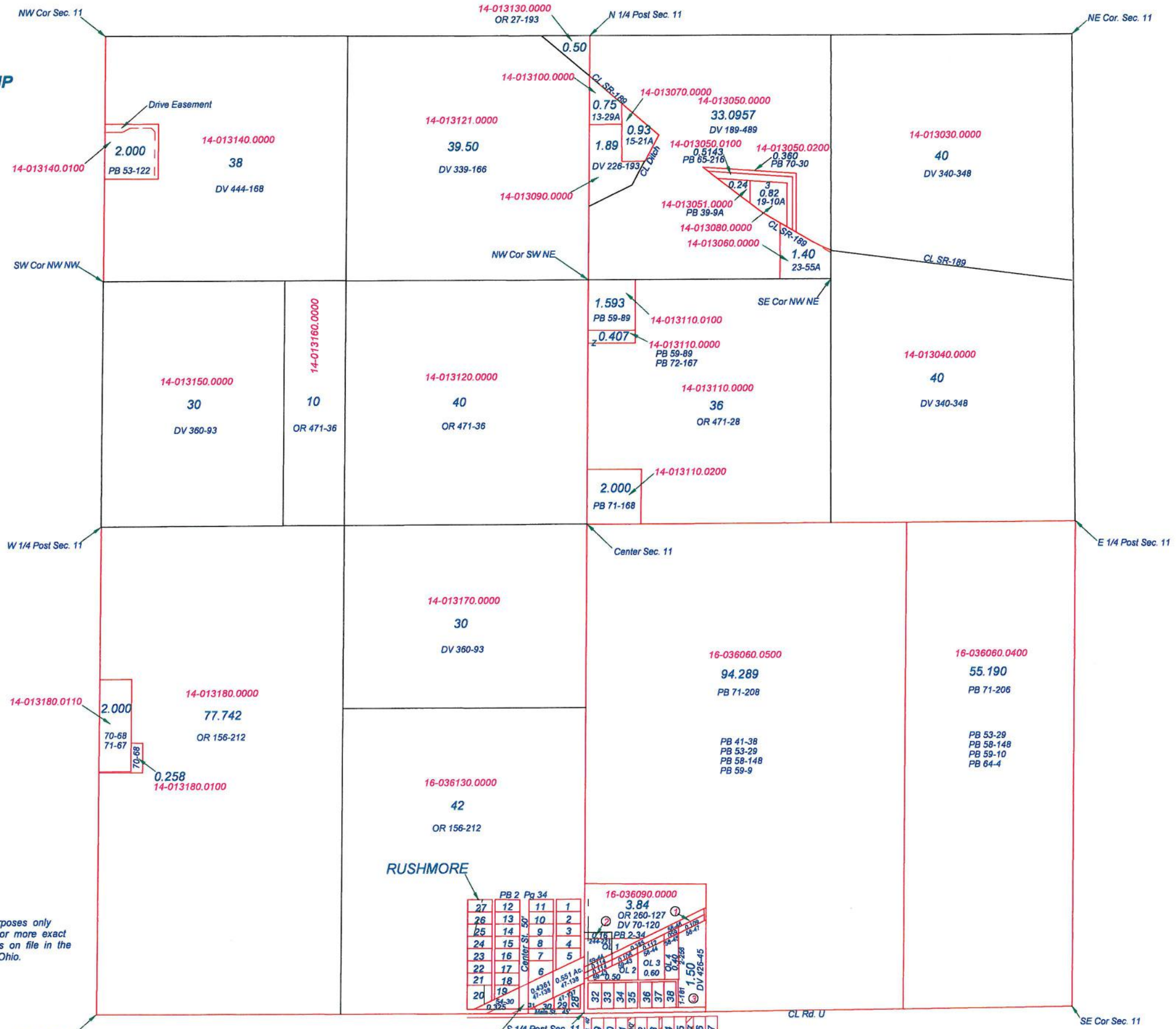


**JENNINGS TOWNSHIP**  
T2S R5E  
SECTION 10



This is a worksheet and is for location purposes only and cannot be guaranteed for accuracy. For more exact information, please CHECK deeds and plats on file in the Putnam County Recorders Office, Ottawa, Ohio.  
Revised 2014

**JENNINGS TOWNSHIP**  
T 2 S R 5 E  
SECTION 11



This is a worksheet and is for location purposes only and cannot be guaranteed for accuracy. For more exact information, please CHECK deeds and plats on file in the Putnam County Recorders Office, Ottawa, Ohio.

Revised 2012

- 1 16-036091.0000 0.385 Ac. PB 58-46
- 2 16-036100.0000 0.16 Ac. DV 244-221
- 3 16-036110.0000 1.50 Ac. DV 426-45

**RUSHMORE**

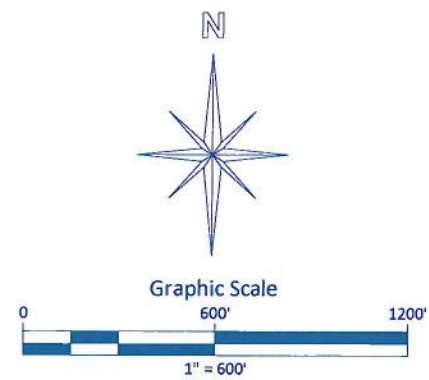
27	12	11	1
26	13	10	2
25	14	9	3
24	15	8	4
23	16	7	5
22	17	6	
21	18		
20	19		

0.2289 Ac. PB 49-56 Roadway Dedication DV 395-94

39	40	41	42	43	44	45	46	47
55	52	51	48					
54	53	50	49					

PB 2 Pg 272 PB 1 Pg 186

JENNINGS TOWNSHIP  
T2S R5E  
SECTION 12



This is a worksheet and is for location purposes only and cannot be guaranteed for accuracy. For more exact information, please CHECK deeds and plats on file in the Putnam County Recorders Office, Ottawa, Ohio.

Revised 2015

