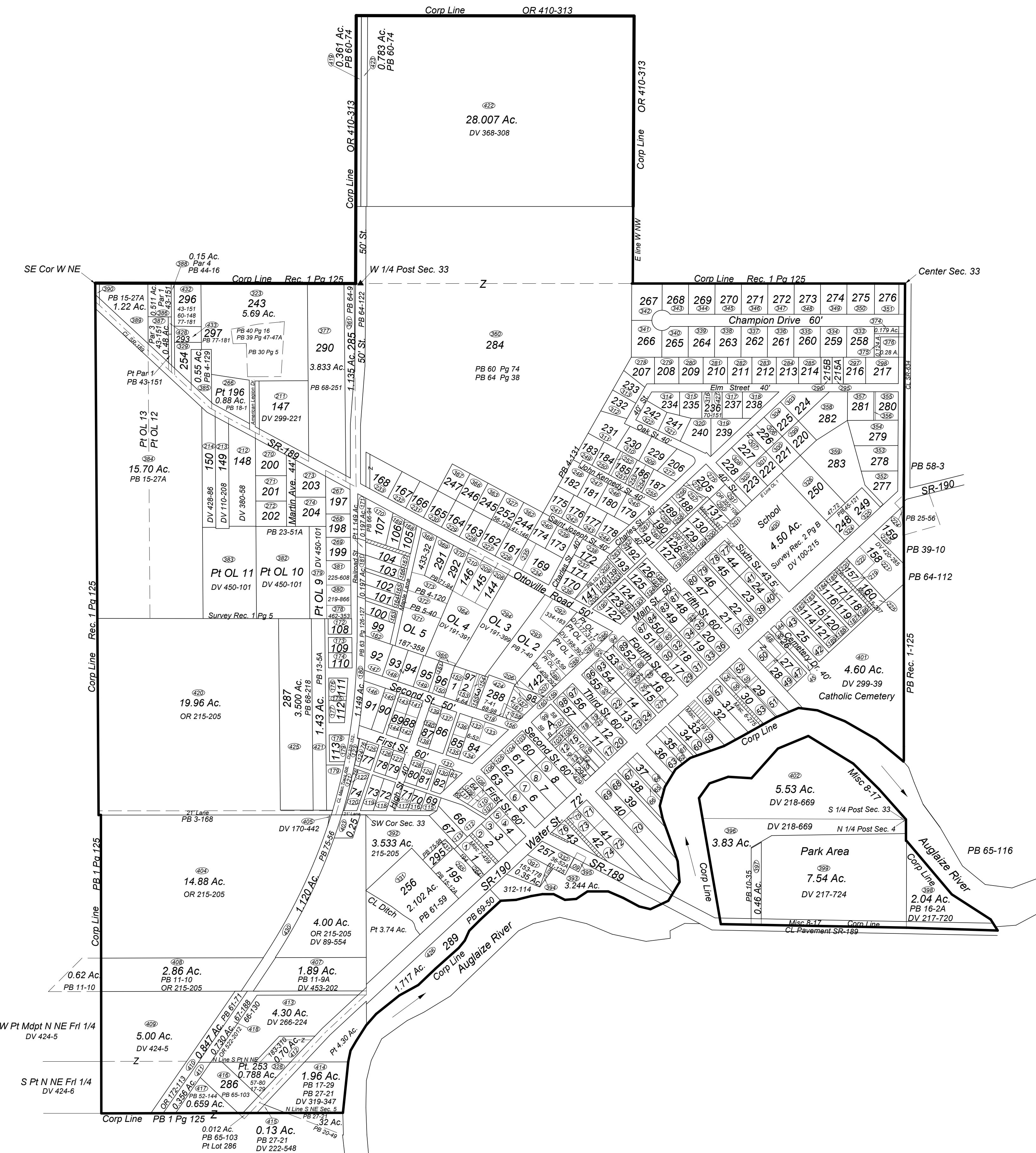


FT. JENNINGS, OHIO



Plat Book Index

LOT NO.	SUBDIVISION NAME	PB	PG
1-43	Original Town	1-Rec	121
1-67	Resurvey	1-Rec	122
OL 1-8	Boehmers Add	1-Rec	123
68-89	A. Boehmers Add	1-Rec	124
68-88	A. Boehmers Add Slide No. 95-96	1-Rec	125
---	Incorporation	1-Rec	126
---	Incorporation Slide No. 129 & 131-132	1-Rec	127
99-107	Lechtengers Add	1-Rec	128
99-107	Lechtengers Add Slide 136-137	1-Rec	129
108-113	A. Boehmers 2nd Add	1-Rec	130
108-113	A. Boehmers 2nd Add Slide 161-162	1-Rec	131
OL 9-13	Section 32 Resurvey Survey Record 1-5	SR	1
21-24 44-45	School Survey	SR	2
41-43	SW Pl Lot 43	SR	2
150	NW Cor SE Pl NE Pl NW Pl 1/4 Sec 4	SR	2
122-141	Resurvey of Raabes 1st Addition	1-Rec	193
142-143	Detachment - SE Pl NE 1/4 NW 1/4 Sec 4	1-Rec	208
159	Vacation Plat	Misc	7
97	Parcel 1-3 Pl Lot 97	3	168
OL 5	NE Cor S Pl OL 5	4	83
10	SW Cor S Pl OL 5	4	106
OL 5	SW Pl OL 5	4	120
OL 8	Pl SE Cor OL 8	4	126
OL 11-12	Pl OL 11-12	4	129
OL 3-4	Property Line Agreement Between OL 3 & OL 4	4	131
161-168	S Pl OL 4-6 North of Ottaville Rd	4	134
OL 5	S Mtd Pl OL 5	5	40
84	Pl SE End Lot 98 Par 1-2	6	37
84	Pl Lot 84	6	52
58-59	NW End Lots 58-59	7	9
98	NE Cor Lot 98 & SW Pl Lot 142	7	28
OL 2	Hoerstner Plg Pl OL 2	7	40
153-155	Pl Lot 98	7	41
169	Platting Plg Pl OL 3	9	33
11	Inlot 11	9	34
138	Menke Plg Pl Lot 138	10	6
139-141	Menke Plg Pl Lots 139-141	10	7
170-193	Menke Subdiv Pl Lots 170-193 & OL 2-3	10	25
200-204	Menke Subdiv Pl OL 1-3	10	35
---	Pl SE Cor N Pl N 1/2 NE 1/4 Sec 5 1.89 Ac.	11	94
---	Pl SE Cor N Pl N 1/2 NE 1/4 Sec 5 3.48 Ac.	11	10
64	Mdpt Inlot 64	12	42
---	Menke Plg Pl SE 1/4 Sec 32 1.43 Ac.	12	44
194-195	Pl NW Pl 1/4 Sec 4	12	124
OL 12-13	Pl OL 12 & 13	15	27A
---	W Pl W Pl N Pl NE Pl NE 1/4 Sec 4 2.04 Ac.	17	29
---	Pl Sec 5 3.32 Ac. 2.09 Ac.	17	29
197-199	Suever Subdiv Pl OL 9	20	51
OL 9-10	Suever 2nd Plg Pl OL 9-10 2.91 Ac.	23	51A
200-204	Swick Subdiv Pl OL 9-10	24	6-6A
205	Menke Platting Pl OL 1-3 & Pl Lot 132	24	18A
---	Pl Nmdpt NW Pl NE 1/4 Sec 4 0.09 Ac.	25	30
206	Menke Platting Pl OL 1-3	25	31A
207-242	Menke Subdiv OL 1-3	25	42
159	Pl Lot 159 0.06 Ac.	25	56
---	Weiging Plg Pl NE 1/4 Sec 5 0.13 Ac. 32 Ac.	27	21
243	Pl OL 10-11 & Pl Lot 196 1.19 Ac. & Easmt	30	5-5A
156	Pl Lot 156 & Pl Sec 4 0.37 Ac.	36	52A
9 58-59	Pl Intols 9 & 58-59	39	5
243	Pl OL 10-11 & Pl Lot 196 5.69 Ac.	39	47
243	Pl OL 10-11 & Pl Lot 196 5.69 Ac.	40	16
98	Pl Intol 98	40	21A-22
244	Lauf Plg Pl OL 4	41	148
245-247	Lauf Plg Pl OL 4-5	42	152
OL 12	Pl R/W SR-189 0.02 Ac.	43	108
OL 12	Par 1-3 Pl OL 12 & Easment	43	151
OL 12	Par 4 Pl OL 12 & Easment	44	16
155	Pl Lot 155 0.023 Ac.	45	54

Plat Book Index

LOT NO.	SUBDIVISION NAME	PB	PG
248-250	Gasser 2nd Plg Pl Emdpt SW Sec 33 0.71 Ac.	45	72
157	Pl Intol 157 & Pl Vacated Alley 0.176 Ac.	47	74
15-16	Weiging Plg Pl of Lots 15 & 16	51	172
---	Pl E 1/2 NE 1/4 Sec 5 1.552 Ac.	52	144
15-16	Pl of Lots 15 & 16	53	101
58-59	Par 4-8 Pl NW Pl Lots 58-59	53	121
213-217	Gasser Replat of Lots 213-217 SW Sec 33	54	154
12	Pl of Intol 12 0.0333 Ac.	55	56
252	Gasser Plat Pl OL 4	56	129
253	Pl E 1/2 NE 1/4 Sec 5	57	80
---	Pl St. Louis & Western RR Sec 32-33 1.201 Ac.	60	74
OL 8	Pl OL 8 0.124 Ac.	61	53
254-255	Pl OL 12 & Easment	60	148
256	Pl NW Pl 1/4 Sec 4 2.102 Ac.	61	59
---	Pl RR RR NE 1/4 Sec 5 0.847 Ac.	61	71
257	Pl NW 1/4 Sec 4 Lot 257 & 0.038 Ac.	61	125
258-276	Pl OL 8	61	152
215A-215B	Pl E 1/2 & W 1/2 Lot 215	61	158
---	Pl St. Louis & Western RR 1.543 Ac.	63	126-127
---	Pl St. Louis & Western RR 0.197 Ac.	63	178-179
---	Pl Sec 32 & 33 40.00 Ac. Pl Jennings School	64	9
277-283	Replat of Lots 277-283 & Pl Emdpt SW Sec 33	64	63
284-285	Street Dedication with Easements	64	122-123
188	Pl Lot 188 0.0136 Ac.	65	52
205	Pl Lot 205 0.0136 Ac.	65	53
286	Pl Lot 286 & Pl E 1/2 NE 1/4 Sec 5 & Easmt	65	103
---	Pl St. Louis & Western RR Sec 32-33 0.197 Ac.	66	94-95
---	Pl RR RR NE 1/4 Sec 5 0.847 Ac.	66	100
---	Western Pl Lot 280 0.0257 Ac.	66	160
---	Pl NE 1/4 Sec 5 0.730 Ac.	67	188
288	Pl SW 1/4 Sec 33 All of Lots 153-155 0.516 Ac.	68	98
287	Pl SE 1/4 Sec 32 3.500 Ac.	68	219
290	Pl SE 1/4 Sec 32 3.853 Ac.	68	251
289	Pl NW Pl 1/4 Sec 4 1.717 Ac.	69	50
---	E 1/2 & W 1/2 Lot 286	70	151
291-292	Replat of Pl OL 3	71	94
293	Pl Parcel 1 PB 43 Pg 151 0.029 Ac.	73	36
71	Encroachment Easement 0.020 Ac. Pl High St. Ad Intol 71	73	163-164
294	Pl Lot 9 0.074 Ac.	73	201
---	Former RR RR NE 1/4 Sec 5 1.120 Ac.	75	56
---	Pl NW 1/4 Sec 4 0.207 Ac.	75	98
296-297	Replat of Intol 255	77	181

Parcel Location

Parcel No.	Parcel Numbers	Parcel No.	Parcel Numbers	Parcel No.	Parcel Numbers			
17-04010.0000	Intol 1 Misc 7-459	146	17-051070.0000	Intol 5 Ex RR	286	17-057051.0100	Intol 215B	PB 61-158
17-04020.0000	Intol 1 Misc 7-459	147	17-051080.0000	Intol 5 Ex RR	287	17-057052.0000	Intol 215C	PB 61-159
17-04030.0000	Intol 1 Misc 7-459	148	17-051090.0000	Intol 5 Ex RR	288	17-057053.0000	Intol 217	PB 54-154
17-04040.0000	Intol 1 Misc 7-459	149	17-051100.0000	Intol 5 Ex RR	289	17-057054.0000	Intol 218	PB 54-155
17-04050.0000	Intol 1 Misc 7-459	150	17-051110.0000	Intol 5 Ex RR	290	17-057055.0000	Intol 219	PB 54-156
17-04060.0000	Intol 1 Misc 7-459	151	17-051120.0000	Intol 5 Ex RR	291	17-057056.0000	Intol 220	PB 54-157
17-04070.0000	Intol 1 Misc 7-459	152	17-051130.0000	Intol 5 Ex RR	292	17-057057.0000	Intol 221	PB 54-158
17-04080.0000	Intol 1 Misc 7-459	153	17-051140.0000	Intol 5 Ex RR	293	17-057058.0000	Intol 222	PB 54-159
17-04090.0000	Intol 1 Misc 7-459	154	17-051150.0000	Intol 5 Ex RR	294	17-057059.0000	Intol 223	PB 54-160
17-04100.0000	Intol 1 Misc 7-459	155	17-051160.0000	Intol 5 Ex RR	295	17-057060.0000	Intol 224	PB 54-161
17-04110.0000	Intol 1 Misc 7-459	156	17-051170.0000	Intol 5 Ex RR	296	17-057061.0000	Intol 225	PB 54-162
17-04120.0000	Intol 1 Misc 7-459	157	17-051180.0000	Intol 5 Ex RR	297	17-057062.0000	Intol 226	PB 54-163
17-04130.0000	Intol 1 Misc 7-459	158	17-051190.0000	Intol 5 Ex RR	298	17-057063.0000	Intol 227	PB 54-164
17-04140.0000	Intol 1 Misc 7-459	159	17-051200.0000	Intol 5 Ex RR	299	17-057064.0000	Intol 228	PB 54-165
17-04150.0000	Intol 1 Misc 7-459	160	17-051210.0000	Intol 5 Ex RR	300	17-057065.0000	Intol 229	PB 54-166
17-04160.0000	Intol 1 Misc 7-459	161	17-051220.0000	Intol 5 Ex RR	301	17-057066.0000	Intol 230	PB 54-167
17-04170.0000	Intol 1 Misc 7-459	162	17-051230.0000	Intol 5 Ex RR	302	17-057067.0000	Intol 231	PB 54-168
17-04180.0000	Intol 1 Misc 7-459	163	17-051240.0000	Intol 5 Ex RR	303	17-057068.0000	Intol 232	PB 54-169
17-04190.0000	Intol 1 Misc 7-459	164	17-051250.0000	Intol 5 Ex RR	304	17-057069.0000	Intol 233	PB 54-170
17-04200.0000	Intol 1 Misc 7-459	165	17-051260.0000	Intol 5 Ex RR	305	17-057070.0000	Intol 234	PB 54-171
17-04210.0000	Intol 1 Misc 7-459	166	17-051270.0000	Intol 5 Ex RR	306	17-057071.0000	Intol 235	PB 54-172
17-04220.0000	Intol 1 Misc 7-459	167	17-051280.0000	Intol 5 Ex RR	307	17-057072.0000	Intol 236	PB 54-173
17-04230.0000	Intol 1 Misc 7-459	168	17-051290.0000	Intol 5 Ex RR	308	17-057073.0000	Intol 237	PB 54-174
17-04240.0000	Intol 1 Misc 7-459	169	17-051300.0000	Intol 5 Ex RR	309	17-057074.0000	Intol 238	PB 54-175
17-04250.0000	Intol 1 Misc 7-459	170	17-051310.0000	Intol 5 Ex RR	310	17-057075.0000	Intol 239	PB 54-176
17-04260.0000	Intol 1 Misc 7-459	171	17-051320.0000	Intol 5 Ex RR	311	17-057076.0000	Intol 240	PB 54-177
17-04270.0000	Intol 1 Misc 7-459	172	17-051330.0000	Intol 5 Ex RR	312	17-057077.0000	Intol 241	PB 54-178
17-04280.0000	Intol 1 Misc 7-459	173	17-051340.0000	Intol 5 Ex RR	313	17-057078.0000	Intol 242	PB 54-179
17-04290.0000	Intol 1 Misc 7-459	174	17-051350.0000	Intol 5 Ex RR	314	17-057079.0000	Intol 243	PB 54-180
17-04300.0000	Intol 1 Misc 7-459	175	17-051360.0000	Intol 5 Ex RR	315	17-057080.0000	Intol 244	PB 54-181
17-04310.0000	Intol 1 Misc 7-459	176	17-051370.0000	Intol 5 Ex RR	316	17-057081.0000	Intol 245	PB 54-182
17-04320.0000	Intol 1 Misc 7-459	177	17-051380.0000	Intol 5 Ex RR	317	17-057082.0000	Intol 246	PB 54-183
17-04330.0000	Intol 1 Misc 7-459	178	17-051390.0000	Intol 5 Ex RR	318	17-057083.0000	Intol 247	PB 54-184
17-04340.0000	Intol 1 Misc 7-459	179	17-051400.0000	Intol 5 Ex RR	319	17-057084.0000	Intol 248	PB 54-185
17-04350.0000	Intol 1 Misc 7-459	180	17-051410.0000	Intol 5 Ex RR	320	17-057085.0000	Intol 249	PB 54-186
17-04360.0000	Intol 1 Misc 7-459	181	17-051420.0000	Intol 5 Ex RR	321	17-057086.0000	Intol 250	PB 54-187
17-04370.0000	Intol 1 Misc 7-459	182	17-051430.0000	Intol 5 Ex RR	322	17-057087.0000	Intol 251	PB 54-188
17-04380.0000	Intol 1 Misc 7-459	183	17-051440.0000	Intol 5 Ex RR	323	17-057088.0000	Intol 252	PB 54-189
17-04390.0000	Intol 1 Misc 7-459	184	17-051450.0000	Intol 5 Ex RR	324	17-057089.0000	Intol 253	PB 54-190
17-04400.0000	Intol 1 Misc 7-459	185	17-051460.0000	Intol 5 Ex RR	325	17-057090.0000	Intol 254	PB 54-191
17-04410.0000	Intol 1 Misc 7-459	186	17-051470.0000	Intol 5 Ex RR	326	17-057091.0000	Intol 255	PB 54-192
17-04420.0000	Intol 1 Misc 7-459	187	17-051480.0000	Intol 5 Ex RR	327	17-057092.0000	Intol 256	PB 54-193
17-04430.0000	Intol 1 Misc 7-459	188	17-051490.0000	Intol 5 Ex RR	328	17-057093.0000	Intol 257	PB 54-194
17-04440.0000	Intol 1 Misc 7-459	189	17-051500.0000	Intol 5 Ex RR	329	17-057094.0000	Intol 258	PB 54-195
17-04450.0000	Intol 1 Misc 7-459	190	17-051510.0000	Intol 5 Ex RR	330	17-057095.0000	Intol 259	PB 54-196
17-04460.0000	Intol 1 Misc 7-459	191	17-051520.0000	Intol 5 Ex RR	331	17-057096.0000	Intol 260	PB 54-197
17-04470.0000	Intol 1 Misc 7-459	192	17-051530.0000	Intol 5 Ex RR	332	17-057097.0000	Intol 261	PB 54-198
17-04480.0000	Intol 1 Misc 7-459	193	17-051540.0000	Intol 5 Ex RR	333	17-057098.0000	Intol 262	PB 54-199
17-04490.0000	Intol 1 Misc 7-459	194	17-051550.0000	Intol 5 Ex RR	334	17-057099.0000	Intol 263	PB 54-200
17-04500.0000	Intol 1 Misc 7-459	195	17-051560.0000	Intol 5 Ex RR	335	17-057100.0000	Intol 264	PB 54-201
17-04510.0000	Intol 1 Misc 7-459	196	17-051570.0000	Intol 5 Ex RR	336	17-057101.0000	Intol 265	PB 54-202
17-04520.0000	Intol 1 Misc 7-459	197	17-051580.0000	Intol 5 Ex RR	337	17-057102.0000	Intol 266</	