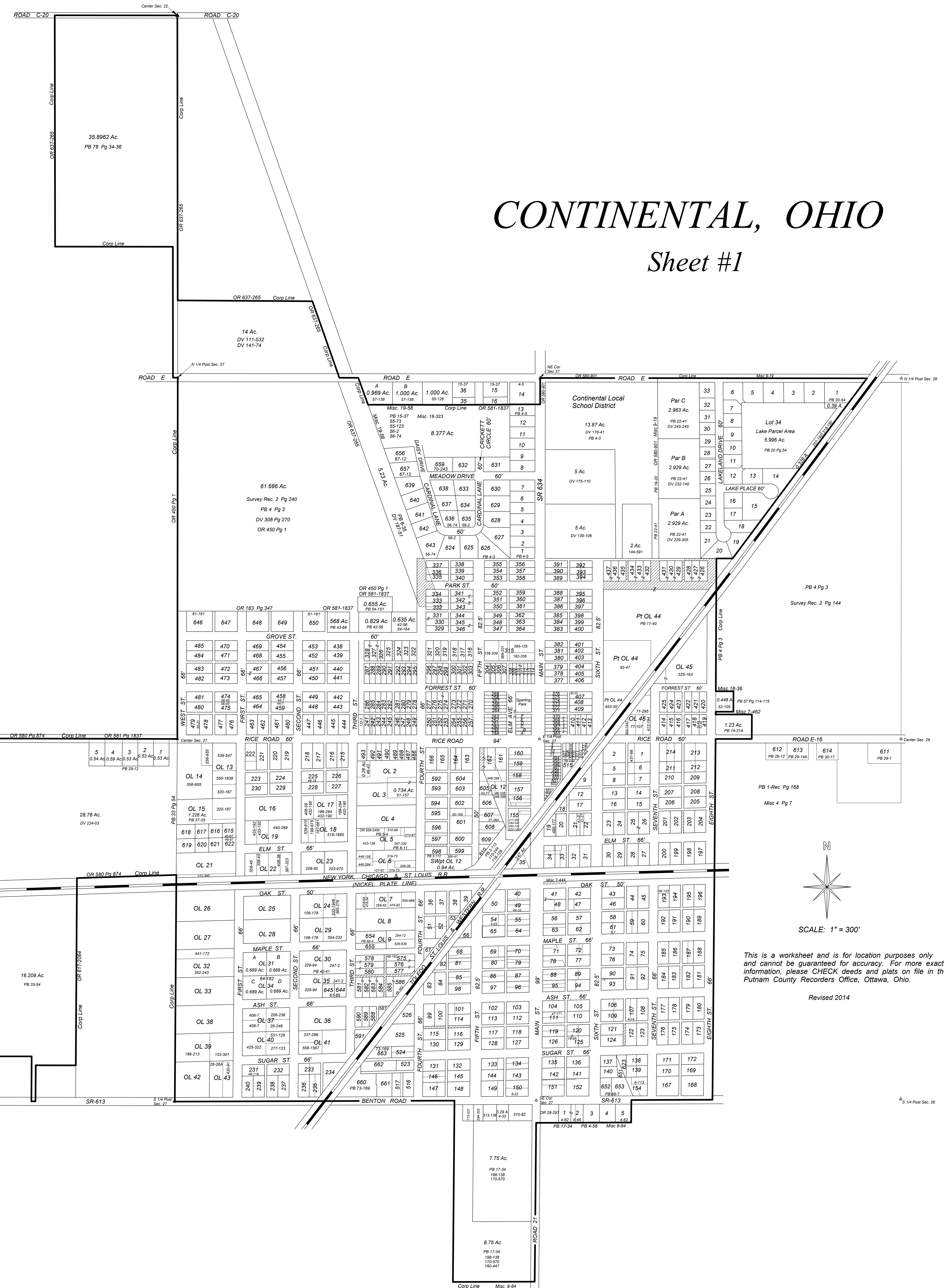


CONTINENTAL, OHIO

Sheet #1

PLAT LEGEND				PLAT LEGEND			
LOT NO.	SUBDIVISION NAME	PB	Pg	LOT NO.	SUBDIVISION NAME	PB	Pg
OL 47-58	Saney's Add. Ept SW 1/4 Sec. 26 (Vacated)	1-Rec.	168	OL 15	Pt OL 15 2.26 Ac.	37	25
516-563	Saney's Add. Ept SW 1/4 Sec. 26 (Vacated)	1-Rec.	168	509	Wolman Ptg Pt Lot 509	38	44
241-314	Map of Continental Old Lots 1-75	1-Rec.	173	509-515	Retracement Survey Lots 509-515	38	44A
438-485	Buckeye Slave Co. 2nd Add.	1-Rec.	176	OL 30 & 35	Survey of OL 30 & 35	40	41
250-303	Part of Sparring Add.	C	2	21-22	E Pt Lot 21 & W Pt Lot 22	41	37
-	Sec. 26 Monroe Twp.	Survey	144	605 & OL 12	Pt Inlot 605 & OL 12	43	77
1-154	NE 1/4 Sec. 27 Monroe Twp.	Survey	240	458-459	Survey of Lots 458-459	44	7
241-314	Map of Continental Old Lots 1-75	2	156	49	Spt Lot 49	44	10
155-166	Buckeye Slave Co. Add.	2	112	615-622	Pt SE 1/4 Sec. 27 & Pt Lot 20	46	67
167-240	A. V. Rices Add.	2	116	575-586	Ref. Survey of Lots 575-586	46	162
OL 7-9 13-43	A. V. Rices Add.	2	116	OL 12	Pt OL 12	46	105
167-214	A. V. Rices Add.	2	122	111	Npt Lot 111	47	171
-	Incorporation	2	134	225 228	Retracement Survey of Inlots 225 & 228	48	19
438-485	Buckeye Slave Co. 2nd Add.	2	204	231 239	Retracement Survey of Inlots 231 & 239	48	118
406-493	Subdivision of OL 1	2	210	OL 2	Homey Plat NW Cor OL 2 0.26 Ac.	49	43
315-437	B. D. Sparring's Add. Lots 76-198 (Old)	2	242	407	Retracement Survey of Inlot 407	50	20
OL 44-46	B. D. Sparring's Add. OL 1-3 (Old)	2	242	479	Retracement Survey of Inlot 479	50	21
3-4 10-11	W.A. Miller's Subdiv.	Survey Rec 2	310	601	Pt Lot 601	50	155
494-515	W.A. Miller's Subdiv.	Survey Rec 2	310	OL 2-3	Homey Plat SE Cor OL 2 & NE Cor OL 3	51	157
516-526	Rices Subdivision of OL 11	2	320	418-419	Lots 418 & 419 Sparring's Add.	52	46
315-437	B. D. Sparring's Add. Lots 76-198 (Old)	3	60	-	Pt NW 1/4 Sec. 26 0.448 Ac.	52	105
OL 44-46	B. D. Sparring's Add. OL 1-3 (Old)	3	60	623	Pt Lots 137-140 & Vac. Alley	54	63
592-610	Platterson's Subdiv. of OL 12	3	112	159	Ept Spt of Inlot 159 0.040 Ac.	55	34
575-591	Prowants Subdiv. of OL 10	3	140	16-35	Wasserman 2nd Subdiv. Vacated Plat	55	73
107	Detachment Territory Pt Sec. 26 & 27	4	3	-	Pt NE 1/4 Sec. 27 21.784 Ac.	55	123
-	Ept Nmidpt NE NE Sec. 34 0.29 Ac.	4	33	624-635	Country Meadows Subdivision Phase I	56	2
-	Groff's Subdiv. Npt NW 1/4 Sec. 35 2.02 Ac.	4	58	474-475	Lots 474-475	56	45
1-5	Npt NW 1/4 Sec. 35	4	62	636-643	Country Meadows Subdivision Phase II	56	74
54	W 115 ft. Lot 54	4	63	193	Npt Inlot 193 0.112 Ac.	56	133
154	NE Cor Lot 154	4	113	844-845	Pt OL 35	61	85
OL 5	NW Cor OL 5	5	4	646-650	Homey Grove Street Add. Pt NE 1/4 Sec. 27	61	161
61	W 1/2 Lot 61 & Ept Lot 61	5	7	651	Pt Inlot No. 137 & 140	62	108
-	Subdiv. Par. 2 Winkler's Subdiv. PB 4-62	5	46	OL 31 & OL 34	Survey of Outlots 31 & 34	64	182-183
332-337	Pt NE 1/4 Sec. 27 & Pt Lots 332-337	6	35	654-655	Pt W 1/2 OL 9	66	4
392-394	E & W Pt Lots 392-394	6	36	652-653	Inlot 153 & Pt Inlot 154 & Pt Vacated Alley	66	7-8
OL 5	SE Cor OL 5	8	11	656-657	Country Meadows Subdiv. Phase III Pt NE 1/4 Sec. 27	67	12-13
150	Spt Lot 150	8	23	659	Country Meadows Subdiv. Phase III B Plat Pt NE 1/4 Sec. 27	70	243-244
-	Shalter Ptg Pt NW 1/4 Sec. 26 1.23 Ac.	14	31A	660-663	Pt Inlots 523 & 524 & All of Inlots 518, 519, 520, 521 & 522	73	189-171
15-36	Wasserman 2nd Subdiv. Pt NE 1/4 Sec. 27	15	37				
-	Annexation Plat NE Cor Sec. 34 & NW Cor Sec. 35	17	34				
426-437 OL 44	Lots 426-437 & Pt OL 44	17	40-40A				
120 & 125	Pt Inlots 120 & 125	19	3A				
1-34	Lakeview Estates NW 1/4 Sec. 26	20	54				
A-B-C	Pt W NW Sec. 26	22	41				
OL 43	Pt OL 43	26	26A				
607	S 1/2 of Lot 607	27	26A				



This is a worksheet and is for location purposes only and cannot be guaranteed for accuracy. For more exact information, please CHECK deeds and plats on file in the Putnam County Recorder's Office, Ottawa, Ohio.

Revised 2014