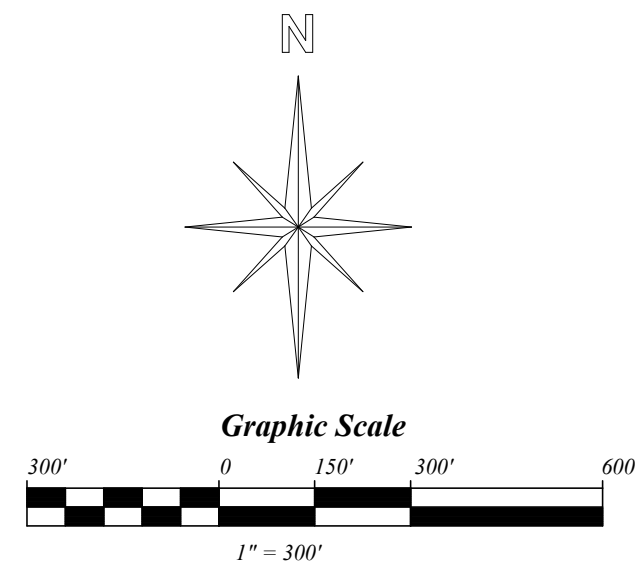


CLOVERDALE, OHIO

Center Sec. 20



This is a worksheet and is for location purposes only and cannot be guaranteed for accuracy. For more exact information, please CHECK deeds and plats on file in the Putnam County Recorders Office, Ottawa, Ohio.

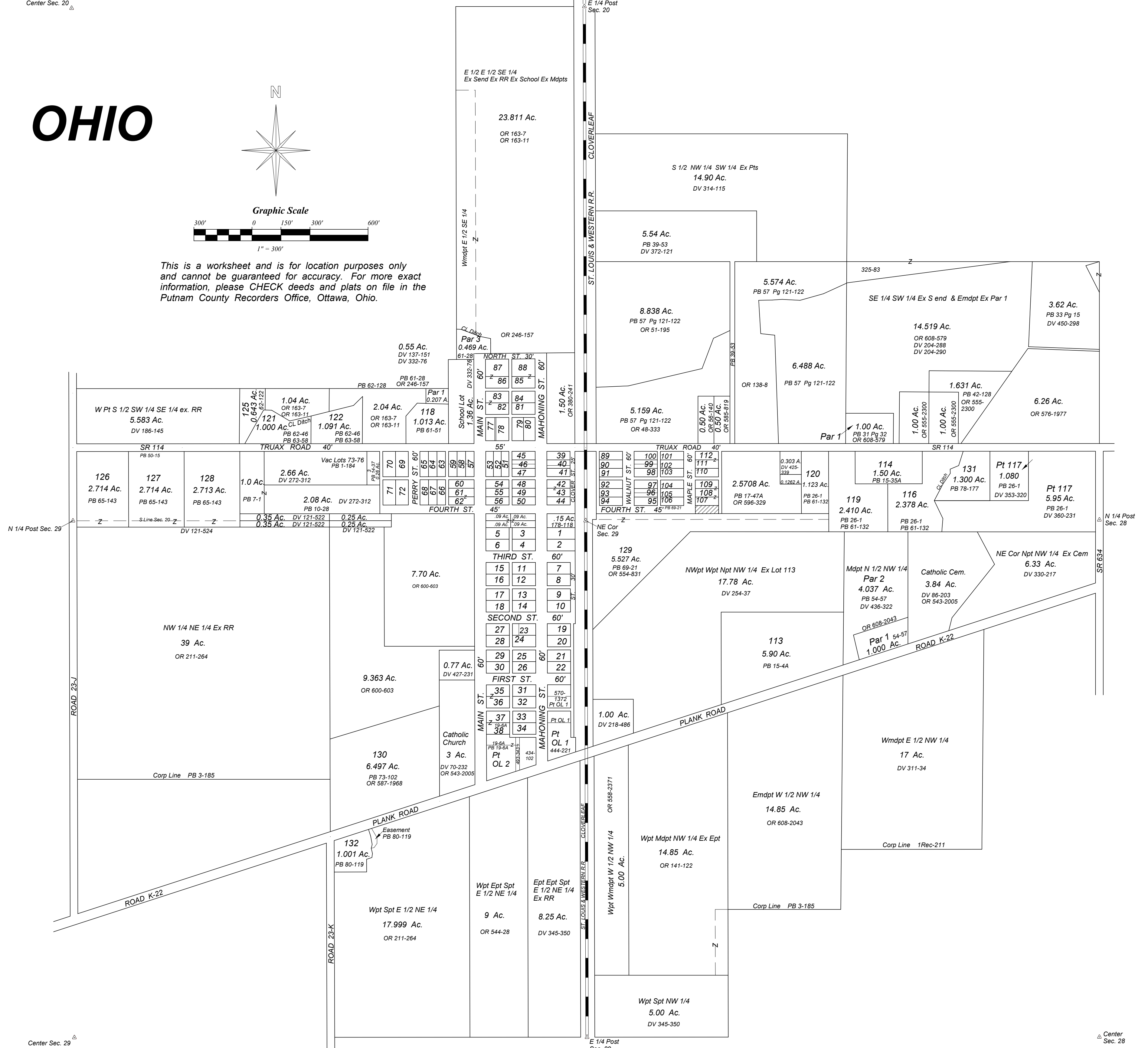
PLAT LEGEND

LOT NO.	SUBDIVISION NAME	PB	PG
1-72	OL 1-2 Village of Cloverdale	1Rec 2	184 286
77-88	C.F. Wannemacher's Add.	1Rec	190
89-112	John Heitzman's Add.	1Rec	196
—	Weber's & Brokamp's Addn. Pt NW 1/4 Sec. 28	1Rec	211
—	Incorporation	3	185
—	Scharf Ptlg Pt SE Cor SW 1/4 SE 1/4 Sec. 20 1.0 Ac.	7	1
—	Scharf 2nd Ptlg Pt SE 1/4 Sec. 20 2.08 Ac.	10	28
—	Scharf 3rd Ptlg Pt SE 1/4 SE 1/4 Sec. 20 0.26 Ac.	14	37
113	Horstman Ptlg Pt Npt NW Sec. 28 5.90 Ac.	15	4A
114	Matson Ptlg Pt S end SE SW Sec. 21	15	35A
—	Matson Ptlg Pt S end W 1/2 SW 1/4 Sec. 21 3.00 Ac.	17	47A
37-38	OL 2 Lots 37-38 & Pt OL 2	19	6A
115-117	Pt SW Sec. 21 & Pt NW Sec. 28	26	1
—	Par 1 Pt SW 1/4 Sec. 21 1.00 Ac.	31	32
—	Pt S 1/2 Sec. 21 7.22 Ac.	33	15-15A
—	Pt S 1/2 NW SW Sec. 21 5.54 Ac.	39	53
—	Pt SW 1/4 Sec. 21 1.631 Ac.	42	128
—	Centerline Survey SR 114 Sec. 20	50	15
24	Plat of Lot 24	50	48
1-2	Mdpt N 1/2 NW 1/4 Sec. 28	54	57
—	Pt SW 1/4 SW 1/4 Sec. 21 Ac.	57	121
1-3	Par 1-3 Pt SE 1/4 Sec. 20	61	28
118	Pt SE 1/4 Sec. 20 1.013 Ac.	61	51
116 119-120	Pt Lots 115-116	61	132
121-122	Pt SE 1/4 Sec. 20	62	46-47
125	Pt SE 1/4 Sec. 20 0.864 Ac.	62	122
121-122	Pt SE 1/4 Sec. 20	63	58-59
126-128	Pt SE 1/4 Sec. 20 & Pt NE 1/4 Sec. 29	65	143
95-106 129	Pt SW 1/4 Sec. 21 & Pt NW 1/4 Sec. 28	69	21-22
130	Pt Npt Ept NE 1/4 Sec. 29 6.497 Ac.	73	102-103
131	Pt SW 1/4 Sec. 21 1.300 Ac.	78	177-178
132	Pt Spt Ept NE 1/4 Sec. 29 1.001 Ac. & Easement	80	119-120

Revised 2013

N 1/4 Post Sec. 29

Center Sec. 29



E 1/4 Post Sec. 29

Center Sec. 28