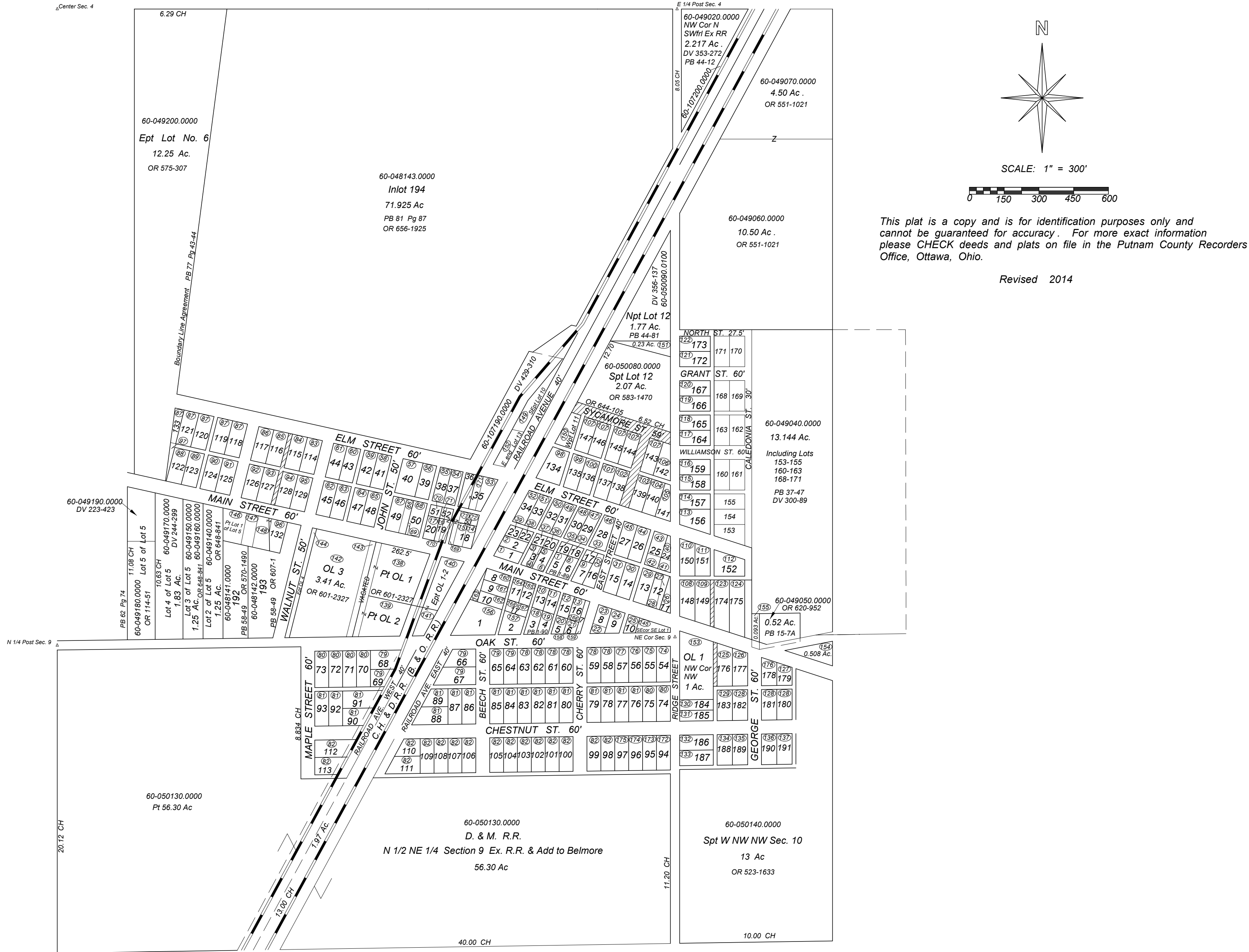


BELMORE, OHIO



Plat Legend			Parcel Location		Parcel Location		Parcel Location	
Lot No.	Subdivision Name	PB Pg	Circled No.	Parcel No.	Circled No.	Parcel No.	Circled No.	Parcel No.
1-20	Belmore	1 Rec 89	1	60-041910.0000 Inlet 1 PB 1-89 CR 583-1470	86	60-045170.0000 Inlet 117 PB 1-84 DV 438-1	162	60-107050.0000 Inlet 10 DV 162-73
1-53	Knave & Speakers Addl	1 Rec 90	2	60-041920.0000 Inlet 2 PB 1-89 CR 583-1470	87	60-045180.0000 Inlet 118 PB 1-84 CR 586-1825	163	60-107060.0000 3rd Blk E. 1/2 S. 1/4 Sec. 10 DV 163-73
-	Incorporation	1 Rec 91	3	60-041930.0000 Inlet 3 Wht PB 1-89 CR 583-1470	88	60-045190.0000 Inlet 119 PB 1-84 CR 586-1108	164	60-107070.0000 Inlet 11 DV 187-442
OL 1-13	Knave & Speakers 2nd Addl	1 Rec 92	4	60-041940.0000 Inlet 4 Mhst PB 1-89 CR 647-713	89	60-045200.0000 Inlet 120 PB 1-84 CR 647-1632	165	60-107080.0000 Inlet 12 DV 45-288
54-113	D. & M. R. Addition	1 Rec 93	5	60-041950.0000 Inlet 5 Ept PB 1-89 CR 647-713	90	60-045210.0000 Inlet 121 PB 1-84 CR 647-1632	166	60-107090.0000 Inlet 13 DV 45-288
114-147	Knave's Addition	1 Rec 94	6	60-041960.0000 Inlet 6 PB 1-89 CR 647-713	91	60-045220.0000 Inlet 122 PB 1-84 CR 647-2101	167	60-107100.0000 Inlet 14 DV 45-288
176-191	Georges Addition	1 Rec 95	7	60-041970.0000 Inlet 7 PB 1-89 CR 621-1220	92	60-045230.0000 Inlet 123 PB 1-84 CR 647-2101	168	60-107110.0000 Inlet 15 DV 259-43
148-173	Williamson's Addition	1 Rec 96	8	60-041980.0000 Inlet 8 PB 1-89 CR 621-1220	93	60-045240.0000 Inlet 124 PB 1-84 CR 647-2101	169	60-107120.0000 Inlet 16 DV 429-310
OL 1-13	Knave & Speakers	2 Rec 97	9	60-041990.0000 Inlet 9 PB 1-89 CR 621-1220	94	60-045250.0000 Inlet 125 PB 1-84 CR 647-2101	170	60-107130.0000 Inlet 17 DV 429-310
-	Incorporation	3 Rec 98	10	60-042000.0000 Inlet 10 PB 1-89 CR 621-1220	95	60-045260.0000 Inlet 126 PB 1-84 CR 647-2101	171	60-107140.0000 Inlet 18 DV 429-310
153-171	George Pigg Pt Ept W SW Sec. 3 & Pt NW Sec. 10	1 Rec 99	11	60-042010.0000 Inlet 11 Ept PB 1-89 CR 621-1220	96	60-045270.0000 Inlet 127 PB 1-84 CR 647-2101	172	60-107150.0000 Inlet 19 DV 429-310
12	Pt SW Sec. 3 & N NW Sec. 10	4 Rec 100	12	60-042020.0000 Inlet 12 Ept PB 1-89 CR 621-1220	97	60-045280.0000 Inlet 128 PB 1-84 CR 647-2101	173	60-107160.0000 Inlet 20 DV 429-310
192-193	Anguiano Pigg Pt Lot 12 1.77 Ac.	4 Rec 101	13	60-042030.0000 Inlet 13 Ept PB 1-89 CR 621-1220	98	60-045290.0000 Inlet 129 PB 1-84 CR 647-2101	174	60-107170.0000 Inlet 21 DV 429-310
194	Boundary Line Agreement Pt SE Sec. 4	7 Rec 102	14	60-042040.0000 Inlet 14 Ept PB 1-89 CR 621-1220	99	60-045300.0000 Inlet 130 PB 1-84 CR 647-2101	175	60-107180.0000 Inlet 22 DV 429-310
-	Alley & Street Vacations	OR 644 105	15	60-042050.0000 Inlet 15 Ept PB 1-89 CR 621-1220	100	60-045310.0000 Inlet 131 PB 1-84 CR 647-2101	176	60-107190.0000 Inlet 23 DV 429-310